

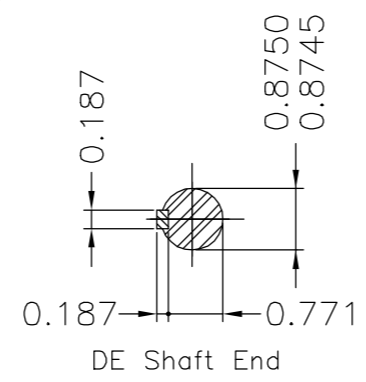
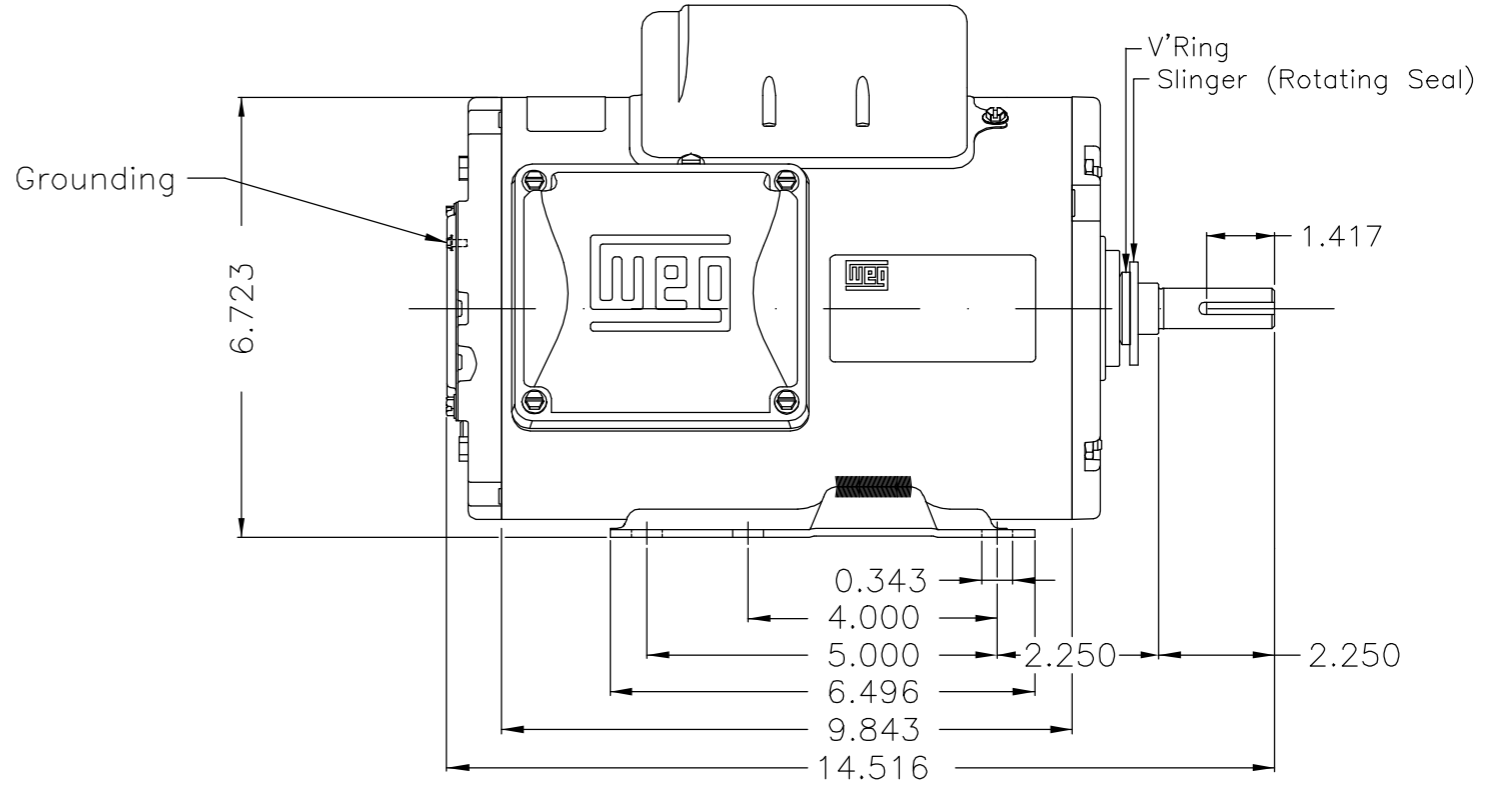
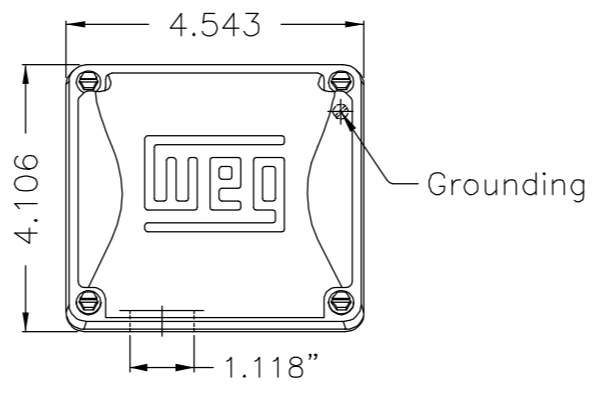
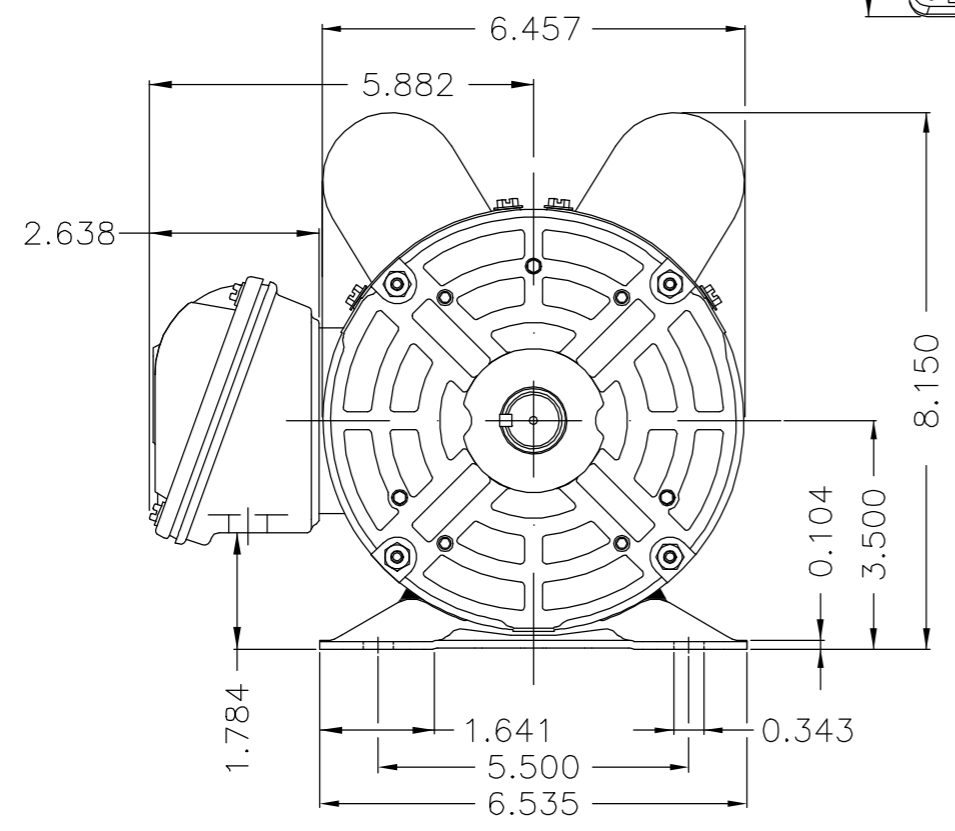
EJE/SHAFT	
ESTÁNDAR/STANDARD	X
OPCIONAL/OPTIONAL	
ESPECIAL/SPECIAL	

Dimensiones en pulgadas
Dimensions in inches

PRELIMINARY DOCUMENT
Not to be used for installation purposes.

THIS IS AN UPDATED REVISION, THE PREVIOUS ONE MUST BE DISREGARDED.

A
B
C
D
E



Refuerzo de soldadura en el pie / Weld reinforcement on the foot
 Material del eje - SAE/ABNT 1040/45 / Shaft material - SAE/ABNT 1040/45
 Ambos sentidos de rotacion / Rotation CW and CCW
 Protector térmico fenólico ? Automático / Phenolic thermal protector - automatic
 Color Munsell N 1 negro mate / Color Munsell N 1 matte black
 Plan de pintura 207N / Painting plan 207N
 Forma constructiva F-1/B3R(D) / Mounting F-1/B3R(D)

WEG ELECTRIC CORPORATION - WEC

OV: 21298585

500001823202	NEW DOCUMENT	HERNANDEZA	PNAVA	PNAVA	23.09.2020	00		
ECM	LOC	SUMMARY OF MODIFICATIONS		EXECUTED	CHECKED	RELEASED	DATE	VER
EXECUTED	HERNANDEZA	SINGLE PHASE MOTOR CLOSED ROLLED STEEL FRAME 143/5T IP55 TEAO		10007958591				
CHECKED	PNAVA			000	00			
RELEASED	PNAVA							
REL DT	23.09.2020	WMX	Huehuetoca	Product Engineering	SHEET	01 / 01		

2 HP 04 Poles 60Hz 417483138

UNCONTROLLED COPY

RELEASED

ZME A3