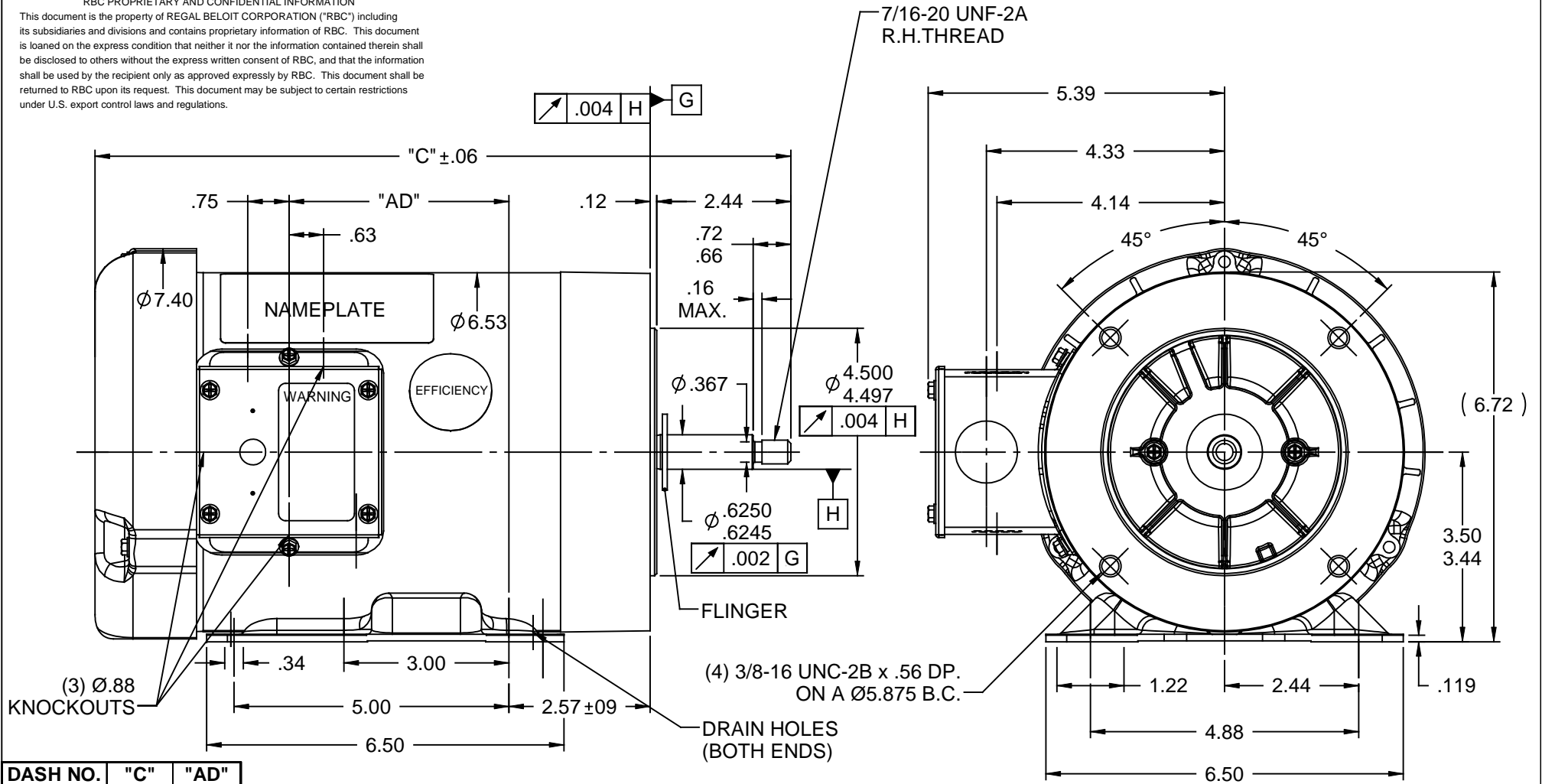


RBC PROPRIETARY AND CONFIDENTIAL INFORMATION

This document is the property of REGAL BELOIT CORPORATION ("RBC") including its subsidiaries and divisions and contains proprietary information of RBC. This document is loaned on the express condition that neither it nor the information contained therein shall be disclosed to others without the express written consent of RBC, and that the information shall be used by the recipient only as approved expressly by RBC. This document shall be returned to RBC upon its request. This document may be subject to certain restrictions under U.S. export control laws and regulations.



DASH NO.	"C"	"AD"
700	13.16	4.50
650	12.66	4.00
600	12.16	3.50
550	11.66	3.00
500	11.16	2.50

- NOTES:  
 1) GASKETS THROUGHOUT  
 2) FLINGER ON SHAFT  
 3) STAINLESS STEEL SHAFT EXTENSION

T-BOLTS MUST BE PARALLEL TO BASE ±1/32

				TOLERANCES UNLESS SPECIFIED		ELECTRIC MOTORS GEARMOTORS AND DRIVES		DRAWN KMM 07/31/06	
				DEC	INCHES			CHK	
				.X	±.1			APPR PG 07/31/06	
				.XX	±.03			SCALE 3:8	
				.XXX	±.005			REF 028547	
				.XXXX	±.0005	MAT'L JET PUMP		FMF 113032.00	
NO	REVISION	BY & DATE	CHK	ANG	±1/2°	FINISH	PAGE 1 OF 1		
THIRD ANGLE PROJECTION				RFP	PREV	SIZE	DRAWING NO		REV
				NETWORK FILE NAME 028823		A	028823		