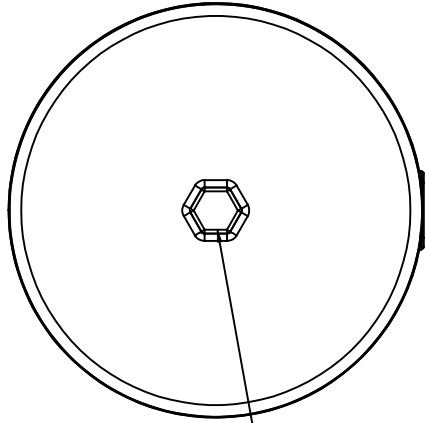
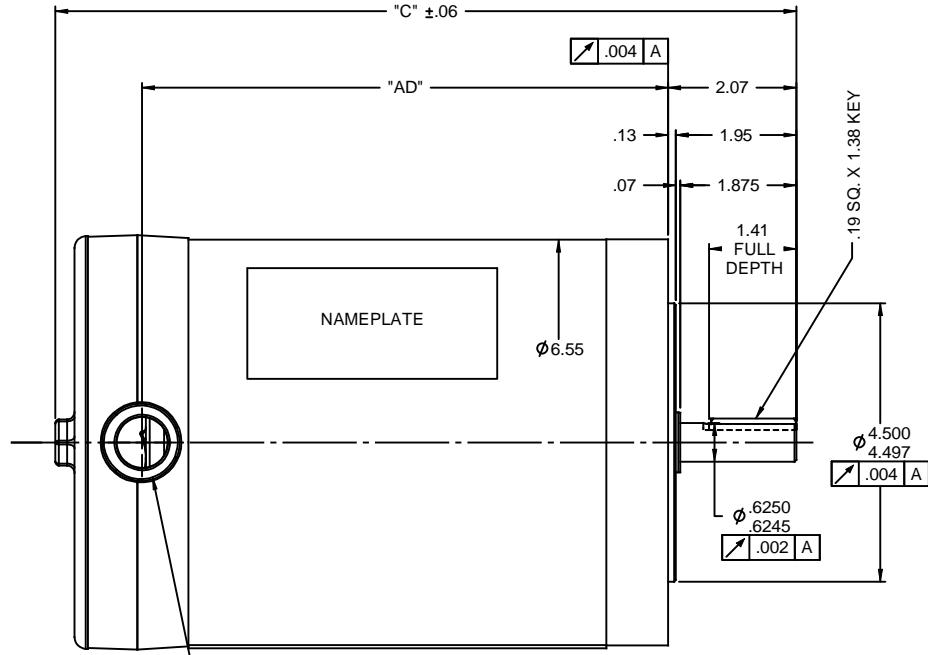


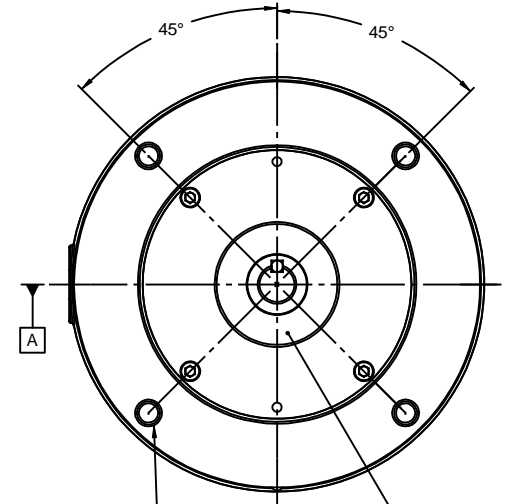
RBC PROPRIETARY AND CONFIDENTIAL INFORMATION
 This document is the property of REGAL BELOIT CORPORATION ("RBC") including its subsidiaries and divisions and contains proprietary information of RBC. This document is loaned on the express condition that neither it nor the information contained therein shall be disclosed to others without the express written consent of RBC, and that the information shall be used by the recipient only as approved expressly by RBC. This document shall be returned to RBC upon its request. This document may be subject to certain restrictions under U.S. export control laws and regulations.



3/4" HEX DRIVER FOR COVER REMOVAL



1/2-14 NPT CONDUIT HOLE



(4) 3/8-16 UNC-2B X .56 DEEP ON A Ø5.875 B.C. SHAFT SEAL

DASH NO.	"C"	"AD"
525	10.47	7.00
550	10.72	7.25
575	10.97	7.50
600	11.22	7.75
625	11.47	8.00
650	11.72	8.25
675	11.97	8.50
700	12.22	8.75

		TOLERANCES UNLESS SPECIFIED:		DRAWN LST 9/4/09	
		DEC	INCHES	CHK	
		X	±.1	APPR	
		.XX	±.03	SCALE 1:2	
		.XXX	±.005	REF	
		.XXXX	±.0005	FMF	
NO	REVISION	BY & DATE	CHK ANG ±1/2°	FINISH	PAGE OF
			RFP	PREV	REV
THIRD ANGLE PROJECTION			NETWORK FILE NAME	SIZE B	DRAWING NO 028768
				REGAL BELOIT CORPORATION	
				TITLE OUTLINE 56C FRAME	
				TENV "C" FACE	
				MAT'L	