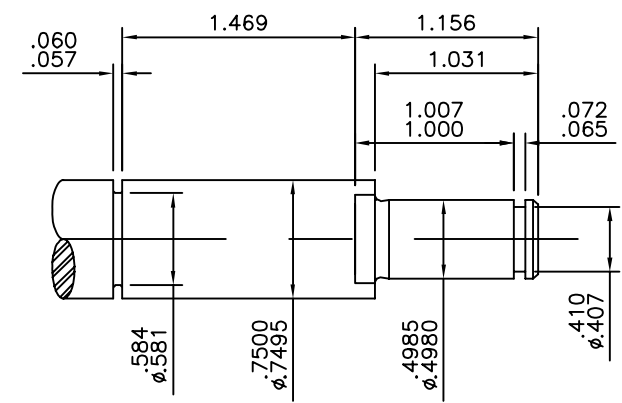
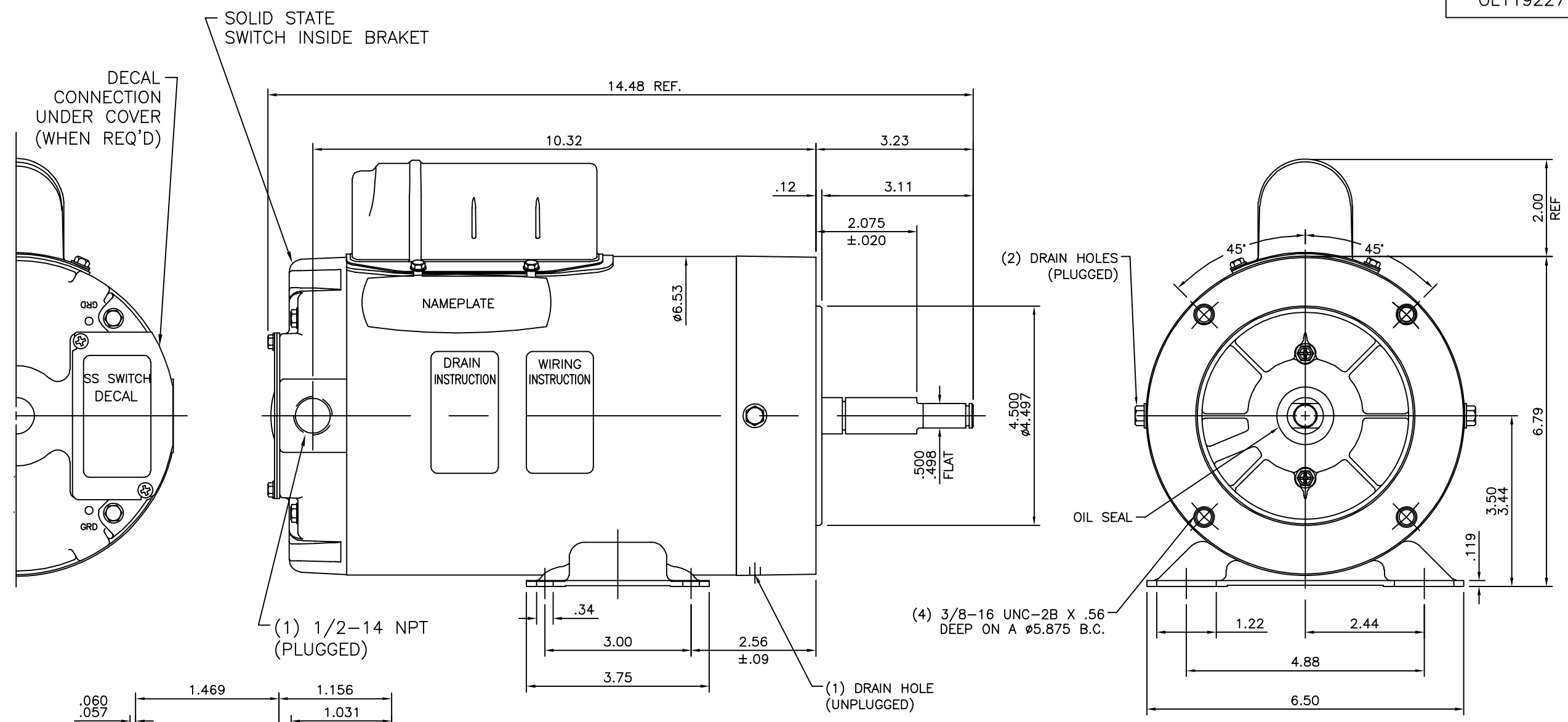


OL119227



SHAFT EXTENSION DETAIL
2X SCALE

GASKETS THROUGHOUT
MAXIMUM FACE RUNOUT TO BE .004 T.I.R.
MAXIMUM PILOT ECCENTRICITY .004 T.I.R.
PERMISSIBLE SHAFT RUNOUT .003 T.I.R.

		TOLERANCES UNLESS SPECIFIED		LEESON	ELECTRIC MOTORS GEARMOTORS AND DRIVES	DRAWN
NO.	REVISION	DEC.	INCHES			CHK
		.X	±.1			KR 09/05/2014
		.XX	±.03			JD 09/05/2014
		.XXX	±.005			
00	LEAD HOLE CHANGED TO F1 & SS SWITCH ADDED	.XXXX	±.0005		TITLE	SCALE 1:1
					OUTLINE - 56CZ FRAME TENV - RIGID "C"	REF OL113939
					MAT'L.	FMF 119227.00
					FINISH	PREV
		RFP	±1/2'		CAD FILE	OL119227
		DIST			SIZE	DRAWING NO.
					B	OL119227
						REV. 001

THIS DRAWING IN DESIGN AND DETAIL IS OUR PROPERTY AND MUST NOT BE USED EXCEPT IN CONNECTION WITH OUR WORK ALL RIGHTS OF DESIGN AND INVENTION ARE RESERVED THIS IS AN ELECTRONICALLY GENERATED DOCUMENT - DO NOT SCALE THIS PRINT