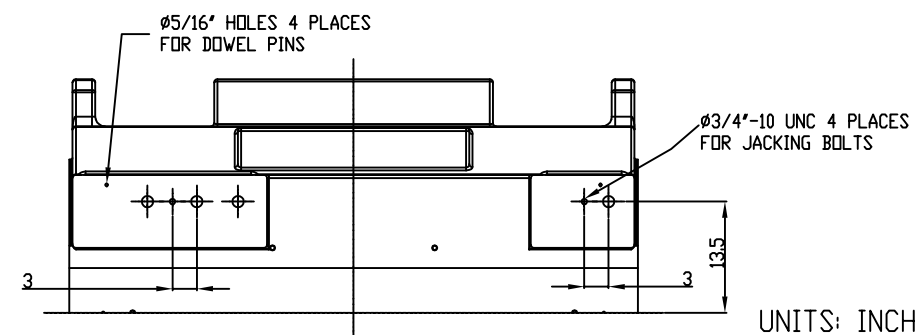
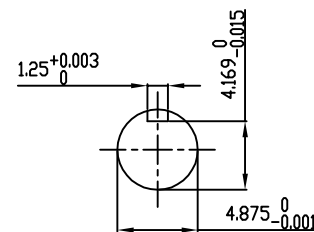


TECHNICAL INFORMATION

1. BEARING LUBRICATION DE: MOBIL POLYREX EM OR EQUIVALENT
ODE: MOBIL POLYREX EM OR EQUIVALENT
2. BEARING TYPE DE: 6328 INS
ODE: 6328 INS
3. WINDING TEMP. DETECTORS
NUMBER AND TYPE: 6xRTD(Pt0°C-100ohm)
LOCATION: IN STATOR SLOT
4. BEARING TEMP. DETECTORS
NUMBER AND TYPE: _____
5. SPACE HEATER 1 PHASE
VOLTS: 120 WATTS: 800
6. ROTATION: CCW VIEWED FROM NON DRIVE END
THIS MOTOR IS UNI DIRECTIONAL
7. MOTOR PAINT COLOR: GRAY
8. APPROX. WEIGHT: 14,000 Lbs
9. ACCESORIES: _____

**PRELIMINARY
FOR QUOTATION ONLY
DO NOT BUILD
FROM THIS DRAWING**



UNITS: INCHES

DRAWING LIST

| | | | | | |
|-----------------------------------|-------------|-----|--|-----|----------|
| MAIN TERMINAL BOX 130P-7550-68 | | | | | |
| AUX TERMINAL BOX FOR | | | | | |
| SPACE HEATER | 139-0052-01 | 2 | GRS FROM SRI JACKING TO INLINE | RWS | 1/2/14 |
| R.T.D. | 139-0052-04 | 1 | UPDATE INLET WINDOW SIZE & MAIN T-BOX P. No., CHG. SPACE HEATER WATTS FROM 400 | JMP | 10/12/11 |
| THERMISTOR | N/A | | | | |
| | | 0 | FIRST ISSUE | JMP | 03/01/11 |
| PRODUCTION # | N/A | NO. | REVISION | BY | DATE |

**MOTOR OUTLINE FOR
THREE PHASE INDUCTION MOTOR**

| | | | | | | |
|--|----------------------|----------------|---------------------|--------------------------------------|--------------------------|-----------------|
| CUSTOMER NAME | | | | P.O. NO. | MOTOR TAG NO. | |
| OUTPUT HP | POLE 4 | VOLTAGE V | FREQUENCY Hz | FULL LOAD SPEED (min ⁻¹) | TOSHIBA MODEL NO. | |
| TYPE | FORM | INS. CLASS F | RATING CONT. | FRAME 6810US | S.F. | ENCLOSURE WP-II |
| TOSHIBA INTERNATIONAL CORPORATION HOUSTON, TEXAS U.S.A. | | | | | | |
| 3rd ANGLE PROJ. | PREPARED BY: J PINON | DATE: 03/01/11 | CHECKED BY: B.SIDLE | DATE: 03/01/11 | DRAWING NO.: MDSL0087-61 | REV. 2 |

TYPICAL MOTOR PERFORMANCE DATA

Model: 8008WTAL11E-C

| | | | | | | | | |
|-----------|-----|------------|--------|--------|----------------|-------------|----------|--------------|
| HP | kW | Pole | FL RPM | Frame | Voltage | Hz | Phase | FL Amps |
| 800 | 597 | 8 | 889 | 6810US | 4000 | 60 | 3 | 108 |
| Enclosure | IP | Ins. Class | S.F. | Duty | NEMA Nom. Eff. | NEMA Design | kVA Code | Ambient (°C) |
| WP-II | 24 | F | 1.15 | CONT | 94.9 | - | G | 40 C |

| | | | | | |
|--------------|--------|-------|---------|----------------|------------------|
| Load | HP | kW | Amperes | Efficiency (%) | Power Factor (%) |
| Full Load | 800 | 596.6 | 107.6 | 94.9 | 84.3 |
| ¾ Load | 600.00 | 447.4 | 83.3 | 94.5 | 82.1 |
| ½ Load | 400.00 | 298.3 | 61.3 | 93.3 | 75.3 |
| ¼ Load | 200.00 | 149.1 | 43.6 | 89.4 | 55.2 |
| No Load | | | 33.9 | | 4.2 |
| Locked Rotor | | | 683.30 | | 15.5 |

| | | | | |
|-------------------|----------------------|-----------------|--------------------|---|
| Torque | | | | Rotor wk ² Inertia (lb-ft ²) |
| Full Load (lb-ft) | Locked Rotor (% FLT) | Pull Up (% FLT) | Break Down (% FLT) | |
| 4726 | 65 | 75 | 225 | 1727.76 |

| | | | | | |
|--------------------|------|---------------------------|------------|------------|----------------------------|
| Safe Stall Time(s) | | Sound Pressure dB(A) @ 1M | Bearings* | | Approx. Motor Weight (lbs) |
| Cold | Hot | | DE | NDE | |
| 75.2 | 50.4 | - | 6328C3 INS | 6328C3 INS | |

*Bearings are the only recommended spare part(s).

Motor Options:
Mounting:Footed,Shaft:US Shaft

| | |
|-------------|--|
| Customer | |
| Customer PO | |
| Sales Order | |
| Project # | |

Tag:

All characteristics are average expected values.

TOSHIBA INTERNATIONAL CORPORATION · HOUSTON, TEXAS U.S.A.

| | | | | | |
|-------------|-----------|------------------|-------------|-------------|---------------|
| Engineering | bmmamen | Doc. Written By | D. Suarez | Doc.# / Rev | MPCF-1119 / 0 |
| Engr. Date | 7/10/2014 | Doc. Approved By | M. Campbell | Doc. Issued | 6/8/2011 |

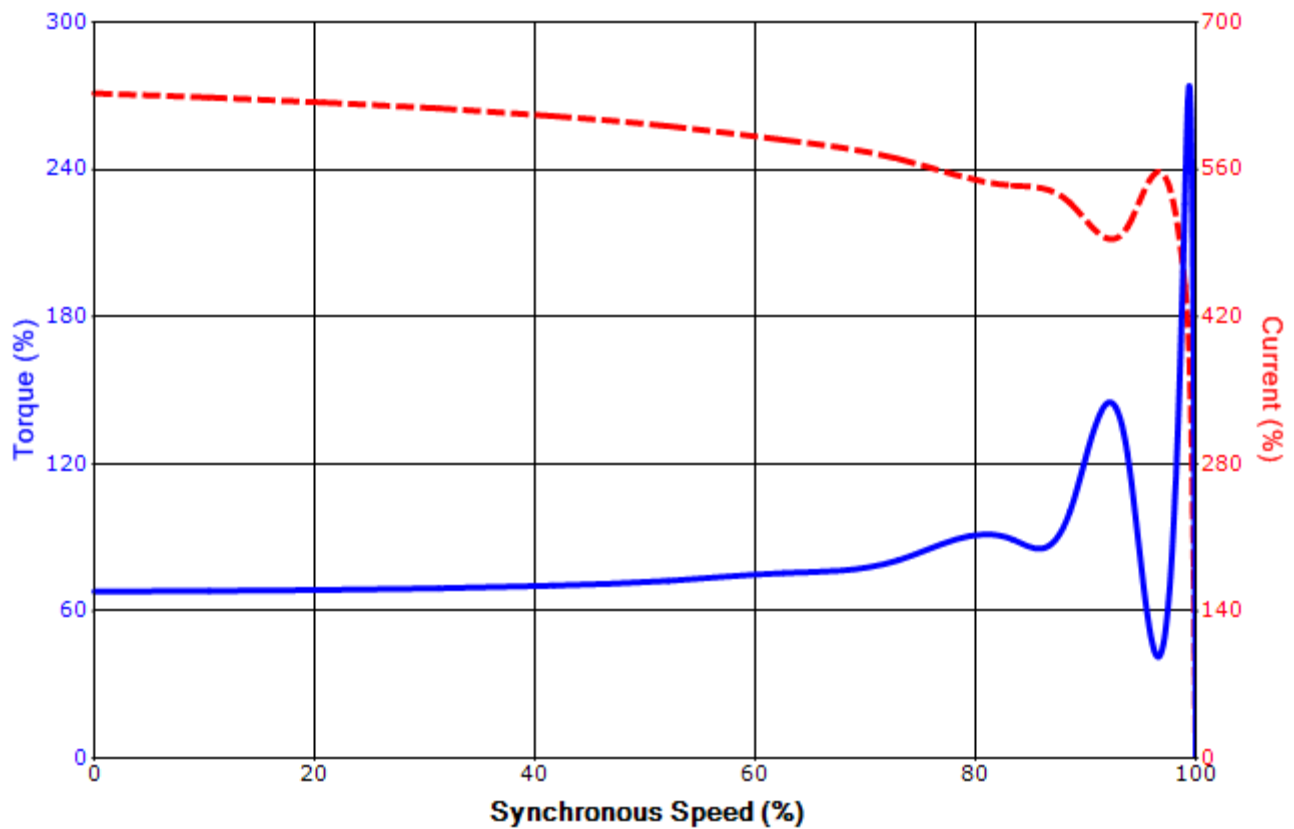
| | | | |
|-------------|-----------|------------|--|
| Issued Date | 4/23/2015 | Transmit # | |
| Issued By | dschoeck | Issued Rev | |

SPEED TORQUE/CURRENT CURVE

Model: 8008WTAL11E-C

| | | | | | | | | |
|-------------------|---|-------------------|------------------|-------------|----------------|-------------|----------|----------------|
| HP | kW | Pole | FL RPM | Frame | Voltage | Hz | Phase | FL Amps |
| 800 | 597 | 8 | 889 | 6810US | 4000 | 60 | 3 | 108 |
| Enclosure | IP | Ins. Class | S.F. | Duty | NEMA Nom. Eff. | NEMA Design | kVA Code | Ambient (°C) |
| WP-II | 24 | F | 1.15 | CONT | 94.9 | - | G | 40 C |
| Locked Rotor Amps | Rotor wk ² Inertia (lb-ft ²) | Torque | | | | | | Break Down (%) |
| | | Full Load (lb-ft) | Locked Rotor (%) | Pull Up (%) | | | | |
| 683.30 | 1727.76 | 4726 | 65 | 75 | | | 225 | |

Design Values



| | | | |
|-------------|--|--|-----|
| Customer | | wk ² Load Inertia (lb-ft ²) | - |
| Customer PO | | Load Type | - |
| Sales Order | | Voltage (%) | 100 |
| Project # | | Accel. Time | - |

Tag:

All characteristics are average expected values.

TOSHIBA INTERNATIONAL CORPORATION · HOUSTON, TEXAS U.S.A.

| | | | | | |
|-------------|-----------|------------------|-------------|-------------|---------------|
| Engineering | bmammen | Doc. Written By | D. Suarez | Doc.# / Rev | MPCF-1121 / 0 |
| Engr. Date | 7/10/2014 | Doc. Approved By | M. Campbell | Doc. Issued | 6/8/2011 |