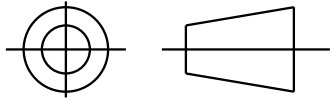


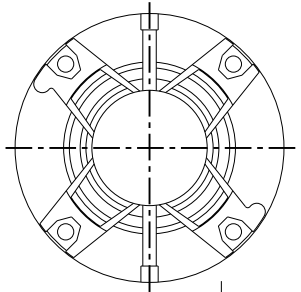
SHEET 1  
REV  
52A101941 8

THIRD ANGLE PROJECTION

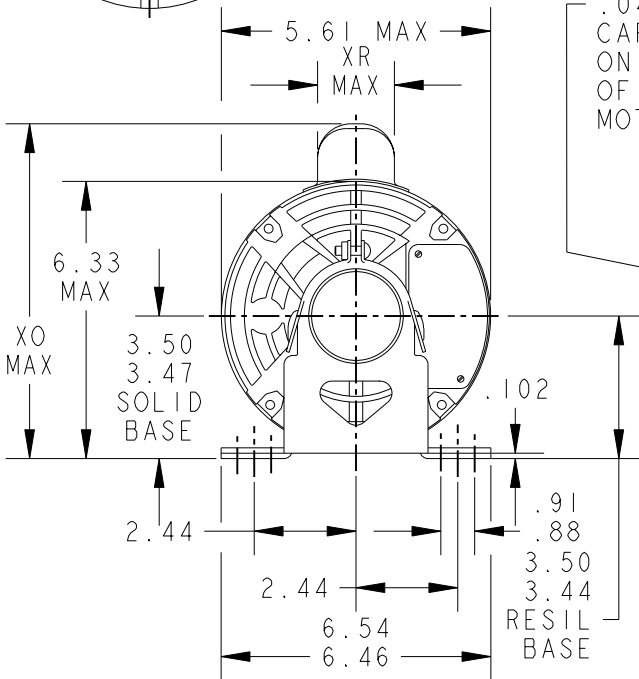


REVISIONS

REV.	DESCRIPTION	DATE	APPROVED
7	REDRAWN NO CHANGE T196-22390	07/10/96	MDP
8	CHG TO RBC FORMAT PER ISO5-1777	12/21/2005	DURGA

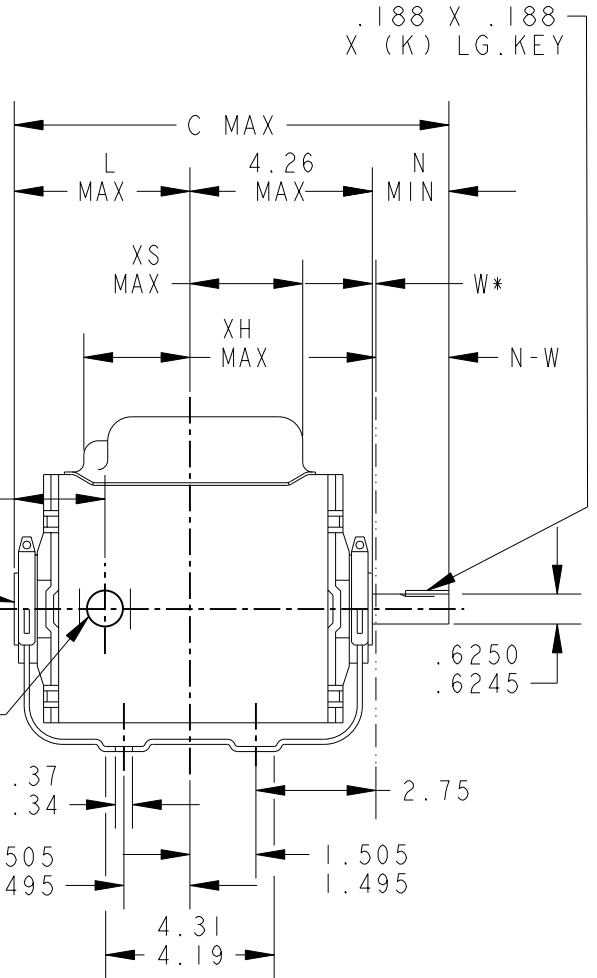


VIEW SHOWING  
PE VENTILATION  
OPENINGS



.04 MAX END  
CAP OMITTED  
ON BOTH ENDS  
OF BALL BRG.  
MOTORS

.500-14  
CONDUIT  
THREAD




\*W IS A CLEARANCE DUE TO VARIATION IN PARTS & ASSEMBLY.

6	KC	37	56	10.72	1.38	4.63	1.88	2.01/1.79	3.07	8.93	2.72	2.70	
5	KC	38	56	11.69	1.38	5.23	2.25	2.38/2.16	3.65	7.81	1.60	2.12	
4	KC	39	56	11.85	1.38	5.76	1.88	2.01/1.79	4.18	7.81	1.60	1.59	7.75
3	KC	39	56	11.85	1.38	5.76	1.88	2.01/1.79	4.03	8.43	2.22	1.34	7.75
2	KC	39	56	11.85	1.38	5.76	1.88	2.01/1.79	4.03	8.93	2.72	1.34	7.75
1	KC	36	56	10.32	1.38	4.23	1.88	2.01/1.79	2.50	8.43	2.22	2.87	

PT	TYPE	GE SIZE	NEMA FR	C	K	L	N	N-W	XH	XO	XR	XS	MIN. SHELL
----	------	---------	---------	---	---	---	---	-----	----	----	----	----	------------

SIGNATURES		DATE
MODEL	.	.
DETAIL	JPK	03/31/76
CHECKED	.	.
ENGRG	.	.
MFG	.	.
FOR ADDITIONAL INFO REFER TO:	QUALITY	.
APPLIED PRACTICES	ISSUED	MDP 07/10/96
DIMENSIONS ARE IN INCHES ✓	SOLID MODEL: 52A101941	



**REGAL-BELOIT CORPORATION**

**TITLE**  
**OUTLINE**  
**FORM N-GENERAL PURPOSE MOTOR-DRIP PROOF-SOLID**  
**OR RESIL BASE-BALL OR SLEEVE BEARING**

SIZE: DRAWING  
**A**

SCALE: 1.000 REF. No: . SHEET 1 of 1

**52A101941** **REV 8**