

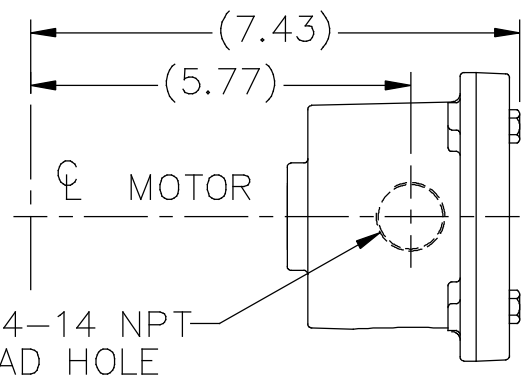
MOTOR NAMEPLATE
READ FROM FRONT

UL/CSA
NAME-
PLATE

(R.18)

3/4-14 NPT CONNECTION
DECAL @ 'A'
READ FROM 'A'

LEAD DESCRIPTION: 1 BLACK, 1 PURPLE, 1 BROWN, 1 GREEN,
1 ORANGE, 1 WHITE, 1 YELLOW, AND 1 RED ALL EXITING A
SEALED PIPE NIPPLE, 26" LONG.



DASH	C
517	9.68
580	10.31
623	10.74

VIEW OF CONDUIT BOX

				TOLERANCES UNLESS SPECIFIED		REGAL-BELOIT CORPORATION	DRAWN RWR 03-22-2005	
				DEC.	INCHES		CHK ML 03-23-2005	APPD MJS 03-28-2005
				.X	±.1			
3	ADDED VIEW OF COND BOX INSTALL	ISAAC 12-5139	WGJ 03-05-2013	DD	.XX	±.03	TITLE	OUTLINE
2	CHG. LEADS FROM 6" TO 26"	CN39528	RWR 08/26/2005	ML	.XXX	±.005	48 FRAME - XP	
1	ADDED UL/CSA AND MOTOR NAMEPLATE	CN 46061	MJK 04/27/2005		.XXXX	±.0005	MAT'L	
NO.	REVISION	BY & DATE	CHK	ANG	±7'30"		FINISH	
THIS DRAWING IN DESIGN AND DETAIL IS OUR PROPERTY AND MUST NOT BE USED EXCEPT IN CONNECTION WITH OUR WORK ALL RIGHTS OF DESIGN AND INVENTION ARE RESERVED THIS IS AN ELECTRONICALLY GENERATED DOCUMENT - DO NOT SCALE THIS PRINT				RFP	03-28-2005		CAD FILE	ss403480ge
				DIST	WP		SIZE	A
							DRAWING NO.	SS403480GE
							PAGE	1 OF 1
							REV.	3