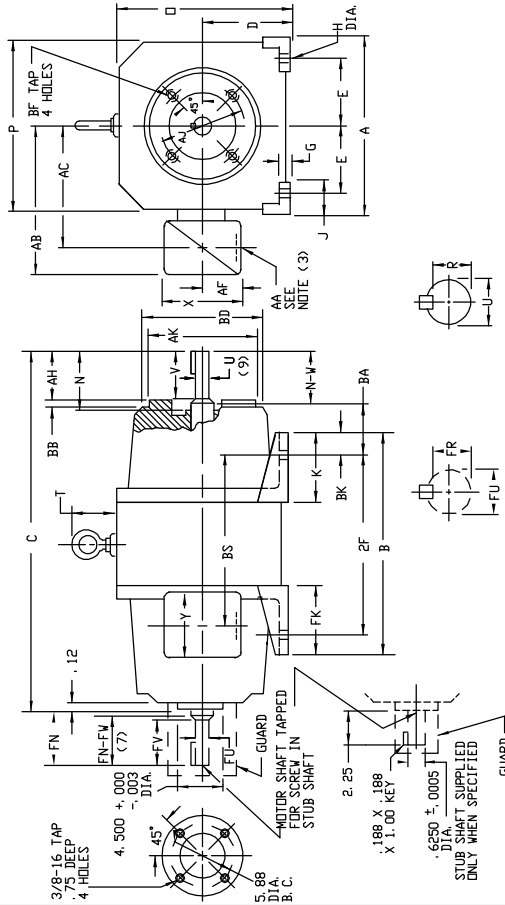


INDUSTRIAL DIRECT CURRENT MOTORS AND GENERATORS - RPM III

ENCLOSURE: DRIP-PROOF FULLY-GUARDED
SPLASHPROOF, TOTALLY ENCLOSED
METHOD OF DRIVE: COUPLED OR BELTED
MOUNTING: FOOT, NEMA AC "C" FACE
PROVISION FOR TACHOMETER MOUNTING
ACCESSORIES: ONLY WHEN SPECIFIED
COOLING: SELF-VENTILATED
NON-VENTILATED

FRAMES C180ATCZ

DRIVE END SHAFT PER NEMA AC MOTOR SHAFT



DIMENSIONS ARE IN INCHES

FRAME	A	DK(1)	E	G	H	J	O	P	T	BA	K	FK	BK	BB	BD	BF	TAP	BF TAP	AK(2)	AJ	AK(2)
C181ATCZ-C181ATCZ	9.00	4.50	3.75	3.31	4.44	1.50	6.88	8.75	1.88	2.75	4.38	4.38	1.50	1.25	1.75	1/2-13	.88	7.25	1.80	1.80	1.80

FRAME	CL(1)	B	RS	2F	AH	N	N-V	U(2)	V	AK(3)	SO	LGTH	FN	FN-EVT	FK(2)	EV	FK(4)	SO	LGTH	RS	VT
C181ATCZ	24.06	14.00	11.00	12.50	2.62	3.12	2.88	1.1250	2.62	.986	2.50	1.75	2.44	2.25	1.1250	2.00	.986	2.50	1.38	1.80	1.80
C181ATCZ	25.56	15.50	12.50	14.00	2.62	3.12	2.88	1.1250	2.62	.986	2.50	1.75	2.44	2.25	1.1250	2.00	.986	2.50	1.38	1.80	1.80

FRAME	MAX. HPS	STANDARD SIZE						DNE SIZE LARGER											
		AA(S)	AB	AC	AF	X	Y	AA(S)	AB	AC	AF	X	Y						
C180ATCZ	96	1-1/4 & 1-1/2	8.31	6.31	5.75	1.94	4.38	5.00	6.12	70502B-1-R	1-1/4 & 1-1/2	8.31	6.31	5.75	1.94	4.38	5.00	6.12	70502B-1-R

FRAME	MAX. HPS	STANDARD SIZE						DNE SIZE LARGER											
		AA(S)	AB	AC	AF	X	Y	AA(S)	AB	AC	AF	X	Y						
C180ATCZ	40	3/4 & 1"	7.31	5.75	5.00	1.94	4.38	5.00	6.12	70502B-2-S	1-1/2	10.31	7.88	7.00	2.50	5.00	5.75	7.00	70502B-2-T

FRAME	MAX. HPS	STANDARD SIZE						DNE SIZE LARGER							
		AA(S)	AB	AC	AF	X	Y	AA(S)	AB	AC	AF	X	Y		
C180ATCZ	96	1-1/2	10.31	17.88	3.00	6.00	7.00	70502P-2-R	2	10.31	17.88	3.00	6.00	7.00	70502P-2-S

- (1) *TY DIMENSION WILL NOT BE EXCEEDED. SHIMS UP TO .03 INCHES IN THICKNESS ARE USUALLY REQUIRED FOR COUPLED OR GEARED MACHINES.
- (2) TERMINAL BOX VARY AT GOOD - 0005
- (3) TERMINAL BOX OR BOTTOM LID FOR LEAD OUTLET AT TOP SIDES OR BOTTOM
- (4) FOR "X/P" TERMINAL BOX DIMENSIONS SEE 609989-1.
- (5) AA CONDUIT TERMINAL BOX DIMENSIONS SEE 609989-2.
- (6) AA PIPE TAP TERMINAL BOX PROVIDED WITH DOUBLE INKOUT.
- (7) OPPOSITE DRIVE END SHAFT SUPPLIED ONLY WHEN SPECIFIED.
- (8) FACE RADIUS AND CIRCULARITY .004 MAX. T. I. R.
- (9) 180T AC MOTOR SHAFT EXTENSION.

(10) WHEN THE MOTOR APPLICATION DOES NOT REQUIRE THE USE OF DDP, DRIVE END, ADD .25 TO "C" DIM. FOR BRACKET COVER.
 TERMINAL BOX LOCATED ON OPPOSITE SIDE WHEN F-2, W-1, N-4, V-5, N-7 OR C-1 MOUNTING IS SPECIFIED.
 BOX LOCATED ON TOP WHEN SPECIFIED.
 MOTOR WEIGHT MAY VARY 15% FOR NON-STANDARD RATINGS AND/OR ACCESSORIES.
 IF MOUNTING CLEARANCE DETAILS ARE REQUIRED, CONSULT FACTORY.

CUSTOMER IS RESPONSIBLE FOR DETERMINING THAT BALDOR'S PRODUCT WILL PERFORM SUITABLY IN THE INTENDED APPLICATION.

REV. DESC: LOADED TO BUS	TDR: 000000577407
REV. LTR: -	BY: CONNAS
FILE: \R665\00015\689	DIMENSION DRAWING, C180ATCZ, TENY, DDP, FOOT MTG., NEMA AC C-FACE
MTL: -	

