

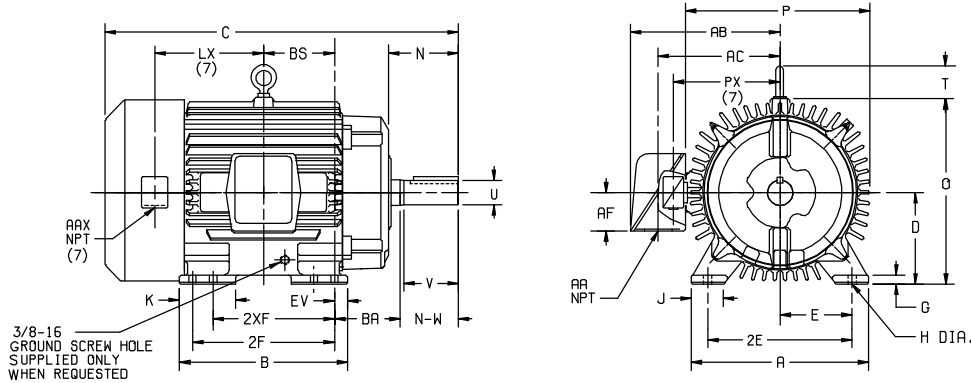
DUTY MASTER ALTERNATING CURRENT MOTORS

SQUIRREL-CAGE INDUCTION
CAST IRON CONSTRUCTION

ENCLOSURE: TOTALLY ENCLOSED
MOUNTING: FOOT

COOLING: FAN COOLED

FRAMES 250T THRU 440T



DIMENSIONS ARE IN INCHES; SEE SHEET 2 FOR DIMENSIONS IN MILLIMETERS

FRAME	A	D(2)	E	G	H	J	K	O	P	T	CAST IRON TERMINAL BOX				(7) AUX. CONDUIT BOX			BA	EV
											AA	AB	AC	AF	AAX	LX (7)	PX (7)		
254T-256T	12.50	6.25	5.00	.75	.56	2.50	--	13.25	13.25	2.44	1-1/4	10.81	8.81	2.50	3/4	6.31	9.31	4.25	1.00
284T-286TS	13.75	7.00	5.50	.75	.56	2.50	--	14.75	14.88	2.44	1-1/2	12.62	10.19	3.00	3/4	6.88	10.50	4.75	1.00
324T-326TS	15.50	8.00	6.25	.88	.69	2.75	4.50	16.69	17.00	2.44	2	15.44	11.69	3.62	3/4	8.00	10.50	5.25	1.38
364T-365TS	17.00	9.00	7.00	.88	.69	2.75	3.88	18.50	19.50	2.94	3	18.00	13.81	4.12	3/4	8.38	11.62	5.88	1.38
404T-405TS	19.00	10.00	8.00	1.12	.81	3.25	4.62	21.31	22.50	2.94	3	19.25	15.06	4.12	3/4	9.62	14.44	6.62	1.13
444T-445TS	21.00	11.00	9.00	1.12	.81	3.25	5.25	23.38	25.25	3.25	3	22.19	17.44	6.00	3/4	11.12	15.25	7.50	1.25

(1)

FRAME SIZE	C	BS	B	2F	(4) 2XF	N	SHAFT AND KEY					LGTH.	WEIGHT LBS. (5)
							N-W(6)	U(3)	V	SQ.	LGTH.		
254T	24.56	5.00	12.00	---	8.25	4.12	4.00	1.625	3.75	.375	2.88	335	
256T	24.56	5.00	12.00	10.00	---	4.12	4.00	1.625	3.75	.375	2.88	345	
284T	27.44	5.50	13.00	---	9.50	5.00	4.62	1.875	4.38	.500	3.25	475	
284TS	26.06	5.50	13.00	---	9.50	3.62	3.25	1.625	3.00	.375	1.88	475	
286T	27.44	5.50	13.00	11.00	---	5.00	4.62	1.875	4.38	.500	3.25	490	
286TS	26.06	5.50	13.00	11.00	---	3.62	3.25	1.625	3.00	.375	1.88	490	
324T	30.44	6.00	14.75	---	10.50	5.62	5.25	2.125	5.00	.500	3.88	590	
324TS	28.94	6.00	14.75	---	10.50	4.12	3.75	1.875	3.50	.500	2.00	590	
326T	30.44	6.00	14.75	12.00	---	5.62	5.25	2.125	5.00	.500	3.88	630	
326TS	28.94	6.00	14.75	12.00	---	4.12	3.75	1.875	3.50	.500	2.00	630	
364T	33.44	6.12	15.00	---	11.25	6.25	5.88	2.375	5.62	.625	4.25	865	
364TS	31.31	6.12	15.00	---	11.25	4.12	3.75	1.875	3.50	.500	2.00	859	
365T	33.44	6.12	15.00	12.25	---	6.25	5.88	2.375	5.62	.625	4.25	890	
365TS	31.31	6.12	15.00	12.25	---	4.12	3.75	1.875	3.50	.500	2.00	884	
404T	38.31	6.88	16.00	---	12.25	7.50	7.25	2.875	7.00	.750	5.62	1220	
404TS	35.31	6.88	16.00	---	12.25	4.50	4.25	2.125	4.00	.500	2.75	1211	
405T	38.31	6.88	16.00	13.75	---	7.50	7.25	2.875	7.00	.750	5.62	1260	
405TS	35.31	6.88	16.00	13.75	---	4.50	4.25	2.125	4.00	.500	2.75	1251	
444T	44.62	8.25	19.00	---	14.50	8.94	8.50	3.375	8.25	.875	6.88	1670	
444TS	40.88	8.25	19.00	---	14.50	5.19	4.75	2.375	4.50	.625	3.00	1654	
445T	44.62	8.25	19.00	16.50	---	8.94	8.50	3.375	8.25	.875	6.88	1860	
445TS	40.88	8.25	19.00	16.50	---	5.19	4.75	2.375	4.50	.625	3.00	1844	

(1)

- (1) SPECIAL DIMENSIONS APPLYING TO THIS ORDER ON THIS LINE.
- (2) "D" VARIES $\begin{cases} 250T - 320T +.00, -.03. \\ 360T - 440T +.00, -.06. \end{cases}$
- (3) "U" VARIES $\begin{cases} \text{UP TO } 1.625 \text{ DIA. } +.0000, -.0005 \\ \text{1.625 AND LARGER } +.000, -.001. \end{cases}$
- (4) ALL FRAMES HAVE EIGHT MOUNTING HOLES FOR DUAL MOUNTING.
- (5) MOTOR WEIGHTS MAY VARY BY 15% DEPENDING UPON RATING.
- (6) "N-W" VARIES +.00, -.25.

- (7) AUXILIARY CONDUIT BOX SUPPLIED WHEN SPECIFIED CONDUIT BOXES LOCATED ON OPPOSITE SIDE WHEN F-2,W-1, W-4,W-5,W-7, OR C-1 MOUNTING IS SPECIFIED.
- IF MOUNTING CLEARANCE DETAILS ARE REQUIRED, CONSULT FACTORY.
- MAXIMUM PERMISSIBLE SHAFT RUNOUT WHEN MEASURED AT END OF STD. SHAFT EXTENSION IS .002 T.I.R. UP TO AND INCLUDING 1.625 DIA. AND .003 T.I.R. 1.625 DIA. TO 5 INCH DIA.

FRAME-- _____ TYPE-- _____ CERTIFIED FOR-- _____
 ORDER-- _____ ITEM-- _____ HP-- _____ RPM-- _____ PH-- _____ HZ _____ VOLTS _____
 SALES ORDER-- _____ APPROVED BY-- _____ DATE _____

CUSTOMER IS RESPONSIBLE FOR DETERMINING THAT MOTOR PERFORMANCE IS SUITABLE IN THE APPLICATION.

BALDOR • DODGE • RELIANCE

DIM SHT 250T-440T TEFC FT MTG STD T & TS SGL EXT XT

REV. DESC: REMOVING TITLEBLOCK
 REV. LTR: A
 FILE: \FRAG\00004\525
 MTL: --
 TDR: 000000448517
 BY: CONBPM
 VERSION: 01
 REVISED: 14:06:59 11/07/2007

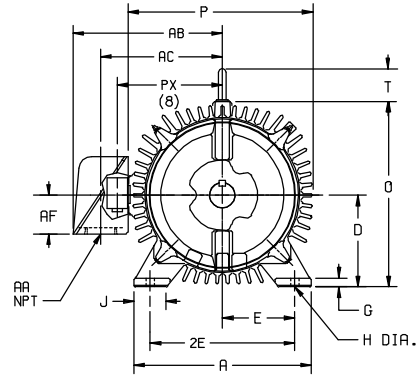
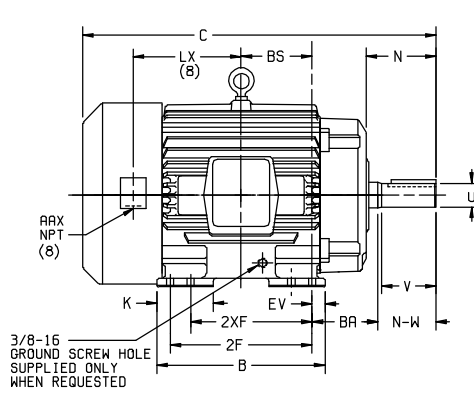
DUTY MASTER ALTERNATING CURRENT MOTORS

SQUIRREL-CAGE INDUCTION
CAST IRON CONSTRUCTION

ENCLOSURE: TOTALLY ENCLOSED
MOUNTING: FOOT

COOLING: FAN COOLED

FRAMES 250T THRU 440T



DIMENSIONS ARE IN MILLIMETERS; SEE SHEET 1 FOR DIMENSIONS IN INCHES

FRAME	A	D(2)	E	G	H	J	K	O	P	T	CAST IRON TERMINAL BOX (8) AUX. CONDUIT BOX				BA	EV			
											AA(7)	AB	AC	AF			AAX(7)	LX (8)	PX (8)
254T-256T	317.5	158.8	127.0	19.0	14.2	63.5	---	336.5	336.5	62.0	1-1/4	274.6	223.8	63.5	3/4	160.3	236.5	108.0	25.4
284T-286TS	349.2	177.8	139.7	19.0	14.2	63.5	---	374.6	378.0	62.0	1-1/2	320.5	258.8	76.2	3/4	174.8	266.7	120.7	25.4
324T-326TS	393.7	203.2	158.8	22.4	17.5	69.9	114.3	423.9	431.8	62.0	2	392.2	296.9	91.9	3/4	203.2	266.7	133.3	35.1
364T-365TS	431.8	228.6	177.8	22.4	17.5	69.9	98.6	469.9	495.3	74.7	3	457.2	350.8	104.6	3/4	212.9	295.1	149.4	35.1
404T-405TS	482.6	254.0	203.2	28.4	20.6	82.5	117.3	541.3	571.5	74.7	3	488.9	382.5	104.6	3/4	244.3	366.8	168.1	28.7
444T-445TS	533.4	279.4	228.6	28.4	20.6	82.5	133.3	593.9	641.3	82.5	3	563.6	443.0	152.4	3/4	282.4	387.3	190.5	31.7

(1)

FRAME SIZE	C	BS	B	2F	(4) 2XF	N	SHAFT AND KEY					WEIGHT KGS. (5)	
							N-W(6)	U(3)	V	SQ.	LGTH.		
254T	623.8	127.0	304.8	---	209.6	104.6	101.6	41.27	95.3	9.52	73.2	151	
256T	623.8	127.0	304.8	254.0	---	104.6	101.6	41.27	95.3	9.52	73.2	156	
284T	697.0	139.7	330.2	---	241.3	127.0	117.3	47.63	111.3	12.70	82.5	215	
284TS	661.9	139.7	330.2	---	241.3	91.9	82.5	41.27	76.2	9.52	47.8	215	
286T	697.0	139.7	330.2	---	279.4	---	127.0	117.3	47.63	111.3	12.70	82.5	222
286TS	661.9	139.7	330.2	---	279.4	---	91.9	82.5	41.27	76.2	9.52	47.8	222
324T	773.2	152.4	374.6	---	266.7	142.7	133.3	53.97	127.0	12.70	98.6	267	
324TS	735.1	152.4	374.6	---	266.7	104.6	95.3	47.63	88.9	12.70	50.8	267	
326T	773.2	152.4	374.6	304.8	---	142.7	133.3	53.97	127.0	12.70	98.6	285	
326TS	735.1	152.4	374.6	304.8	---	104.6	95.3	47.63	88.9	12.70	50.8	285	
364T	849.4	155.4	381.0	---	285.7	158.8	149.4	60.33	142.7	15.88	108.0	392	
364TS	795.3	155.4	381.0	---	285.7	104.6	95.3	47.63	88.9	12.70	50.8	389	
365T	849.4	155.4	381.0	311.1	---	158.8	149.4	60.33	142.7	15.88	108.0	403	
365TS	795.3	155.4	381.0	311.1	---	104.6	95.3	47.63	88.9	12.70	50.8	400	
404T	973.1	174.8	406.4	---	311.1	190.5	184.1	73.02	177.8	19.05	142.7	553	
404TS	896.9	174.8	406.4	---	311.1	114.3	108.0	53.97	101.6	12.70	69.9	549	
405T	973.1	174.8	406.4	349.2	---	190.5	184.1	73.02	177.8	19.05	142.7	571	
405TS	896.9	174.8	406.4	349.2	---	114.3	108.0	53.97	101.6	12.70	69.9	567	
444T	1133.3	209.6	482.6	---	368.3	227.1	215.9	85.72	209.6	22.22	174.8	757	
444TS	1038.4	209.6	482.6	---	368.3	131.8	120.7	60.33	114.3	15.88	76.2	750	
445T	1133.3	209.6	482.6	419.1	---	227.1	215.9	85.72	209.6	22.22	174.8	843	
445TS	1038.4	209.6	482.6	419.1	---	131.8	120.7	60.33	114.3	15.88	76.2	836	

(1)

- (1) SPECIAL DIMENSIONS APPLYING TO THIS ORDER ON THIS LINE.
- (2) "D" VARIES — 250T - 320T +.0, -.8.
— 360T - 440T +.0, -1.5.
- (3) "U" VARIES — UP TO 41.27 DIA. +.000, -.013
— 41.27 AND LARGER +.00, -.03.
- (4) ALL FRAMES HAVE EIGHT MOUNTING HOLES FOR DUAL MOUNTING.
- (5) MOTOR WEIGHTS MAY VARY BY 15% DEPENDING UPON RATING.
- (6) "N-W" VARIES +.0, -6.4.
- (7) DIMENSIONS ARE IN INCHES.

- (8) AUXILIARY CONDUIT BOX SUPPLIED WHEN SPECIFIED.
CONDUIT BOXES LOCATED ON OPPOSITE SIDE WHEN F-2,W-1,
W-4,W-5,W-7, OR C-1 MOUNTING IS SPECIFIED.
- IF MOUNTING CLEARANCE DETAILS ARE REQUIRED, CONSULT
FACTORY.
- MAXIMUM PERMISSIBLE SHAFT RUNOUT WHEN MEASURED
AT END OF STD. SHAFT EXTENSION IS .05 T.I.R. UP TO
AND INCLUDING 41.27 DIA. AND .08 T.I.R. 41.27 DIA.
TO 127 MILL.DIA.

FRAME— _____ TYPE— _____ CERTIFIED FOR— _____
 ORDER— _____ ITEM— _____ HP— _____ RPM— _____ PH— _____ HZ _____ VOLTS _____
 SALES ORDER— _____ APPROVED BY— _____ DATE _____

CUSTOMER IS RESPONSIBLE FOR DETERMINING THAT MOTOR PERFORMANCE IS SUITABLE IN THE APPLICATION.

BALDOR • DODGE • RELIANCE

DIM SHT 250T-440T TEFC FT MTG STD T & TS SGL EXT XT

TDR: 000000448517

BY: CNBPM

VERSION: 01

REV. LTR: A
REVISED: 14:09:46 11/07/2007

REV. DESC: REMOVING TITLEBLOCK

FILE: \FRAG\00004\526

MTL: —