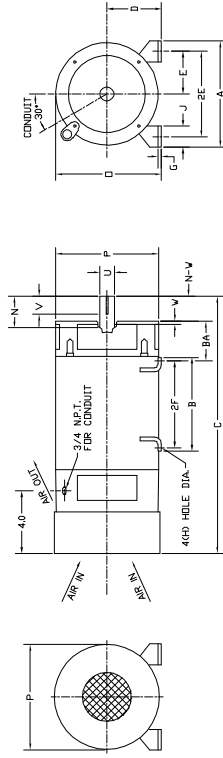


885-1



FRAME	COOL MOUNTING				D.E. SHAFT EXTENSION										DRIVE KEY				FRAME				APPROX. WEIGHT	
	BA	E	F	Z	G	H	J	N	N-W	U	V	W	W-SH	W-LONG	A	B	C	D	O	P	ESCT-F	ESCT-F		
182AT	2.75	2.75	7.00	.38	.406	1.50	2.90	2.77	1.725	2.50	.13	.250	1.38	1.38	8.81	8.75	17.00	4.50	9.36	8.71	.28	.28	99.9	
182BT	2.75	2.75	7.00	.38	.406	1.50	2.90	2.77	1.725	2.50	.13	.250	1.38	1.38	8.81	8.75	20.50	4.50	9.36	8.71	.87	.87	174.3	
182BT	2.75	2.75	11.00	.38	.406	1.50	2.90	2.77	1.725	2.50	.13	.250	1.38	1.38	8.81	8.75	23.36	4.50	9.36	8.71	1.0	1.0	210.3	

- 1) SHAFT DIAMETERS TO 1.500 TOLERANCE +.0000 -0.0005
SHAFT DIAMETERS ABOVE 1.500 TOLERANCE +.0000 -0.0010
SHAFT DIAMETERS ABOVE 1.625 RUNOUT .002 T.I.R. MAX.
SHAFT DIAMETERS ABOVE 1.625 RUNOUT .003 T.I.R. MAX.
- 2) 'D' DIMENSION IS MAX. HUB LENGTH ON SHAFT
'D' DIMENSION TOLERANCE ±.003 ON SHAFT
- 3) 'V' DIMENSION IS MAX. HUB LENGTH ON SHAFT
- 4) CONDUIT BOX CAN BE ROTATED IN 90° STEPS ON ITS OWN AXIS.
- 5) TOTAL WEIGHT OF MOTOR AND FAN COOLED PACKAGE.
- 6) ALL DIMENSIONS NOT NOTED ARE NOMINAL DIMENSIONS CONSULT FACTORY FOR TOLERANCES.

FOR F1 OR F2 CONDUIT BOX
LOCATION SEE SALES ORDER

885-1

CUSTOMER IS RESPONSIBLE FOR DETERMINING THAT BALDOR'S PRODUCT WILL PERFORM SUITABLY IN THE INTENDED APPLICATION.

REV. DESC: REV. "D" DIM TO +.000 -0.060

REV. LTR: A

VERSION: 01

FILE: \RGS\00019\541

MTL: --

TDR: 00000752566

REVISED: 04-30-06/20/2012

BY: RGS/MAS

DIM SHEET
SH. 1 of 1

BALDOR