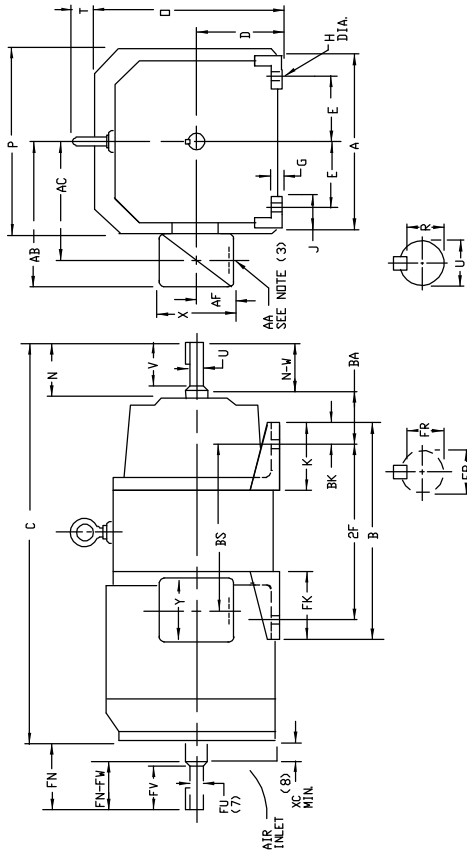


INDUSTRIAL DIRECT CURRENT MOTORS AND GENERATORS - RPM III

COOLING: FAN COOLED

ENCLOSURE: TOTALLY ENCLOSED
MOUNTING: FOOT
METHOD OF DRIVE: COUPLED OR BELTED

FRAMES C180ATZ



DIMENSIONS ARE IN INCHES

FRAME	A	IR(1)	E	G	H	J	O	P	T	BA	K	FK	BK	XC(B)
C181ATZ-C182ATZ	9.00	4.50	3.75	1.31	1.44	1.50	9.50	10.00	1.88	2.75	4.38	4.38	1.50	1.00

FRAME	C	B	BS	2F	N	N-V	UC(2)	V	IR(4)	SD	LGTH	FN	FN-FV	FU(2)	FV	FK(4)	SO	LGTH	U.S.
C181ATZ	27.31	14.00	11.00	12.50	3.00	6.75	11.250	12.50	1.20	1.20	1.75	3.50	2.00	1.250	2.00	.968	2.50	1.38	2.00
C182ATZ	27.31	14.00	11.00	12.50	3.00	6.75	11.250	12.50	1.20	1.20	1.75	3.50	2.00	1.250	2.00	.968	2.50	1.38	2.00
C183ATZ	27.31	14.00	11.00	12.50	3.00	6.75	11.250	12.50	1.20	1.20	1.75	3.50	2.00	1.250	2.00	.968	2.50	1.38	2.00

FRAME	MAX	AK(5)	STANDARD SIZE			PART NUMBER	ONE SIZE LARGER			PART NUMBER	
			AB	AC	AF		AB	AC	AF		
C180ATZ	56	1-1/4 & 1-1/2	18.31	5.75	1.94	705089-1-R	1-1/4 & 1-1/2	18.31	5.75	1.94	705089-1-R

FRAME	MAX	AK(6)	STANDARD SIZE			PART NUMBER	ONE SIZE LARGER			PART NUMBER	
			AB	AC	AF		AB	AC	AF		
C180ATZ	40	1-1/2	9.38	2.50	5.00	705088-2-S	1-1/2	9.38	2.50	5.00	705088-2-S

- (1) *P* DIMENSIONS IN THICKNESS ARE USUALLY REQUIRED FOR COUPLED OR GEARED MACHINES.
- (2) *UP* AND *FV* VARY ±.0005
- (3) *AT* DIMENSIONS FOR BOTTOM MOUNTING
- (4) *P* DIMENSIONS IN THICKNESS ARE USUALLY REQUIRED FOR COUPLED OR GEARED MACHINES.
- (5) *AK* DIMENSIONS FOR BOTTOM MOUNTING
- (6) *AK* DIMENSIONS FOR TOP MOUNTING
- (7) *AK* DIMENSIONS FOR TOP MOUNTING

TERMINAL BOX LOCATED ON OPPOSITE SIDE WHEN F-2, W-1, W-4, W-5, W-7 OR C-1 MOUNTING IS SPECIFIED. BOX LOCATED ON TOP WHEN SPECIFIED.

MOTOR WEIGHT MAY VARY 15% FOR NON-STANDARD RATINGS AND/OR ACCESSORIES.

IF MOUNTING CLEARANCE DETAILS ARE REQUIRED, CONSULT FACTORY.

CUSTOMER IS RESPONSIBLE FOR DETERMINING THAT BALDOR'S PRODUCT WILL PERFORM SUITABLY IN THE INTENDED APPLICATION.

REV. DESC: LOADED TO BUS	VERSION: 00
REV. LTR: -	TDR: 000000577407
FILE: \R66\00015\713	BY: CONNAS
MTL: -	

BALDOR

DIMENSION DRAWING: C180ATZ, TFC, FOOT MFG.