

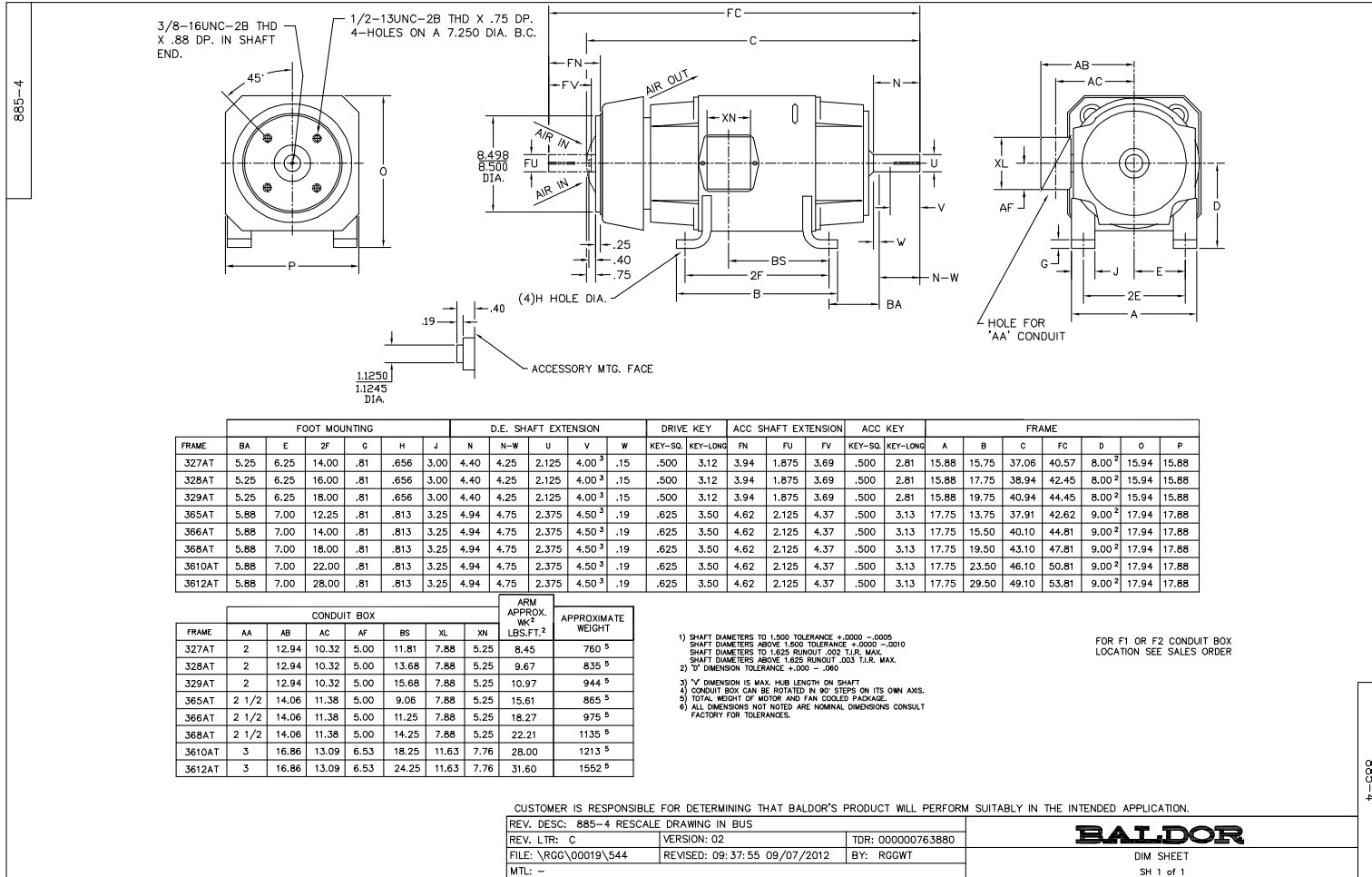
BALDOR® • ***RELIANCE***

Product Information Packet

D2520P

20HP, 1750/2300RPM, DC, 328AT, TEFC, F1

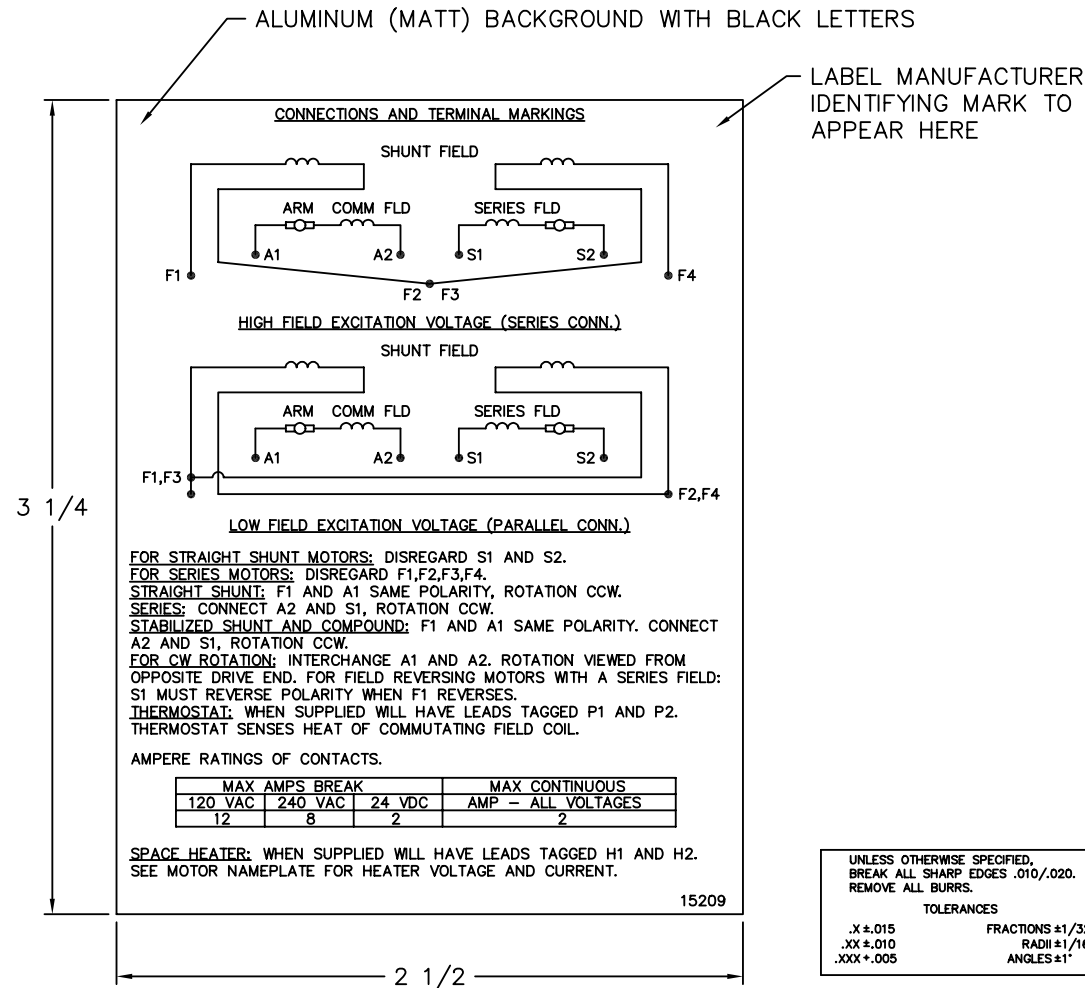
Part Detail			
Type:	DC	Prod. Type:	T
Power Code:	D	Weight:	850
Frame Group:	0328AT	Mounting Pos.:	F1
HP:	20	Enclosure:	TEFC
RPM:	1750/2300	Wound:	STR. SHUNT
Service Factor:	1.0	Arm V:	240
Arm A:	68.80	Field V:	300
Field A:	1.76	Field A Hot:	1.11-.60
Insulation Class:	F	Ambient:	40
Duty:	CONT	DE Bearing:	6211
ODE Bearing:	6210	Brushes:	28610-1
Brush Qty.:			



885-4

885-4

15209



NOTE:
 MATERIAL .005 MINIMUM FULL HARD ALUMINUM DULL FINISH.
 TEMP. RANGE -20°C TO +125°C MAXIMUM.
 FOR INDOOR AND OUTDOOR MOUNTING BACK.
 METAL, PRESSURE SENSITIVE BACK. MUST MEET CSA STANDARD.
 THE CSA IDENTIFYING MARK OF THE LABEL MANUFACTURER MUST APPEAR IN THE UPPER RIGHT HAND CORNER AS INDICATED.

UNLESS OTHERWISE SPECIFIED, BREAK ALL SHARP EDGES .010/.020. REMOVE ALL BURRS.

TOLERANCES

.X ± .015	FRACTIONS ±1/32
.XX ± .010	RADI ±1/16
.XXX ± .005	ANGLES ±1°

MATL: NOTED

REV: G CHANGE ALL "NAMEPLATE" TEXT TO "LABEL"

60Z91

SCALE: - BY: BKW REVISED: 02/19/97
 FILE: CHB00002485 TDR: 0115147

BALDOR ELECTRIC Co.

LABEL, CONNECTIONS AND TERMINAL MARKINGS DC

15209

REL S.O.	FRAME	RATING	RPM	ARM. VOLTS	ARM. AMPS
	328	20.0HP	1750	240	68.8
WINDING TYPE		S.F.	ENCL.	AMB °C/INSUL	DUTY
STRAIGHT SHUNT		1.0	TENV	40/F	CONT
					300
POWER CODE		TYPE	WK 2 (LB-FT ²)	HOT ARM. CIR. RES.	FLD. AMPS@25 °C
D		T	7.377	.114	1.75
					HOT FIELD RES
					269

ARM. CIR. IND. (mh)	FIELD IND. (H)	COOLING AIR (CFM/IN H 20)	TURNS PER COIL SHUNT/SERIES	TEST DATE
2.29	171	-/-	2750/.00000	-

LOAD PERFORMANCE


LOAD	AMPERES	TORQUE IN LB.-FT.	OUTPUT IN HP	RPM	% EFFICIENCY
NO LOAD	2.9	0	0	1775	0
1/4	17	13.5	4.52	1762	73.7
2/4	34	29.5	9.84	1749	83.0
3/4	52	45.4	15.0	1738	85.6
4/4	69	61.0	20.1	1730	86.7
O.L.	103	91.1	29.8	1719	87.2

RPM VS. FIELD AMPS

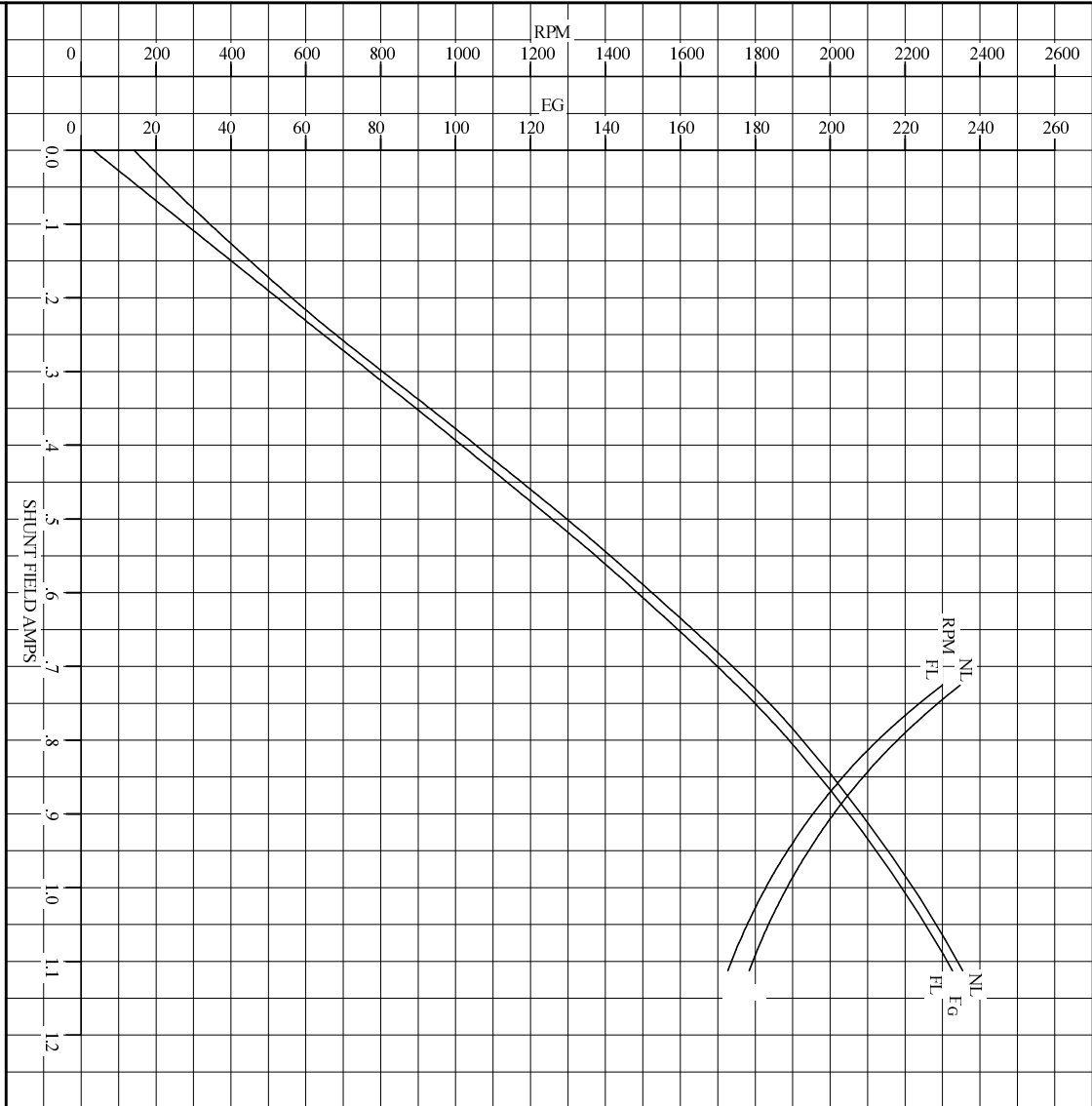
Eg VS. FIELD AMPS

FIELD AMPS	RPM N.L.	RPM F.L.	Eg N.L. @ BASE SPEED	Eg F.L. @ BASE SPEED
1.11	1774	1729	235	232
1.01	1868	1811	224	221
.918	1982	1927	212	208
.822	2137	2083	196	192
.725	2347	2300	178	174

REMARKS: TYPICAL DATA

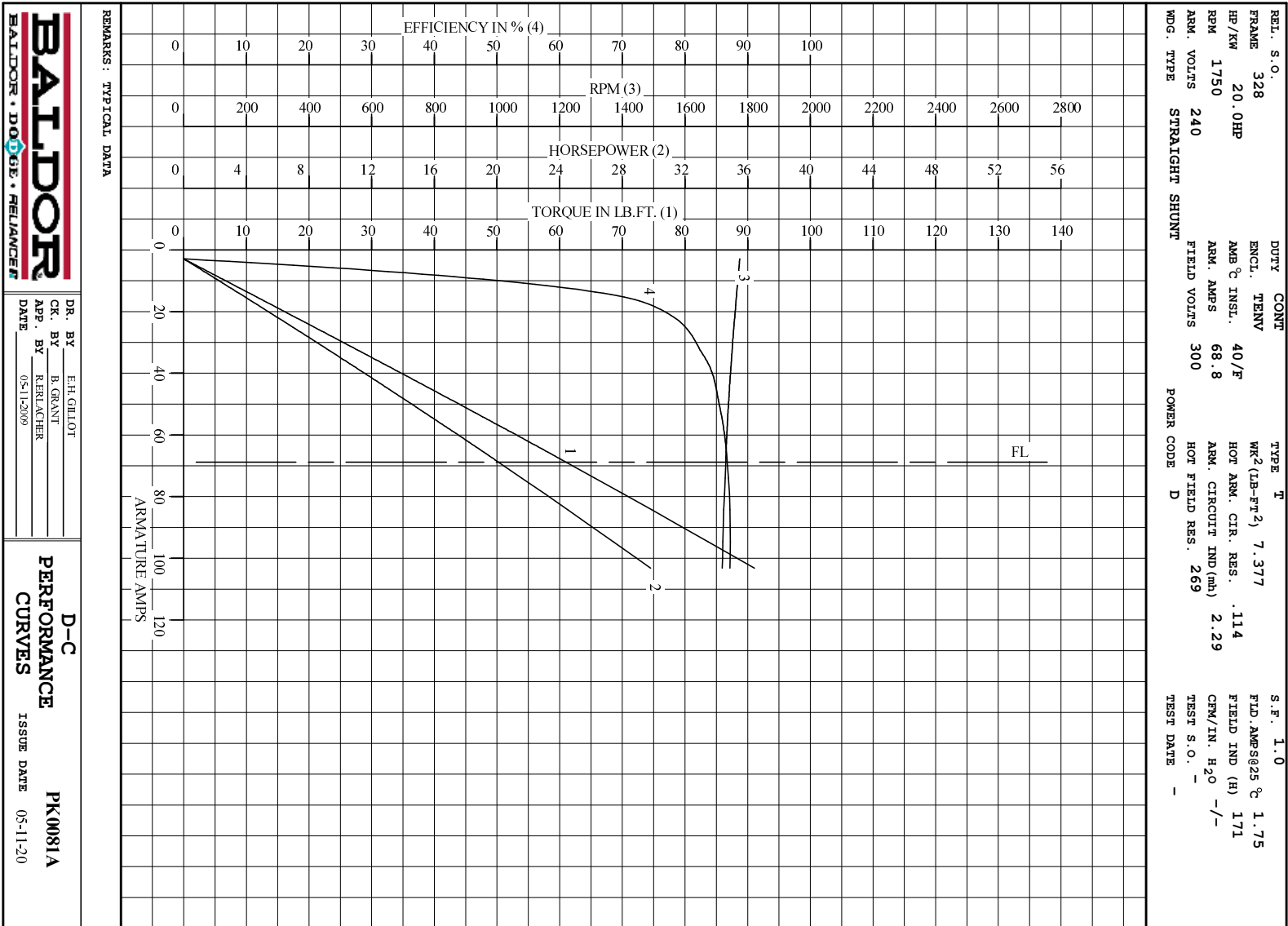
	DR. BY E. H. GILLOT	D-C MOTOR PERFORMANCE DATA DK0081A ISSUE DATE 05-11-2009
	CK. BY B. GRANT	
	APP. BY R. BRANCHER DATE 05-11-2009	

REL. S.O.	FRAME	328	RATING	20.0HP	BASE SPEED	1750	WINDING TYPE	STRAIGHT SHUNT
S.F. 1.0	ENCL. TENV	AMB°C/INSUL 40/F	DUTY CONT		POWER CODE/FORM FACTOR	D	TYPE	T
COOLING AIR (CFM/IN H ² O) 20		R (hot) .0449	T _e .0152	T _m .0314	BASIC RPM 1900	MAX CONT RPM 2300	WINDER RPM	MAX. SAFE
WINDING	VOLTS	RESISTANCE		CURRENT		INDUCANCE	TURNS PER COIL	
ARM CIRCUIT	240	25°C .0825	HOT .114	25°C	HOT	2.30 mH		
SERIES S1-S2	-	-	-	-	-	-	-	-
SHUNT F1-F2	300	171	270	1.76	1.11	172	H	2750



REMARKS: TYPICAL DATA
CURVES VALID FOR NAMEPLATE SPEED RANGE ONLY

BALDOR BALDOR • DOUG • RELIANCE	DR. BY	E.H.GILLOT	D-C
	CK. BY	B.GRANT	
	APP. BY	R.BRANCHER	APPLICATION DATA
	DATE	05-11-2009	
			ISSUE DATE 05-11-2009



DR. BY E.H.GILLOT
 CK. BY B.GRANT
 APP. BY R.RAUCHER
 DATE 05-11-2009

D-C PERFORMANCE CURVES
 ISSUE DATE 05-11-20
PK0081A