

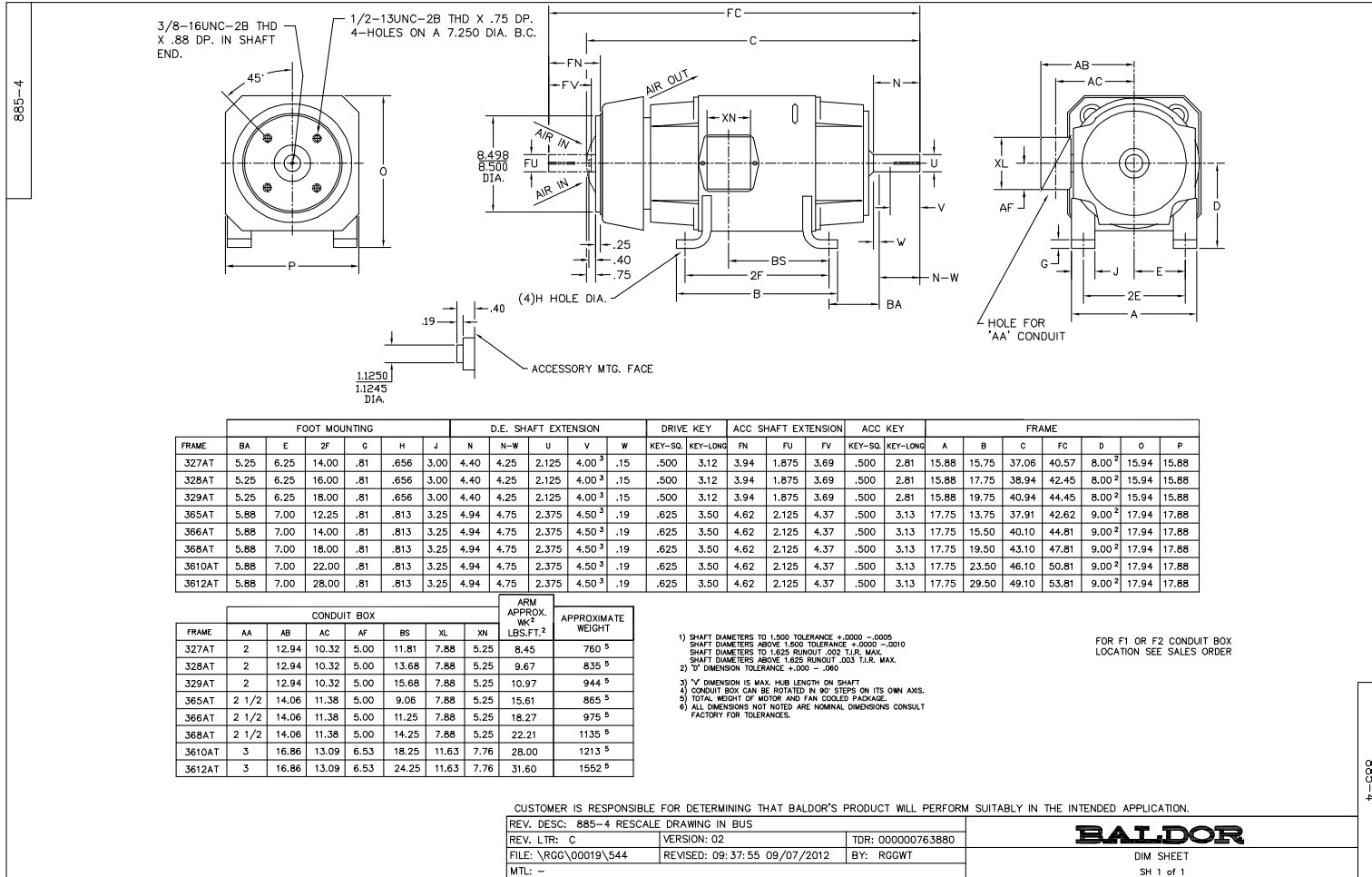
BALDOR® • ***RELIANCE***

Product Information Packet

D2525P

25HP, 1750/2300RPM, DC, 328AT, TEFC, F1

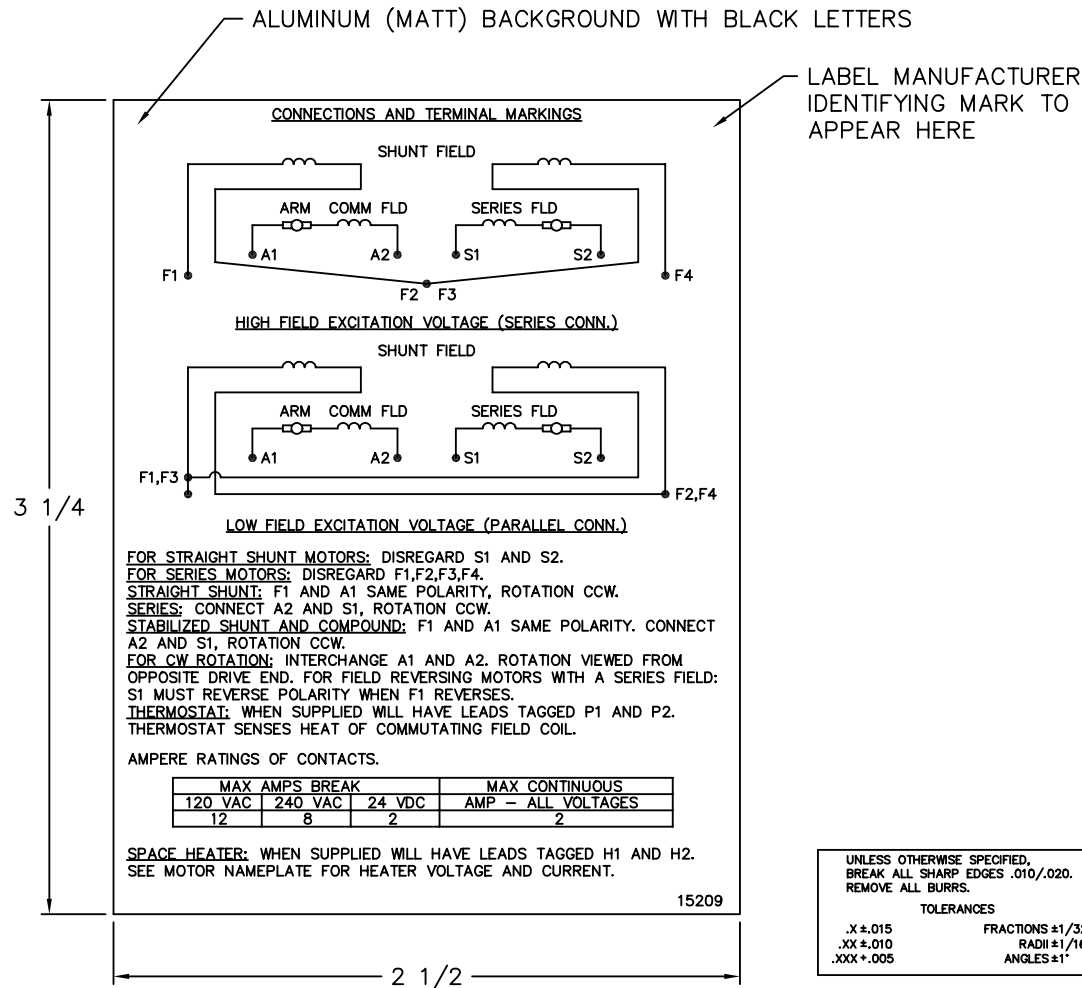
Part Detail			
Type:	DC	Prod. Type:	T
Power Code:	D	Weight:	872
Frame Group:	0328AT	Mounting Pos.:	F1
HP:	25	Enclosure:	TEFC
RPM:	1750/2300	Wound:	STR. SHUNT
Service Factor:	1.0	Arm V:	240
Arm A:	84.80	Field V:	300
Field A:	1.76	Field A Hot:	1.11-1.20/1.11-
Insulation Class:	F	Ambient:	40
Duty:	CONT	DE Bearing:	6211
ODE Bearing:	6210	Brushes:	28610-1
Brush Qty.:			



885-4

885-4

15209



NOTE:
 MATERIAL .005 MINIMUM FULL HARD ALUMINUM DULL FINISH.
 TEMP. RANGE -20°C TO +125°C MAXIMUM.
 FOR INDOOR AND OUTDOOR MOUNTING BACK.
 METAL, PRESSURE SENSITIVE BACK. MUST MEET CSA STANDARD.
 THE CSA IDENTIFYING MARK OF THE LABEL MANUFACTURER MUST APPEAR IN THE UPPER RIGHT HAND CORNER AS INDICATED.

UNLESS OTHERWISE SPECIFIED, BREAK ALL SHARP EDGES .010/.020. REMOVE ALL BURRS.

TOLERANCES

.X ± .015	FRACTIONS ±1/32
.XX ± .010	RADI ±1/16
.XXX ± .005	ANGLES ±1°

MATL: NOTED			
REV:	G	CHANGE ALL "NAMEPLATE" TEXT TO "LABEL"	
60291	SCALE: -	BY: BKW	REVISED: 02/19/97
	FILE: CHB00002485	TDR: 0115147	

BALDOR ELECTRIC Co.

LABEL, CONNECTIONS AND TERMINAL MARKINGS DC

15209

REL S.O.	FRAME	RATING	RPM	ARM. VOLTS	ARM. AMPS
	328	25.0HP	1750	240	84.8
WINDING TYPE		S.F.	ENCL.	AMB °C/INSUL	DUTY
STRAIGHT SHUNT		1.0	TEAO	40/F	CONT
					300
POWER CODE	TYPE	WK 2 (LB-FT ²)	HOT ARM. CIR. RES.	FLD. AMPS@25 °C	HOT FIELD RES
D	T	7.377	.104	1.75	269
ARM. CIR. IND. (mh)	FIELD IND. (H)	COOLING AIR (CFM/IN H 20)		TURNS PER COIL SHUNT/SERIES	TEST DATE
2.29	171	-/-		2750/.00000	-

LOAD PERFORMANCE


LOAD	AMPERES	TORQUE IN LB.-FT.	OUTPUT IN HP	RPM	% EFFICIENCY
NO LOAD	2.6	0	0	1775	0
1/4	21	17.5	5.88	1762	78.9
2/4	42	37.3	12.4	1750	85.7
3/4	64	56.7	18.8	1741	87.6
4/4	85	75.7	25.0	1736	88.5
O.L.	127	111	36.9	1741	88.1

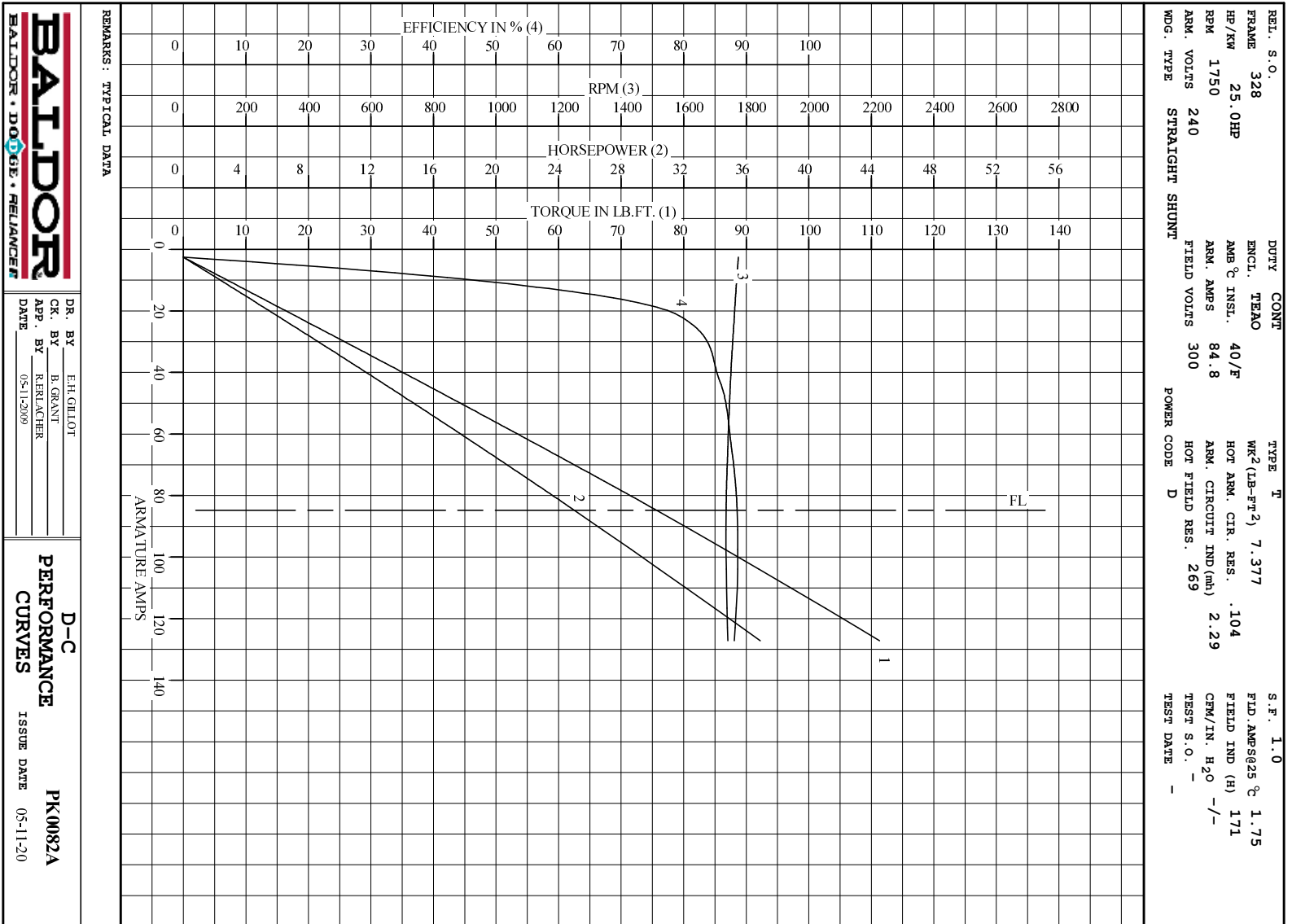
RPM VS. FIELD AMPS

Eg VS. FIELD AMPS

FIELD AMPS	RPM N.L.	RPM F.L.	Eg N.L. @ BASE SPEED	Eg F.L. @ BASE SPEED
1.11	1774	1735	235	231
1.01	1867	1818	225	220
.921	1979	1933	212	207
.826	2129	2088	197	192
.730	2333	2300	179	174

REMARKS: TYPICAL DATA

	DR. BY E. H. GILLOT	D-C MOTOR PERFORMANCE DATA DK0082A ISSUE DATE 05-11-2009
	CK. BY B. GRANT APP. BY R. BRANCHER DATE 05-11-2009	



DR. BY E.H.GILLOT
 CK. BY B.GRANT
 APP. BY R.RAUCHER
 DATE 05-11-2009

D-C
PERFORMANCE
CURVES ISSUE DATE 05-11-20
PK0082A