

Grounding 0.5-6 mm<sup>2</sup> / 20-10 AWG

Main terminal box  
1.118"

A

B

C

D

E

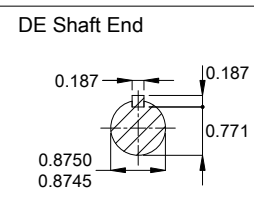
With drip cover

Color Munsell N 1 matte black

Painting plan 207N

Mounting MARKET W-6/V18R(D)

Mounting W-6/V18R(D)



2 HP 02 Poles 60 Hz										A	
Scale 1 : 4											
HYBRISUSER										00	
ECM	LOC	SUMMARY OF MODIFICATIONS					EXECUTED	CHECKED	RELEASED	DATE	VER
EXECUTED	HYBRISUSER	THREE PH. MOTOR ROLLED STEEL NEMA PREM. EFF.					PREVIEW				
CHECKED		FRAME 143/5TC IP21 ODP					WDD	00			
RELEASED							SHEET		1 / 1		
REL. DATE											