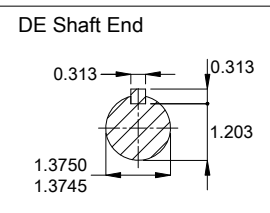


Shaft material - stainless steel AISI 304
 Painting plan 205E
 Mounting MARKET F-1/B3R(D)
 Mounting F-1/B3R(D)



| | | | | | | | | | | | |
|-----------------------|------------|--|--|--|--|---------|----------|---------|----------|-------------|-----|
| 7.5 HP 04 Poles 60 Hz | | | | | | | | | | A | |
| Scale 2 : 13 | | | | | | | | | | | |
| HYBRISUSER | | | | | | | | | | 00 | |
| ECM | LOC | SUMMARY OF MODIFICATIONS | | | | | EXECUTED | CHECKED | RELEASED | DATE | VER |
| EXECUTED | HYBRISUSER | THREE PH. MOTOR ROLLED STEEL HYDROWASH NEMA PREM EFF | | | | | EXECUTED | CHECKED | RELEASED | DATE | VER |
| CHECKED | | FRAME 213/5T IP56 TEFC | | | | | EXECUTED | CHECKED | RELEASED | DATE | VER |
| RELEASED | | | | | | | EXECUTED | CHECKED | RELEASED | DATE | VER |
| REL. DATE | | | | | | | EXECUTED | CHECKED | RELEASED | DATE | VER |
| | | | | | | PREVIEW | | WDD 00 | | SHEET 1 / 1 | |
| | | | | | | WEG | | | | | |