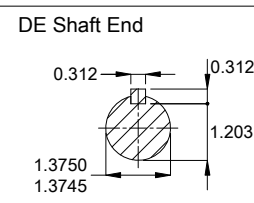


| | | | | | | | | | | |
|--|--|-----------|------------|--|--|----------|---------|----------|------|-----|
| | | | | 2 HP 08 Poles 60 Hz | | A | | | | |
| | | | | Scale | | 2 : 13 | | | | |
| | | | | HYBRISUSER | | 00 | | | | |
| | | ECM | LOC | SUMMARY OF MODIFICATIONS | | EXECUTED | CHECKED | RELEASED | DATE | VER |
| | | EXECUTED | HYBRISUSER | THREE PH. MOTOR IEEE 841 W22 NEMA PREM. EFF. | | PREVIEW | | | | |
| | | CHECKED | | FRAME 213/5T IP56 TEFC | | WDD | | 00 | | |
| | | RELEASED | | | | SHEET | | 1 / 1 | | |
| | | REL. DATE | | | | | | | | |



- Grease outlet on endshields
- Color RAL 5009
- Painting plan 202E
- Mounting NEMA F-1
- Mounting B3R(D)