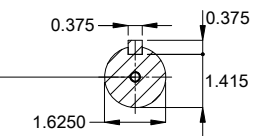


DE Shaft End



DUNC 5/8"-11 WEG WPR-7339

- With drip cover
- Color RAL 5009
- Painting plan 203A
- Mounting NEMA W-6
- Mounting V1

50 HP 06 Poles 60 Hz

A

Scale 1 : 11

ECM		LOC	SUMMARY OF MODIFICATIONS		HYBRISUSER					00
EXECUTED	HYBRISUSER		THREE PH. MOTOR W22 P. BASE NEMA PREM. EFF.		EXECUTED	CHECKED	RELEASED	DATE	VER	
CHECKED			FRAME 364/5HP IP55 TEFC							
RELEASED										
REL. DATE										

PREVIEW

WDD 00

SHEET 1 / 1

