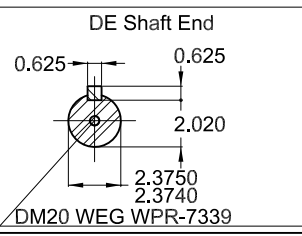


DE roller bearing
Slinger ring supplied loose
Nameplate with API 661 marking
Grease outlet according to IEEE841
Slinger ring on shaft end

Shaft locking device
Shaft material - AISI/SAE 4140
Color RAL 5009
Painting plan 222E
Mounting NEMA W-8
Mounting V6R(D)



40 HP 06 Poles 60 Hz						A
WEG HOUSE ACCOUNT MOTORS						
422070811/1 INITIAL ISSUE			CLEITONGS	CLEITONGS	KITZBERGER	16.11.2023 00
ECM	LOC	SUMMARY OF MODIFICATIONS	EXECUTED	CHECKED	RELEASED	DATE VER
EXECUTED	CLEITONGS	THREE PH. MOTOR IEEE 841 W22 NEMA PREM. EFF.				
CHECKED	CLEITONGS	FRAME 364/5T IP56 TEFC				
RELEASED	KITZBERGER					
REL. DATE	16.11.2023	WMO Jaragua do Sul	Product Engineering			
			1457040541		WDD 00	
			SHEET 1 / 1		1	

CERTIFIED WEG MOTORES - Certified document. Not subject to changes. Dimensions in inches XME A3 10011616016-00