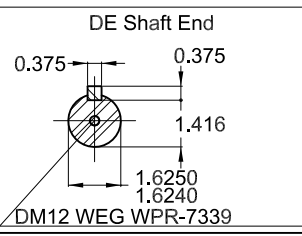


Grounding for leads 5.2-25 mm² / 10-4 AWG

DE roller bearing
Slinger ring supplied loose
Nameplate with API 661 marking
Grease outlet according to IEEE841
Slinger ring on shaft end
Shaft locking device
Shaft material - AISI/SAE 4140
Color RAL 5009
Painting plan 222E
Mounting NEMA W-8
Mounting V6R(D)



7.5 HP 06 Poles 60 Hz						A
WEG HOUSE ACCOUNT MOTORS						
422070813/0 INITIAL ISSUE				CLEITONGS	CLEITONGS	KITZBERGER
ECM	LOC	SUMMARY OF MODIFICATIONS		EXECUTED	CHECKED	RELEASED
EXECUTED	CLEITONGS	THREE PH. MOTOR IEEE 841 W22 NEMA PREM. EFF.		1457046284		
CHECKED	CLEITONGS	FRAME 254/6T IP56 TEFC		WDD	00	
RELEASED	KITZBERGER					
REL. DATE	16.11.2023	WMO	Jaragua do Sul			

CERTIFIED WEG MOTORES - Certified document. Not subject to changes. Dimensions in inches XME A3