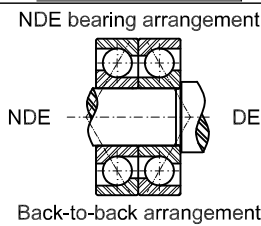
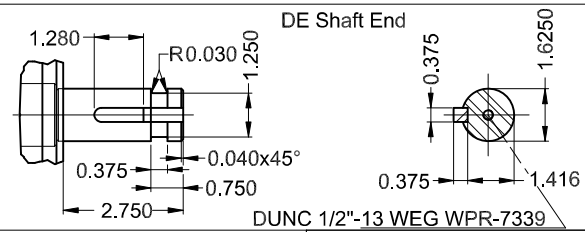
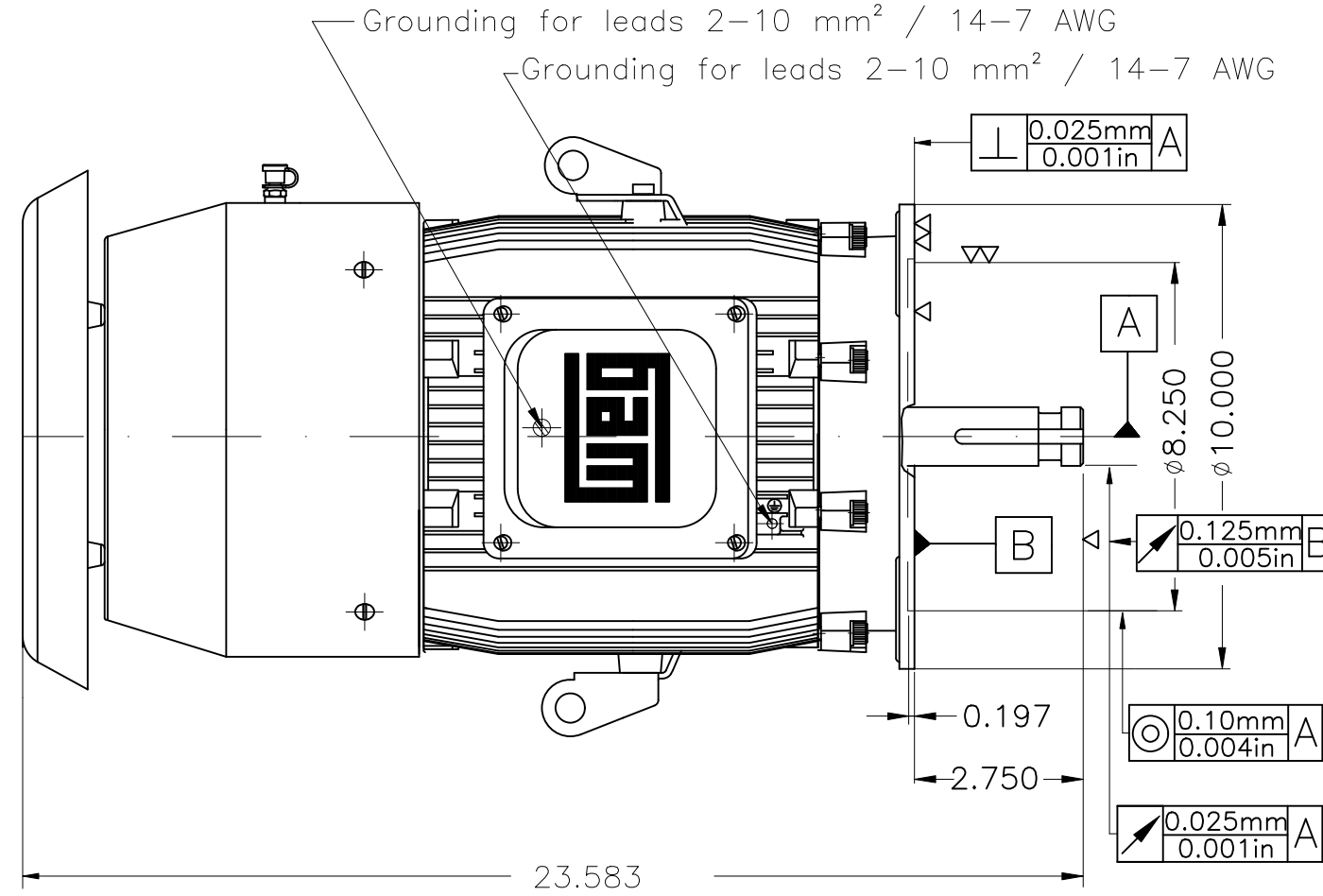
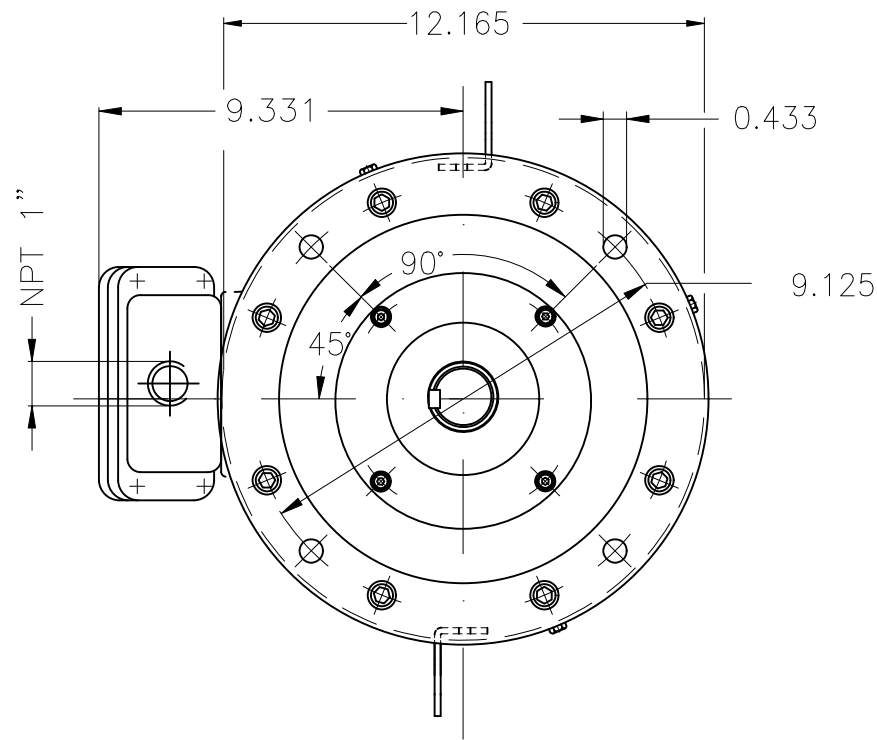


ATENÇÃO/ATTENTION
 MOTOR DEVE SER LIGADO APENAS NA POSIÇÃO VERTICAL
 MOTOR MUST BE ENERGIZED ONLY IN THE VERTICAL POSITION



- Type "T" threaded drain plug
- Permatex on the screws
- Stainless Steel Grease fitting
- Tropicalized internal painting according to IEEE841
- Grease outlet according to IEEE841
- Aluminum fan
- Fan coated with epoxy coating
- Sealing - INPRO/SEAL
- Tirrol oil applied on endshields fittings
- Color RAL 5009
- Painting plan 202E
- Mounting V1

Bearing		Lubricant	
DE	6309	MOBIL POLYREX EM	
NDE	7306BECB	MOBIL POLYREX EM	

7.5 HP 02 Poles 60 Hz A

WEG ELECTRIC CORPORATION - WEG

ALTERADO CONFORME 422500623		CRANGHETTI	RPATERNOLI	RPATERNOLI	06.02.2025	02		
DOCUMENTO NOVO: 422500568		CRANGHETTI	RPATERNOLI	GUILHERMEMC	09.12.2024	01		
ECM	LOC	SUMMARY OF MODIFICATIONS		EXECUTED	CHECKED	RELEASED	DATE	VER
EXECUTED	PIRWUSER	THREE PH. MOTOR IN LINE EXTRA THRUST NEMA PREM. EFF.						
CHECKED	MCRUZ	FRAME 213LP IP55 TEFC						
RELEASED	MCRUZ							
REL. DATE	17.09.2024	WMO	JARAGUA DO SUL	[Pesquisa e Desenv. de Produto]	SHEET		1 / 1	

1591507943
 WDD 02