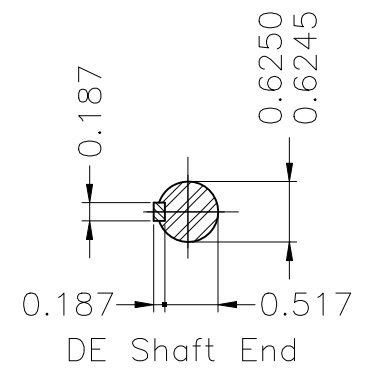


Power	Polarity	L	C
0.5 HP	2P	5.906	9.646
0.75HP	2P	6.299	10.039
1 HP	2P	7.087	10.827
1.5 HP	2P	8.268	12.008
0.5 HP	4P	6.693	10.433
0.75HP	4P	7.087	10.827
1 HP	4P	7.874	11.614
1 HP	6P	8.268	12.008



- Shaft material - stainless steel AISI 304
- Permatex sealed endshields
- 2RS NDE ball bearing
- Tropicalized internal painting
- 2RS DE ball bearing
- Painting plan 205E
- Mounting B34D

ECM	LOC	SUMMARY OF MODIFICATIONS	EXECUTED	CHECKED	RELEASED	DATE	VER	
		New drawing		ELIZABETH	RAMIREZC	RIOMIGUEL	19.12.2025	02
		New drawing		RAMIREZC	FMONROY	FMONROY	17.07.2025	01
EXECUTED	RAMIREZC	THREE PH. MOTOR ROLLED STEEL HYDROWASH PREM. EFF. FRAME 56C IP56 TENV			<b>1618070179</b> WDD   02			
CHECKED	MORALESR							
RELEASED	FMONROY							
REL. DATE	17.01.2025							
WEG		HUEHUETOCA	[Ventas Exportacion]	SHEET		1 / 1		

PRELIMINARY DOCUMENT - Not to be used for installation purposes. Dimensions in inches XME A3