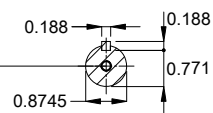


DE Shaft End



EUNC 3/8"-16 WEG WPR-7309

Shaft material - stainless steel AISI 304
 Painting plan 205E
 Mounting MARKET F-1/B34R(D)
 Mounting B34D

3 HP 02 Poles 60 Hz

A

Scale 1 : 6

| | | | | | | | | | | |
|-----------|------------|--|--|--|--|------------|---------|----------|------|-----|
| | | | | | | HYBRISUSER | | | | 00 |
| ECM | LOC | SUMMARY OF MODIFICATIONS | | | | EXECUTED | CHECKED | RELEASED | DATE | VER |
| EXECUTED | HYBRISUSER | THREE PH. MOTOR ROLLED STEEL NEMA PREM. EFF. | | | | | | | | |
| CHECKED | | FRAME 182/4JM IP56 TEFC | | | | | | | | |
| RELEASED | | | | | | | | | | |
| REL. DATE | | | | | | | | | | |
| | | | | | | PREVIEW | | | | |
| | | | | | | WDD | 00 | | | |
| | | | | | | SHEET | 1 / 1 | | | |

