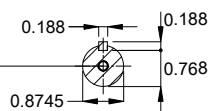


DE Shaft End



EUNC 3/8"-16 WEG WPR-7309

Shaft material - stainless steel AISI 304
 Painting plan 205E
 Mounting MARKET F-1/B34R(D)
 Mounting B34D

10 HP 02 Poles 60 Hz

A

Scale 2 : 13

ECM		LOC	SUMMARY OF MODIFICATIONS		HYBRISUSER	00
EXECUTED	HYBRISUSER		THREE PH. MOTOR ROLLED STEEL NEMA PREM. EFF.	EXECUTED	CHECKED	RELEASED
CHECKED			FRAME 213/5JM IP56 TEFC	RELEASED	DATE	VER
RELEASED						
REL. DATE						

PREVIEW

WDD 00

SHEET 1 / 1

