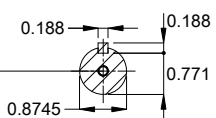


DE Shaft End



EUNC 3/8"-16 WEG WPR-7309

Shaft material - stainless steel AISI 304
 Painting plan 205E
 Mounting MARKET F-1/B34R(D)
 Mounting B34D

1.5 HP 04 Poles 60 Hz

A

Scale 1 : 5

ECM		LOC	SUMMARY OF MODIFICATIONS		HYBRISUSER					00
EXECUTED	HYBRISUSER		THREE PH. MOTOR ROLLED STEEL NEMA PREM. EFF.		EXECUTED	CHECKED	RELEASED	DATE	VER	
CHECKED			FRAME 143/5JM IP56 TEFC							
RELEASED										
REL. DATE										

PREVIEW

WDD 00

SHEET 1 / 1

