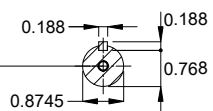


DE Shaft End



EUNC 3/8"-16 WEG WPR-7309

Shaft material - stainless steel AISI 304
 Painting plan 205E
 Mounting MARKET F-1/B34R(D)
 Mounting B34D

7.5 HP 04 Poles 60 Hz

A

Scale 2 : 13

ECM	LOC	SUMMARY OF MODIFICATIONS	EXECUTED	CHECKED	RELEASED	DATE	VER
EXECUTED	HYBRISUSER	THREE PH. MOTOR ROLLED STEEL NEMA PREM. EFF.					
CHECKED		FRAME 213/5JM IP56 TEFC					
RELEASED							
REL. DATE							

PREVIEW

WDD 00

SHEET 1 / 1

