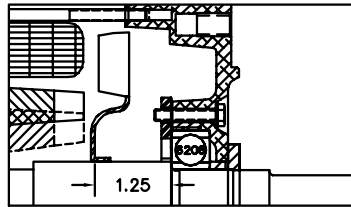


PULLEY END DETAIL



CUSTOMER IS RESPONSIBLE FOR DETERMINING THAT BALDOR'S PRODUCT WILL PERFORM SUITABLY IN THE INTENDED APPLICATION.

REV. DESC: REVISE DESCRIPTION & UPDATE LAYOUT DIMS		
REV. LTR: Q	VERSION: 02	TDR: 000000577339
FILE: \AAA\00009\670	REVISED: 04:33:32 01/25/2011	BY: ENBRAMO
MTL: -		

BALDOR

STD HORZ 143-5JM TEFC 35M

SH 1 of 1