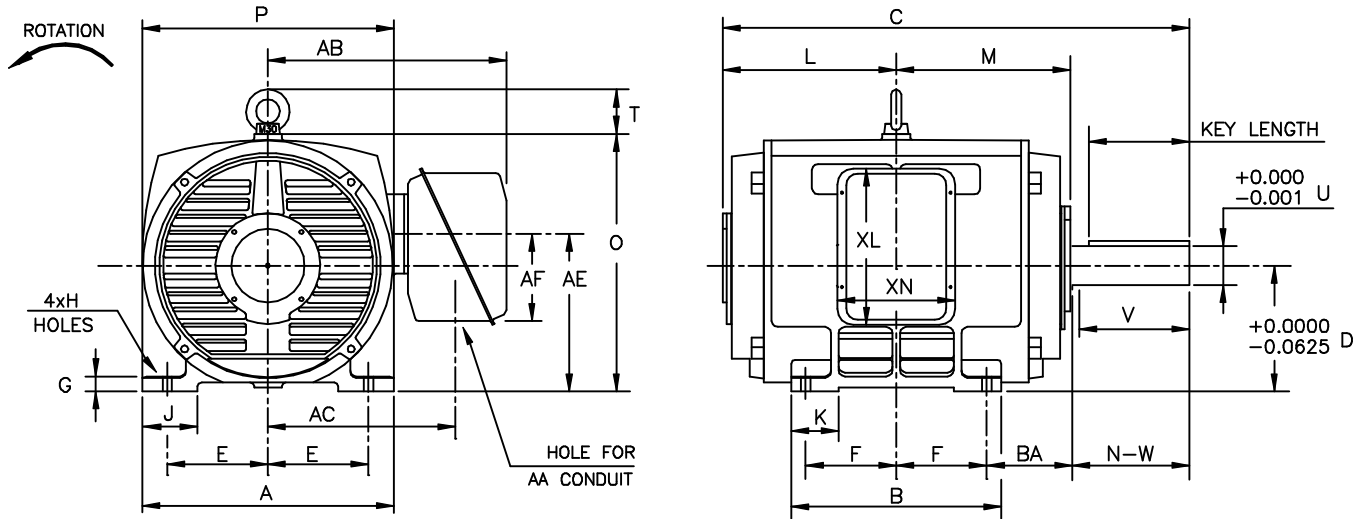


INDEX	MDSL0081-07
REV. LEVEL	2
SHEET	1 OF 1

**TOSHIBA/HOUSTON**

**DRIP-PROOF  
HORIZONTAL FOOT-MOUNTED  
2300/4160V STOCK MOTORS**

**Fr. 505-509  
4-8 POLE  
BELT DRIVE**



UNITS: INCHES

FRAME SIZE	MOUNTING				CONDUIT BOX						
	E	F	H	BA	AA	AB	AC	AE	AF	XL	XN
505UZ	10.00	9.00	0.94	8.50	4.00	23.75	18.62	15.64	8.66	15.50	11.73
507UZ	10.00	11.00	0.94	8.50	4.00	23.75	18.62	15.64	8.66	15.50	11.73
509UZ	10.00	14.00	0.94	8.50	4.00	22.81	17.68	15.64	8.66	15.50	11.73

FRAME SIZE	MOTOR DIMENSIONS											
	A	B	C	D	G	J	K	L	M	O	P	T
505UZ	25.00	20.87	46.34	12.50	1.48	5.51	4.72	17.22	17.30	25.58	25.00	4.41
507UZ	25.00	24.80	50.34	12.50	1.48	5.51	4.72	19.22	19.30	25.58	25.00	4.41
509UZ	25.00	30.79	56.34	12.50	1.48	5.51	4.72	22.22	22.30	25.58	25.00	4.41

FRAME SIZE	SHAFT EXTENSION			KEYWAY		KEY LENGTH	BEARINGS		APPROX. WEIGHT
	N-W	V	U	WIDTH	DEPTH		LS	OS	
505UZ	11.62	11.38	3.875	1.000	0.500	10.00	NU322	6320	lbs.
507UZ	11.62	11.38	5.250	1.250	0.625	10.00	NU2228	6320	lbs.
509UZ	11.62	11.38	5.250	1.250	0.625	10.00	NU2228	6320	lbs.

ALL DATA SUBJECT TO CHANGE WITHOUT NOTICE.  
FOR CONSTRUCTION USE ONLY CERTIFIED DATA.

NOTES:

1. DIMENSION V REPRESENTS LENGTH OF STRAIGHT PART OF SHAFT
2. CONDUIT BOX WILL BE MOUNTED ON OPPOSITE SIDE UPON REQUEST. CONDUIT BOX MAY BE ROTATED SO THAT THE OPENING MAY FACE UP, DOWN, OR EITHER SIDE.

FOR REFERENCE     PRELIMINARY     CERTIFIED

For \_\_\_\_\_  
 Your Order No: \_\_\_\_\_  
 Toshiba Order No: \_\_\_\_\_  
 Frame \_\_\_\_\_ HP \_\_\_\_\_ RPM (F.L.) \_\_\_\_\_  
 Amp (F.L.) \_\_\_\_\_ Volts \_\_\_\_\_ Hz. \_\_\_\_\_ Ph. \_\_\_\_\_  
 Model No: \_\_\_\_\_ Type \_\_\_\_\_ Form \_\_\_\_\_ SF \_\_\_\_\_  
 Remarks: \_\_\_\_\_

Per \_\_\_\_\_ Date \_\_\_\_\_

**TYPICAL MOTOR PERFORMANCE DATA**

Model: F4506VLF3JF

HP	kW	Pole	FL RPM	Frame	Voltage	Hz	Phase	FL Amps
450	336	6	1180	509UZ	460	60	3	523
Enclosure	IP	Ins. Class	S.F.	Duty	NEMA Nom. Eff.	NEMA Design	kVA Code	Ambient (°C)
ODP	22			CONT	95.5	-	G	

Load	HP	kW	Amperes	Efficiency (%)	Power Factor (%)
Full Load	450	335.6	523.0	95.5	84.7
¾ Load	337.50	251.7	403.9	95.5	81.9
½ Load	225.00	167.8	298.7	95.0	74.2
¼ Load	112.50	83.9	215.4	92.0	53.1
No Load			168.0		2.8
Locked Rotor			3405.10		36.2

Torque				Rotor wk <sup>2</sup>
Full Load (lb-ft)	Locked Rotor (% FLT)	Pull Up (% FLT)	Break Down (% FLT)	Inertia (lb-ft <sup>2</sup> )
2003	225	175	280	181.29

Safe Stall Time(s)		Sound Pressure dB(A) @ 1M	Bearings*		Approx. Motor Weight (lbs)
Cold	Hot		DE	NDE	
9.2	4.5	-	NU2228C3	6320C3	

\*Bearings are the only recommended spare part(s).

**Motor Options:**  
Product Family:ODP & WP-I  
Mounting:Footed,Shaft:UZ Shaft

Customer	
Customer PO	
Sales Order	
Project #	

Tag:

All characteristics are average expected values.

**TOSHIBA INTERNATIONAL CORPORATION · HOUSTON, TEXAS U.S.A.**

Engineering	bammen	Doc. Written By	D. Suarez	Doc.# / Rev	MPCF-1119 / 0
Engr. Date	5/12/2014	Doc. Approved By	M. Campbell	Doc. Issued	6/8/2011

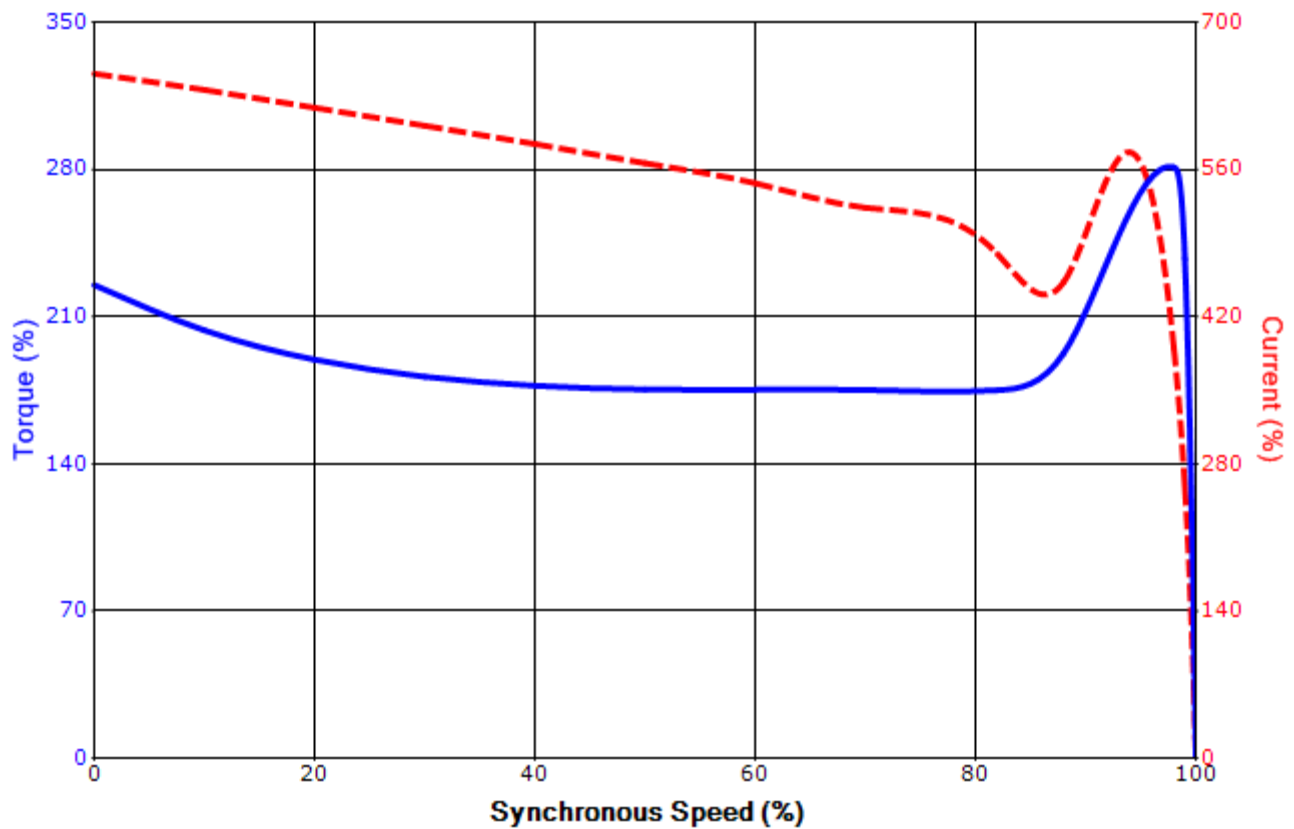
Issued Date	4/23/2015	Transmit #	
Issued By	dschoeck	Issued Rev	

**SPEED TORQUE/CURRENT CURVE**

Model: F4506VLF3JF

HP	kW	Pole	FL RPM	Frame	Voltage	Hz	Phase	FL Amps
450	336	6	1180	509UZ	460	60	3	523
Enclosure	IP	Ins. Class	S.F.	Duty	NEMA Nom. Eff.	NEMA Design	kVA Code	Ambient (°C)
ODP	22			CONT	95.5	-	G	
Locked Rotor Amps	Rotor wk <sup>2</sup> Inertia (lb-ft <sup>2</sup> )	Torque						Break Down (%)
		Full Load (lb-ft)	Locked Rotor (%)	Pull Up (%)				
3405.10	181.29	2003	225	175		280		

**Design Values**



Customer		wk <sup>2</sup> Load Inertia (lb-ft <sup>2</sup> )	-
Customer PO		Load Type	-
Sales Order		Voltage (%)	100
Project #		Accel. Time	-

Tag: \_\_\_\_\_

All characteristics are average expected values.

**TOSHIBA INTERNATIONAL CORPORATION · HOUSTON, TEXAS U.S.A.**

Engineering	bmammen	Doc. Written By	D. Suarez	Doc.# / Rev	MPCF-1121 / 0
Engr. Date	5/12/2014	Doc. Approved By	M. Campbell	Doc. Issued	6/8/2011