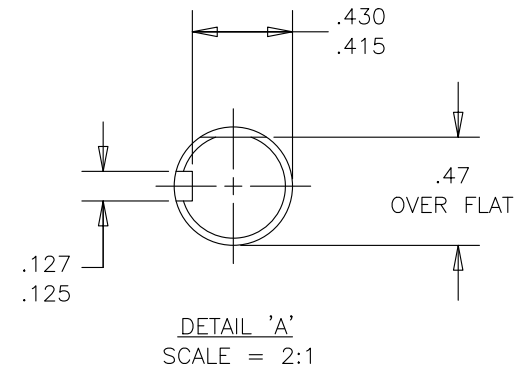


NOTES:

- 1. NAMEPLATE & WARNING LABEL TO BE READ WHEN HOLDING UNIT WITH GEARHEAD UP.
- 2. PAINT SPECIFICATION: BLACK (ENTIRE MOTOR)
- 3. MOTOR ROTATION: C.W.D.E. & C.C.W.D.E.
- 4. WAVE SPRING WASHER AND BEARING COVER PLATE TO BE APPLIED TO THE BRUSH END BELL SIDE OF MOTOR.
- 5. .125 X 1.00 KEY (14671729) IS TO BE TAPED TO THE OUTPUT SHAFT.

WEG CATALOG NUMBER	SIZE	OVERALL LENGTH	INPUT H.P.	OUTPUT H.P.	TORQUE (IN-LBS)	SPEED (R.P.M.)	VOLTS (D.C.)	F.F.	AMPS	RATIO
GH1019	M2000	6.804/6.854	0.02	0.005	100	3	90	1.4	0.15	488:1
GH1018		6.804/6.854	0.03	0.01	160	5	90	1.4	0.25	339:1
GH1017		7.359/7.311	0.09	0.05	150	19	90	1.4	0.72	172:1
GH1016		7.359/7.311	0.14	0.09	150	37	90	1.05	1.2	102:1
GH1015		7.359/7.311	0.16	0.09	83	71	90	1.05	1.29	52:1
GH1014		7.359/7.311	0.14	0.09	42	139	90	1.05	1.19	24:1
GH1013		7.359/7.311	0.08	0.04	20	139	90	1.4	0.63	16:1
GH1012		7.359/7.311	0.1	0.06	36	100	90	1.4	0.79	31:1
GH1011		7.359/7.311	0.08	0.05	40	71	90	1.4	0.64	31:1
GH1010		7.359/7.311	0.09	0.05	56	60	90	1.4	0.77	52:1
GH1009		7.359/7.311	0.08	0.04	74	37	90	1.4	0.67	79:1
GH1008		7.359/7.311	0.09	0.05	100	30	90	1.4	0.72	79:1
GH1007		6.804/6.854	0.06	0.03	100	20	90	1.4	0.5	102:1
GH1006		7.359/7.311	0.06	0.03	20	90	90	1.4	0.46	16:1
GH1005		7.359/7.311	0.06	0.03	30	65	90	1.4	0.46	31:1
GH1004		7.359/7.311	0.06	0.03	50	40	90	1.4	0.5	52:1
GH1003		7.359/7.311	0.04	0.02	100	10	90	1.4	0.3	172:1
GH1002		6.804/6.854	0.03	0.01	100	6	90	1.4	0.23	339:1
GH1001	6.804/6.854	0.02	0.01	100	4	90	1.4	0.19	488:1	



UNLESS OTHERWISE SPECIFIED: TOLERANCE - DECIMAL		ECM	LOC	SUMMARY OF MODIFICATIONS			EXECUTED	CHECKED	RELEASED	DATE	VER		
.XX	±.015	EXECUTED	COGINSKI	STOCK MODELS FOR M2000 GIL-100	STOCK MODELS FOR M2000 GIL-100	10011533381	000	07	/	14.01.2025	07		
.XXX	±.005	CHECKED	JTOGNERI									18.12.2024	06
.XXXX	±.002	RELEASED	JTOGNERI										
ANGLE	±1/2°	REL DT	18.10.2023	WBL	MCHENRY	ENGINEERING	SHEET	/					

