

A

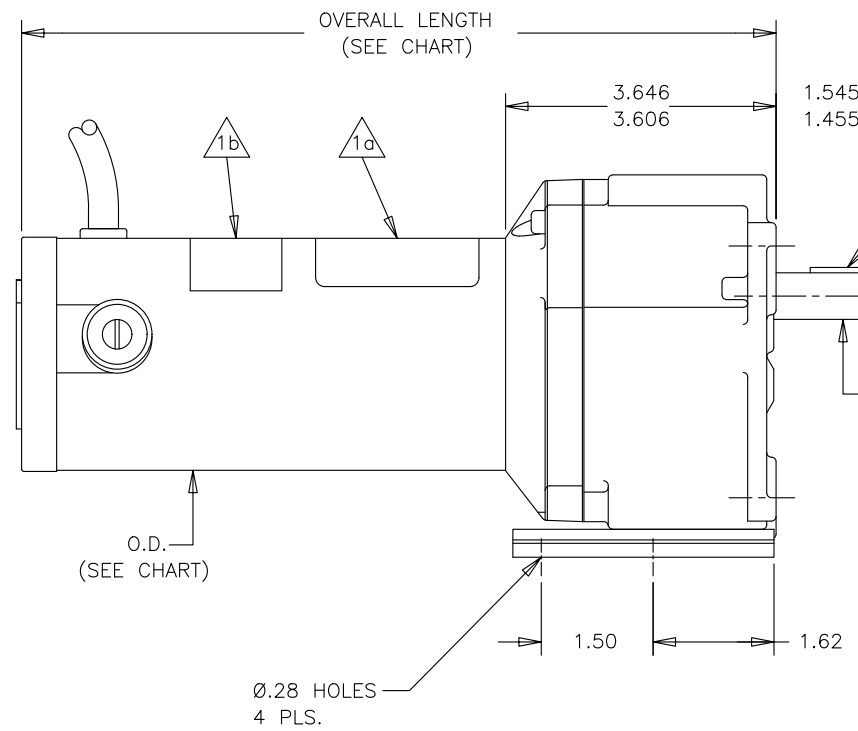
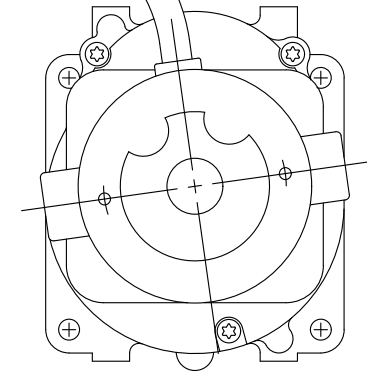
B

C

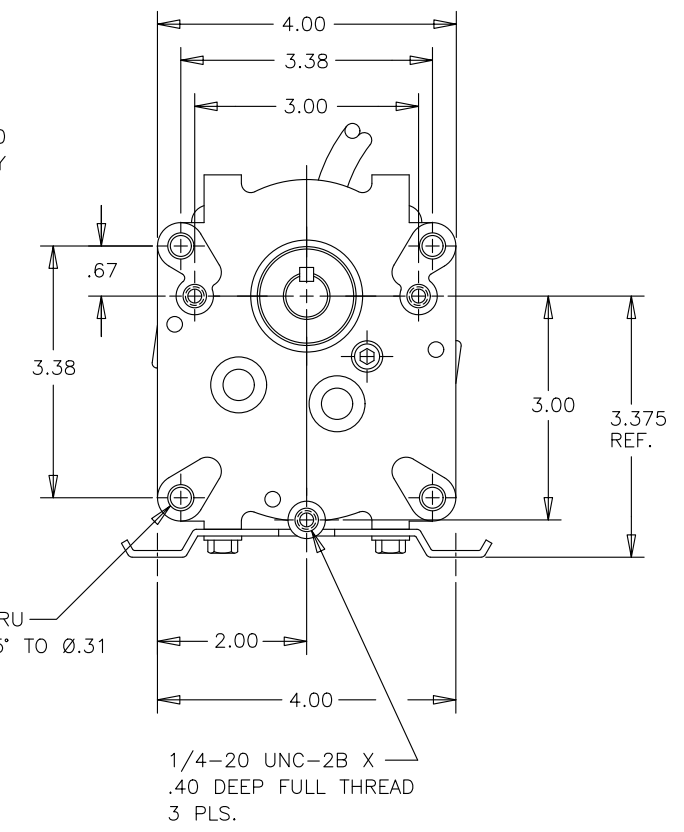
D

E

36.00 MIN. OUT OF YOKE
SJTOW 14/3
WHITE, BLACK & GREEN
.50/.25 LEAD STRIP
1.00 JACKET STRIP



5
.187 X 1.00
SQUARE KEY



NOTES:

- 1 NAMEPLATE AND WARNING LABEL TO BE READ WHEN HOLDING MOTOR WITH GEARHEAD UP.
 - a. NAMEPLATE
 - b. WARNING LABEL
- 2. GEARMOTOR ROTATION: C.W.D.E & C.C.W.D.E.
- 3. PAINT SPECIFICATION: BLACK
- 4. WAVE SPING WASHER AND BEARING COVER PLATE TO BE APPLIED TO THE BRUSH END BELL SIDE OF THE MOTOR.
- 5 KEY (14653195) TO BE TAPED TO THE OUTPUT SHAFT.

WEG CAT. NO.	SIZE	O.D.	OVERALL LENGTH	H.P.	TORQUE	SPEED	VOLTS	F.F.	AMPS	RATIO
GL2010	M4300	3.13	10.081/10.006	0.2	159 IN-LBS	57 R.P.M.	12 D.C.	1.05	15.0	30:1
GL2009		3.13	10.081/10.006	0.2	185 IN-LBS	50 R.P.M.	12 D.C.	1.05	15.4	34:1
GL2008		3.13	10.081/10.006	0.2	280 IN-LBS	31 R.P.M.	12 D.C.	1.05	14.7	58:1
GL2007		3.13	10.081/10.006	0.2	280 IN-LBS	24 R.P.M.	12 D.C.	1.05	11.5	77:1
GL2006		3.13	10.081/10.006	0.2	74 IN-LBS	145 R.P.M.	12 D.C.	1.05	18.5	11:1
GL2005		3.13	10.081/10.006	0.2	135 IN-LBS	80 R.P.M.	12 D.C.	1.05	18.5	20:1
GL2004		3.13	10.081/10.006	0.13	47 IN-LBS	162 R.P.M.	12 D.C.	1.0	12.6	11:1
GL2003		3.13	10.081/10.006	0.13	113 IN-LBS	61 R.P.M.	12 D.C.	1.0	11.4	30:1
GL2002		3.13	10.081/10.006	0.13	220 IN-LBS	31 R.P.M.	12 D.C.	1.0	12.0	58:1
GL2001		3.13	10.081/10.006	0.05	290 IN-LBS	6 R.P.M.	12 D.C.	1.0	4.6	343:1

UNLESS OTHERWISE SPECIFIED: TOLERANCE - DECIMAL		GROSS WEIGHT		NET WEIGHT		SCALE			1:1	
.XX	±.015	500002867446	04	REVISED TEXT STYLE		COGINSKI	RAFAELAMS	RAFAELAMS	19.05.2025	04
.XXX	±.005	500002679067	03	REVISED NOTE #1 & LEADERS		COGINSKI	RAFAELAMS	RAFAELAMS	10.07.2024	03
.XXXX	±.002	ECM	LOC	SUMMARY OF MODIFICATIONS			EXECUTED	CHECKED	RELEASED	DATE VER
ANGLE	±1/2°	REL DT	06.10.2023	WBL	McHENRY	ENGINEERING			SHEET /	

10011498573

000 | 04



UNCONTROLLED COPY

RELEASED

ZME A3