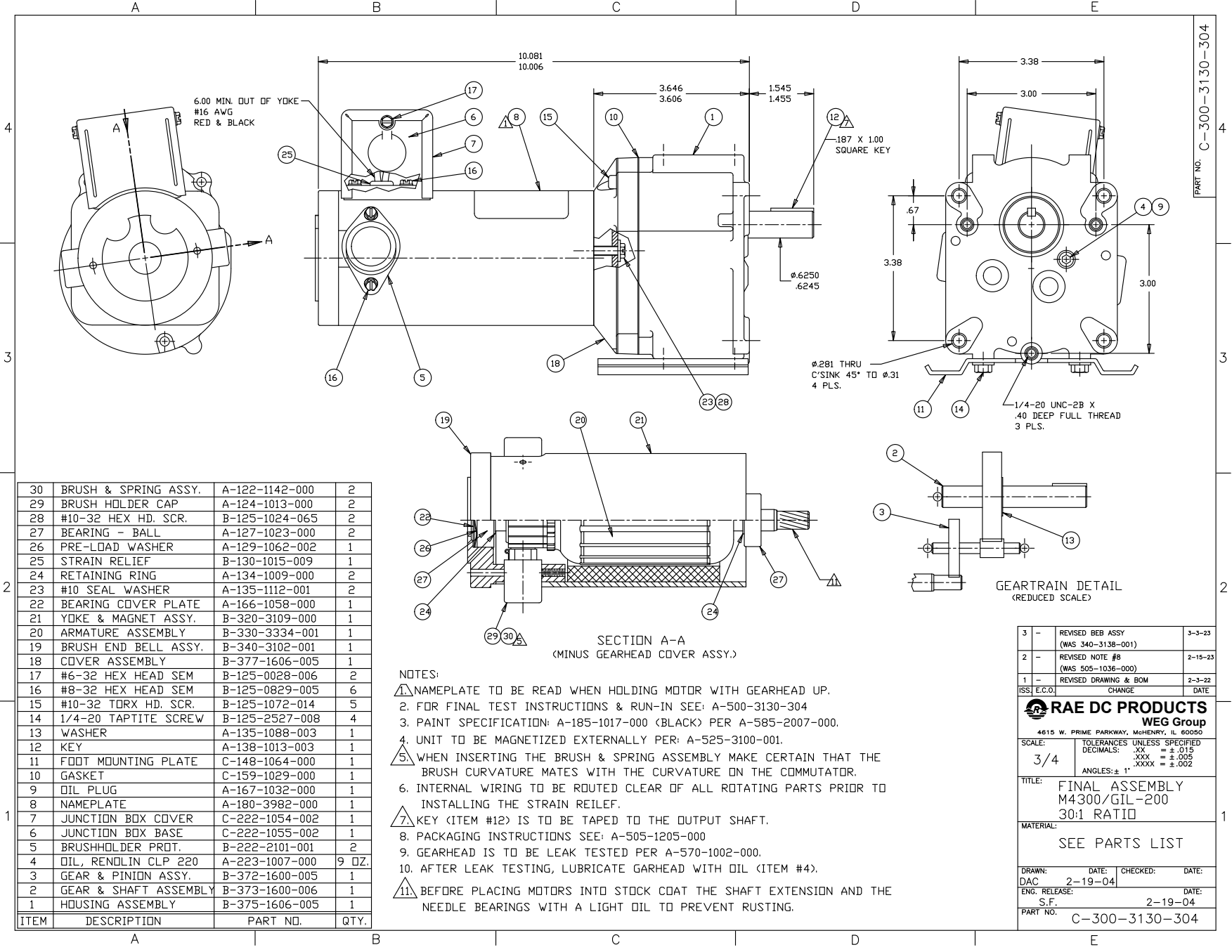


PART NO. C-300-3130-304



30	BRUSH & SPRING ASSY.	A-122-1142-000	2
29	BRUSH HOLDER CAP	A-124-1013-000	2
28	#10-32 HEX HD. SCR.	B-125-1024-065	2
27	BEARING - BALL	A-127-1023-000	2
26	PRE-LOAD WASHER	A-129-1062-002	1
25	STRAIN RELIEF	B-130-1015-009	1
24	RETAINING RING	A-134-1009-000	2
23	#10 SEAL WASHER	A-135-1112-001	2
22	BEARING COVER PLATE	A-166-1058-000	1
21	YOKE & MAGNET ASSY.	B-320-3109-000	1
20	ARMATURE ASSEMBLY	B-330-3334-001	1
19	BRUSH END BELL ASSY.	B-340-3102-001	1
18	COVER ASSEMBLY	B-377-1606-005	1
17	#6-32 HEX HEAD SEM	B-125-0028-006	2
16	#8-32 HEX HEAD SEM	B-125-0829-005	6
15	#10-32 TORX HD. SCR.	B-125-1072-014	5
14	1/4-20 TAPTITE SCREW	B-125-2527-008	4
13	WASHER	A-135-1088-003	1
12	KEY	A-138-1013-003	1
11	FOOT MOUNTING PLATE	C-148-1064-000	1
10	GASKET	C-159-1029-000	1
9	OIL PLUG	A-167-1032-000	1
8	NAMEPLATE	A-180-3982-000	1
7	JUNCTION BOX COVER	C-222-1054-002	1
6	JUNCTION BOX BASE	C-222-1055-002	1
5	BRUSHHOLDER PROT.	B-222-2101-001	2
4	OIL, RENDLIN CLP 220	A-223-1007-000	9 OZ.
3	GEAR & PINION ASSY.	B-372-1600-005	1
2	GEAR & SHAFT ASSEMBLY	B-373-1600-006	1
1	HOUSING ASSEMBLY	B-375-1606-005	1
ITEM	DESCRIPTION	PART NO.	QTY.

- NOTES:
- NAMEPLATE TO BE READ WHEN HOLDING MOTOR WITH GEARHEAD UP.
 - FOR FINAL TEST INSTRUCTIONS & RUN-IN SEE: A-500-3130-304
 - PAINT SPECIFICATION: A-185-1017-000 (BLACK) PER A-585-2007-000.
 - UNIT TO BE MAGNETIZED EXTERNALLY PER: A-525-3100-001.
 - WHEN INSERTING THE BRUSH & SPRING ASSEMBLY MAKE CERTAIN THAT THE BRUSH CURVATURE MATES WITH THE CURVATURE ON THE COMMUTATOR.
 - INTERNAL WIRING TO BE ROUTED CLEAR OF ALL ROTATING PARTS PRIOR TO INSTALLING THE STRAIN RELIEF.
 - KEY (ITEM #12) IS TO BE TAPED TO THE OUTPUT SHAFT.
 - PACKAGING INSTRUCTIONS SEE: A-505-1205-000
 - GEARHEAD IS TO BE LEAK TESTED PER A-570-1002-000.
 - AFTER LEAK TESTING, LUBRICATE GARHEAD WITH OIL (ITEM #4).
 - BEFORE PLACING MOTORS INTO STOCK COAT THE SHAFT EXTENSION AND THE NEEDLE BEARINGS WITH A LIGHT OIL TO PREVENT RUSTING.

3	REVISED BEB ASSY (WAS 340-3138-001)	3-3-23	
2	REVISED NOTE #8 (WAS 505-1036-000)	2-15-23	
1	REVISED DRAWING & BOM	2-3-22	
ISS: E.C.O.	CHANGE	DATE	
RAE DC PRODUCTS WEG Group			
4615 W. PRIME PARKWAY, McHENRY, IL 60050			
SCALE:	TOLERANCES UNLESS SPECIFIED		
3/4	DIMENSIONS: .XX = ± .015		
	DECIMALS: .XXX = ± .005		
	ANGLES: ± .1°		
TITLE:	FINAL ASSEMBLY M4300/GIL-200 30:1 RATIO		
MATERIAL:	SEE PARTS LIST		
DRAWN:	DATE:	CHECKED:	DATE:
DAC	2-19-04		
ENG. RELEASE:	S.F.	DATE:	
PART NO.	C-300-3130-304		