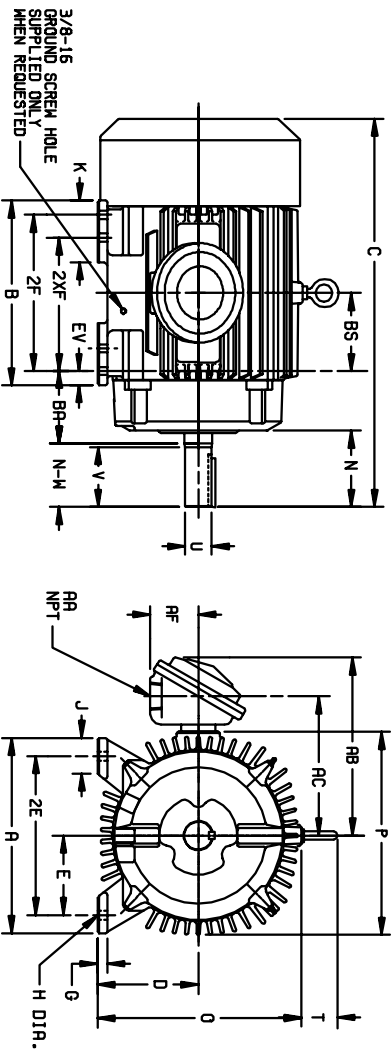


DUTY MASTER ALTERNATING CURRENT MOTORS

ENCLOSURE: TOTALLY ENCLOSED
 UNDERWRITERS LISTED MOTOR
 MOUNTING: FOOT

SQUIRREL-CAGE INDUCTION
 COOLING: FAN COOLED

FRAMES 250T THRU 440T



DIMENSIONS ARE IN INCHES; SEE SHEET 2 FOR DIMENSIONS IN MILLIMETERS

FRAME	A	D(2)	E	G	H	J	K	O	P	T	XP TERMINAL BOX						BA	EA	EV
											AA	AB	AC	AD	AE	AF			
254T-256T	12.50	6.25	5.00	.75	.56	2.50	---	13.25	13.25	2.44	1-1/4	12.38	9.69	3.38	4.25	1.00			
284T-286TS	13.75	7.00	5.50	.75	.86	2.50	---	14.75	14.88	2.44	1-1/2	13.25	10.56	3.38	4.75	1.00			
324T-326TS	15.50	8.00	6.25	.88	.89	2.75	4.50	16.69	17.00	2.44	2	17.06	12.50	4.25	5.25	1.38			
364T-366TS	17.00	9.00	7.00	.88	.69	2.75	4.00	18.50	19.50	2.94	3	18.81	14.25	4.25	5.88	1.38			
404T-405TS	19.00	10.00	8.00	1.12	.81	3.25	4.62	21.31	22.50	2.94	3	20.50	15.88	4.25	6.62	1.13			
444T-449TS	21.00	11.00	9.00	1.12	.81	3.25	5.25	23.38	25.25	3.25	3	26.25	20.38	6.00	7.50	1.25			

FRAME	C	BS	B	ZF	2XF	N	N-W(5)	SHAFT AND KEY						WEIGHT LBS. (5)
								U(3)	V	SQ.	LGTH.			
254T	24.56	5.00	12.00	---	8.25	4.06	4.00	1.625	3.75	.375	2.88	335		
284T	24.56	5.00	12.00	10.00	---	4.06	4.00	1.625	3.75	.375	2.88	345		
284T	27.44	5.50	13.00	---	9.50	4.69	4.62	1.875	4.38	.500	3.25	495		
284TS	26.06	5.50	13.00	---	9.50	3.31	3.25	1.625	3.00	.375	1.88	495		
286T	27.44	5.50	13.00	11.00	---	4.69	4.62	1.875	4.38	.500	3.25	510		
286TS	26.06	5.50	13.00	11.00	---	3.31	3.25	1.625	3.00	.375	1.88	510		
324T	30.44	6.00	14.75	---	10.50	5.62	5.25	2.125	5.00	.500	3.88	610		
324TS	28.94	6.00	14.75	12.00	---	5.62	5.25	2.125	5.00	.500	3.88	650		
326T	30.44	6.00	14.75	12.00	---	4.12	3.75	1.875	3.50	.500	2.00	650		
326TS	28.94	6.00	14.75	12.00	---	4.12	3.75	1.875	3.50	.500	2.00	650		
364T	33.44	6.12	15.00	---	11.25	6.00	5.88	2.375	5.62	.625	4.25	910		
364TS	31.31	6.12	15.00	12.25	---	3.88	3.75	1.875	3.50	.500	2.00	904		
365T	33.44	6.12	15.00	12.25	---	6.00	5.88	2.375	5.62	.625	4.25	950		
365TS	31.31	6.12	15.00	12.25	---	3.88	3.75	1.875	3.50	.500	2.00	944		
404T	38.31	6.88	16.00	---	12.25	7.50	7.25	2.875	7.00	.750	5.62	1300		
404TS	35.31	6.88	16.00	---	12.25	4.50	4.25	2.125	4.00	.500	2.75	1291		
405T	38.31	6.88	16.00	13.75	---	7.50	7.25	2.875	7.00	.750	5.62	1335		
405TS	35.31	6.88	16.00	13.75	---	4.50	4.25	2.125	4.00	.500	2.75	1326		
444T	44.62	8.25	19.00	---	14.50	8.94	8.50	3.375	8.25	.875	6.88	1770		
444TS	40.88	8.25	19.00	---	14.50	5.19	4.75	2.375	4.50	.825	3.00	1754		
445T	44.62	8.25	19.00	16.50	---	8.94	8.50	3.375	8.25	.875	6.88	1860		
445TS	40.88	8.25	19.00	16.50	---	5.19	4.75	2.375	4.50	.825	3.00	1844		

- (1) SPECIAL DIMENSIONS APPLYING TO THIS ORDER ON THIS LINE.
- (2) "D" VARIES
 250T - 320T +.00, -.03.
 360T - 440T +.00, -.06.
 HP TO 1.625 DIA. +.0000, -.0005
- (3) "U" VARIES
 1.625 AND LARGER +.000, -.001.
- (4) ALL FRAMES HAVE EIGHT MOUNTING HOLES FOR DUAL MOUNTING.
- (5) MOTOR WEIGHTS MAY VARY BY 15% DEPENDING UPON RATING.
- (6) "N-W" VARIES +.00, -.25.

CONDUIT BOX LOCATED ON OPPOSITE SIDE WHEN F-2-W-1, W-4-W-5-W-7, OR C-1 MOUNTING IS SPECIFIED.
 IF MOUNTING CLEARANCE DETAILS ARE REQUIRED, CONSULT FACTORY.
 MAXIMUM PERMISSIBLE SHAFT RUNOUT WHEN MEASURED AT END OF STD. SHAFT EXTENSION IS .002 T.I.R. UP TO AND INCLUDING 1.625 DIA. AND .003 T.I.R. 1.625 DIA. TO 5 INCH DIA.

FRAME- _____ TYPE- _____ CERTIFIED FOR- _____
 ORDER- _____ ITEM- _____ HP- _____ RPM- _____ PH- _____ HZ _____ VOLTS _____
 SALES ORDER- _____ APPROVED BY- _____ DATE _____

CUSTOMER IS RESPONSIBLE FOR DETERMINING THAT BALDOR'S PRODUCT WILL PERFORM SUITABLY IN THE INTENDED APPLICATION.

REV. DESC: ASSIGNED TO BUSLOAD	VERSION: 01	TDR: 000000467918
REV. LTR: A	REVISED: 13:58:48 06/17/2008	BY: RAGRHX
FILE: \RAG\00006\851		
MTL: -		

Baldor • Dodge • Reliance

DIM SHT FCXP FT 250-440T

SH 1 of 1