



A Regal Brand

Catalog # : LM24111

Product Type: AC MOTOR

Description: 1..1800.S56.ODP.230/460.3.60....1.15...SRD4S1T61

Model: SRD4S1T61

Stock: Stock

Quote: Price:

Date: 10/14/2014



A Regal Brand

Catalog # : LM24111

Product Type: AC MOTOR

Description: 1..1800.S56.ODP.230/460.3.60....1.15...SRD4S1T61

Model: SRD4S1T61

Stock: Stock

Engineering Data

Volts	230	Volts	460	Volts	
F.L. Amps	3.4	F.L. Amps	1.7	F.L. Amps	
S. F Amps	3.8	S. F Amps	1.9	S. F Amps	

RPM	1800	Hertz	60	TYPE	TS
HP	1	Duty	CONTINUOUS		
KW	0.75				
Frame	S56	Serv. Factor	1.15	Phase	3
Max Amb	40	Design	B	Code	L
Insul Class	B	Protection	NOT	Therm.Prot.	
Eff 100%	76.5	Eff 75%		PF	
UL	V-INS, CONST UL REC	CSA	Yes	Bearing OPE	203
CC Number		CE		Bearing PE	203
Load Type		Inverter Type		Speed Range	UNK

Motor Wt.	25 LB	Enclosure	DP	Lubrication	STANDARD
Nameplate		Mounting	RIGID	Rotation	REV
Assembly		Shaft Dia.		Ext. Diag.	A-EE7308-LN
Cust Part No		Outline	A-SS75081LN-750	Ext. Diag2	
Packaging	B	Outline Dash No		Winding	TE48416
Carton Label				GROUP :	3
Iris		Paint	UNK	Test Card	

Form Factor		RMS Amps		Const TorqueSpeed Range
Torque		Peak		
AB Code		Peak@DegC		
Resistance				
Connection				

Rework Status

Rework TYPE

Hazardous Loc  
Explosion Proof  
Class  
Class

NONE

Temp Op Code  
GROUP  
GROUP

Brake Motors  
FORCE  
VDC  
ADC

Brake Coil OHMs @25 C

Performance  
Torque UOM  
Torque  
CURRENT (amps)  
Efficiency (%)  
PowerFactor

Inertia (WK<sup>2</sup>)

Load Curve Data @60 HzVolts,1Horsepower

Load	Amps	KW	RPM	Torque	Eff	PF	Rise By Resis	Frame Rise
0.0	1.2	0.18	1800	0.0	0.0	18.0	0.0	-
0.25	1.3	0.36	1780	0.74	51.5	35.5	0.0	-
0.5	1.4	0.56	1770	1.5	67.0	51.5	0.0	-
0.75	1.5	0.76	1755	2.2	73.5	63.5	0.0	-
1.0	1.7	0.98	1725	3.0	75.5	72.5	55.0	-
1.15	1.9	1.1	1715	3.5	76.5	78.0	65.0	-
1.25	2.0	1.3	1705	3.8	76.5	81.0	85.0	-
1.5	2.2	1.5	1695	4.7	76.5	83.5	0.0	-
1.75	2.5	1.7	1670	5.5	75.0	86.5	0.0	-

SOURCE: CALCULATED GROUP: 3

Load Curve Data @60HzVolts,1Horsepower

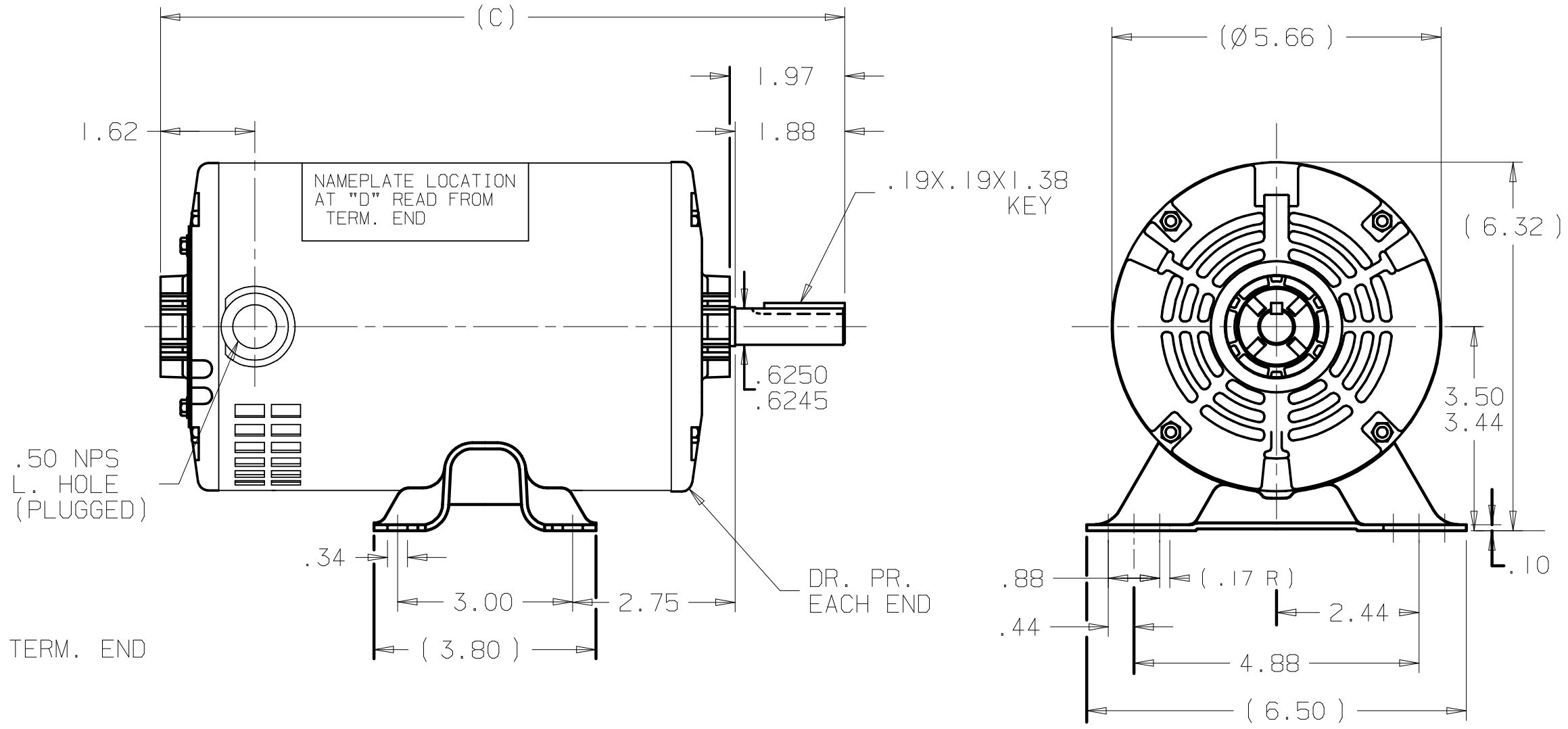
Load	Amps	KW	RPM	Torque	Eff	PF	Rise By Resis	Frame Rise
------	------	----	-----	--------	-----	----	---------------	------------

Load Curve Data Not Available

Quote: Price:

Date: 10/14/2014

A-SS75081LN



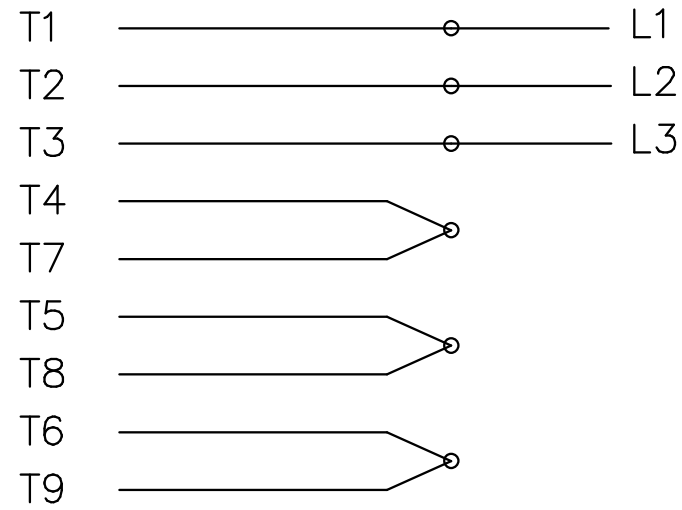
DASH		C	DASH		C	DASH		C
12-6-90 -600		9.97	-700		10.97	-775		11.72
-625		10.22	-725		11.22	-800		11.97
-650		10.47	-750		11.47			

				✓ UNLESS OTHERWISE SPECIFIED DIMENSIONS ARE IN INCHES TOL. ON XX±.02 XXX±.005 XXXX±.0005 ANGLES± 7°30"				
				MAX. SURFACE ROUGHNESS UNLESS OTHERWISE NOTED	DRAWN BY TRB 07-27-1999		CHKD BY ML 07-27-1999	
			FINISH	MATERIAL		APPD BY GK 07-27-1999		
REV	DATE	CHANGE	NAME	PART NAME OUTLINE 56 FR. - DP.			DRWG NO A-SS75081LN	
				PURCHASED		CADD FILE NO. SS75081LN		

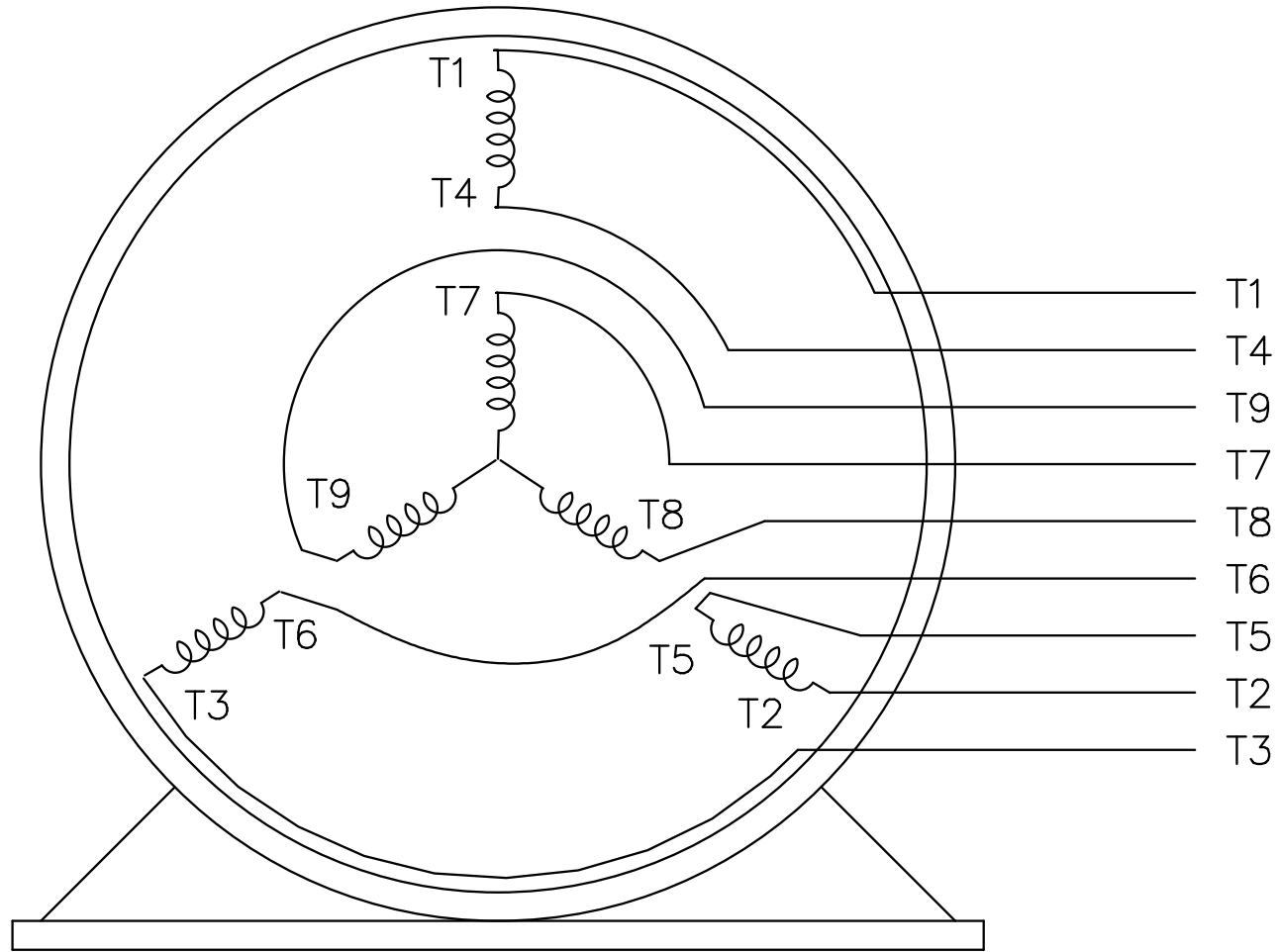
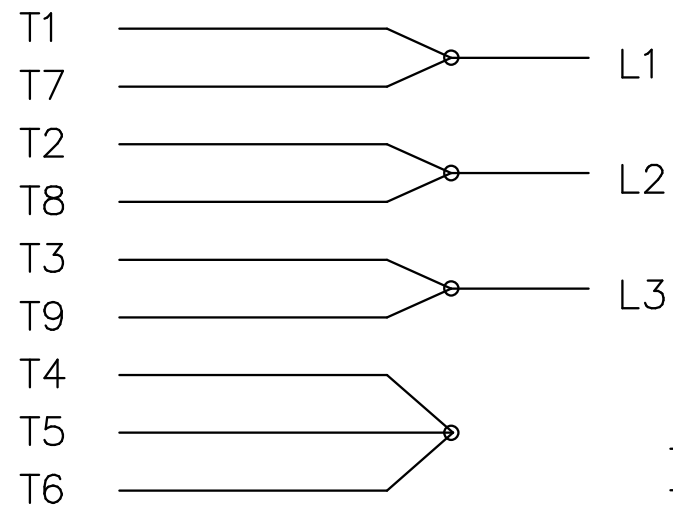
THREE PHASE  
DUAL VOLTAGE MOTOR

EE7308-LN

HIGH VOLTAGE



LOW VOLTAGE



VIEW OF TERMINAL END

REF.  
WINDING DIAGRAM

T8Y, T2Y, T2BL, T4BX, T2EC, T2G  
T6BZ, T2B, T6BL, T4AV, T6B, T4B

OPTIONAL CORD  
CONNECTION

L1 WHITE  
L2 RED  
L3 BLACK

NO.	REVISION	BY & DATE	CHK	TOLERANCES UNLESS SPECIFIED		FINISH	DRAWN BLR 06/11/1999
				DEC.	INCHES		
				.X	±.1		CHK ML 06/18/1999
3	ADDED THE OPTIONAL CORD CONNECTION MU46318	RDH 04/24/2003	DRS	.XX	±.02	TITLE CONNECTION DIAGRAM	APPD GK 06/18/1999
2	RE-ISSUE, ADDED '-' TO PART NUMBER	BLR 08/09/1999	GK	.XXX	±.005	3φ - DUAL VOLTAGE MOTOR	SCALE 1=1
1	NEW DRAWING	BLR 06/18/1999	GK	.XXXX	±.0005	MAT'L.	REF
				ANG	±7'30"		FMF
			RFP			CAD FILE EE7308LN	PREV
			DIST WP			SIZE A	DRAWING NO. EE7308-LN
							PAGE OF 3
							REV. 3

