



A Regal Brand

Catalog # : LM21386

Product Type: AC MOTOR

Description: 25,1800,TEFC,324U,3/60/460

Model: CCF4P25U64

Stock: Stock

Quote: Price:

Date: 10/21/2014



A Regal Brand

Catalog # : LM21386

Product Type: AC MOTOR

Description: 25,1800,TEFC,324U,3/60/460

Model: CCF4P25U64

Stock: Stock

Engineering Data

Volts	460	Volts		Volts	
F.L. Amps	30.5	F.L. Amps		F.L. Amps	
S. F Amps		S. F Amps		S. F Amps	

RPM	1800	Hertz	60		
HP	25	Duty	CONTINUOUS	TYPE	TFS
KW	18.7				
Frame	324U	Serv. Factor	1.0	Phase	3
Max Amb	65	Design	B	Code	G
Insul Class	F	Protection	NOT	Therm.Prot.	
Eff 100%	92.4	Eff 75%		PF	83
UL	V-INS, CONST UL REC	CSA	Yes	Bearing OPE	311
CC Number	CC004A	CE	Yes	Bearing PE	312
Load Type		Inverter Type		Speed Range	NONE

Motor Wt.	748 LB	Enclosure	TEFC	Lubrication	STANDARD
Nameplate		Mounting	RIGID	Rotation	REV
Assembly		Shaft Dia.		Ext. Diag.	A-EE7300-LN
Cust Part No		Outline	B-SS311071LN-1150	Ext. Diag2	
Packaging	B	Outline Dash No		Winding	K3244143
Carton Label				GROUP :	2
Iris		Paint	LINCOLN GRAY	Test Card	

Form Factor		RMS Amps		Const TorqueSpeed Range
Torque		Peak		
AB Code		Peak@DegC		
Resistance				
Connection				

Rework Status	Rework TYPE
---------------	-------------

Hazardous Loc
Explosion Proof
Class
Class

NONE

Temp Op Code
GROUP
GROUP

Brake Motors
FORCE
VDC
ADC

Brake Coil OHMs @25 C

Performance
Torque UOM
Torque
CURRENT (amps)
Efficiency (%)
PowerFactor

Inertia (WK²)

Load Curve Data @60 HzVolts,25Horsepower

Load	Amps	KW	RPM	Torque	Eff	PF	Rise By Resis	Frame Rise
0.0	11.5	1.5	1800	0.0	0.0	9.0	0.0	-
0.25	13.5	5.5	1795	18.3	84.0	51.0	0.0	-
0.5	18.2	10.5	1790	36.8	90.2	71.0	0.0	-
0.75	24.0	15.2	1785	55.2	91.7	79.5	0.0	-
1.0	30.5	20.2	1780	73.8	92.4	83.0	50.0	-
1.15	35.0	23.5	1778	85.0	92.4	84.0	70.0	-
1.25	38.0	25.5	1775	92.5	91.7	84.0	85.0	-

SOURCE: CALCULATED GROUP: 2

Load Curve Data @60HzVolts,25Horsepower

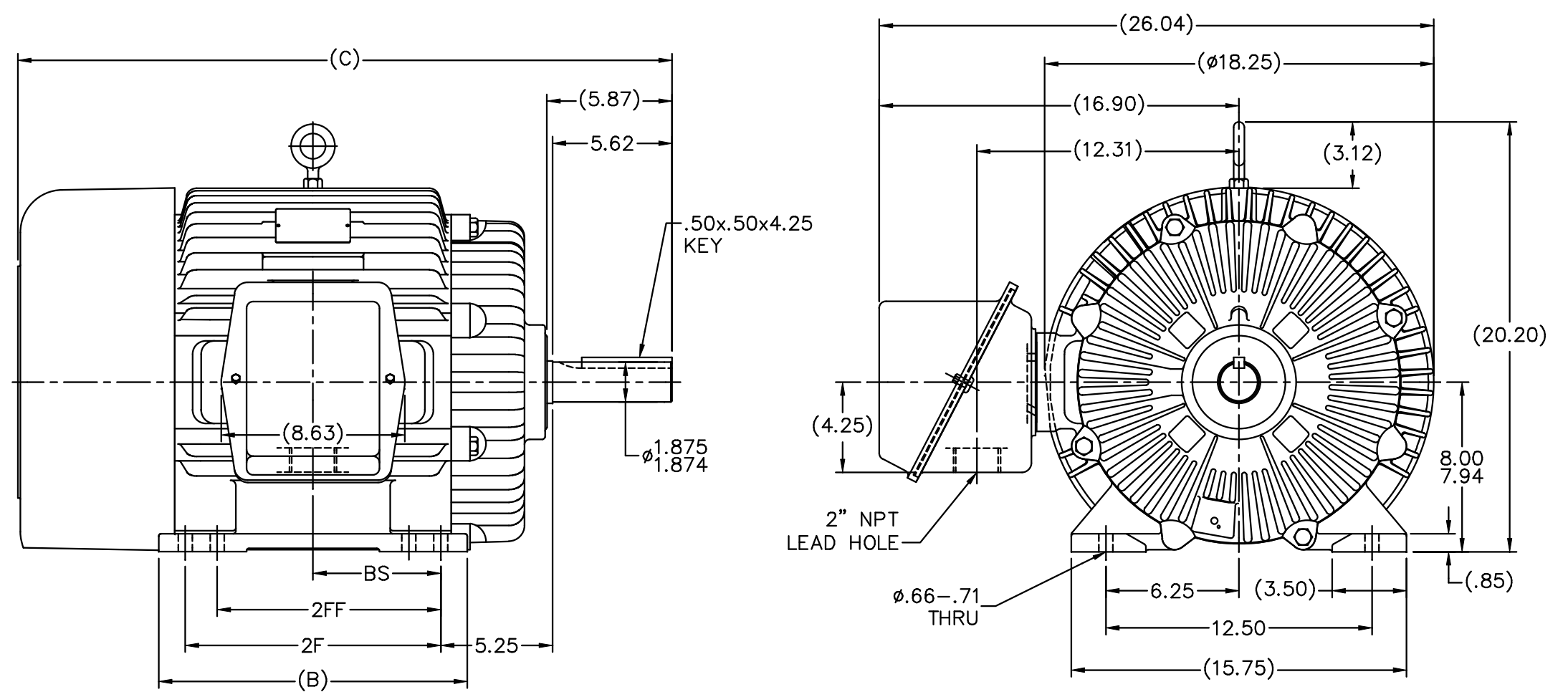
Load	Amps	KW	RPM	Torque	Eff	PF	Rise By Resis	Frame Rise
------	------	----	-----	--------	-----	----	---------------	------------

Load Curve Data Not Available

Quote: Price:

Date: 10/21/2014

SS311071LN



- NOTES:
1. CONDUIT BOX CAN BE ROTATED IN 90° STEPS.
 2. CONDUIT BOX CAN BE MOUNTED ON OPPOSITE SIDE BY REMOVING BRACKETS AND TURNING FRAME 180°.
 3. NAMEPLATE TO BE READ FROM CONDUIT BOX SIDE OF MOTOR.

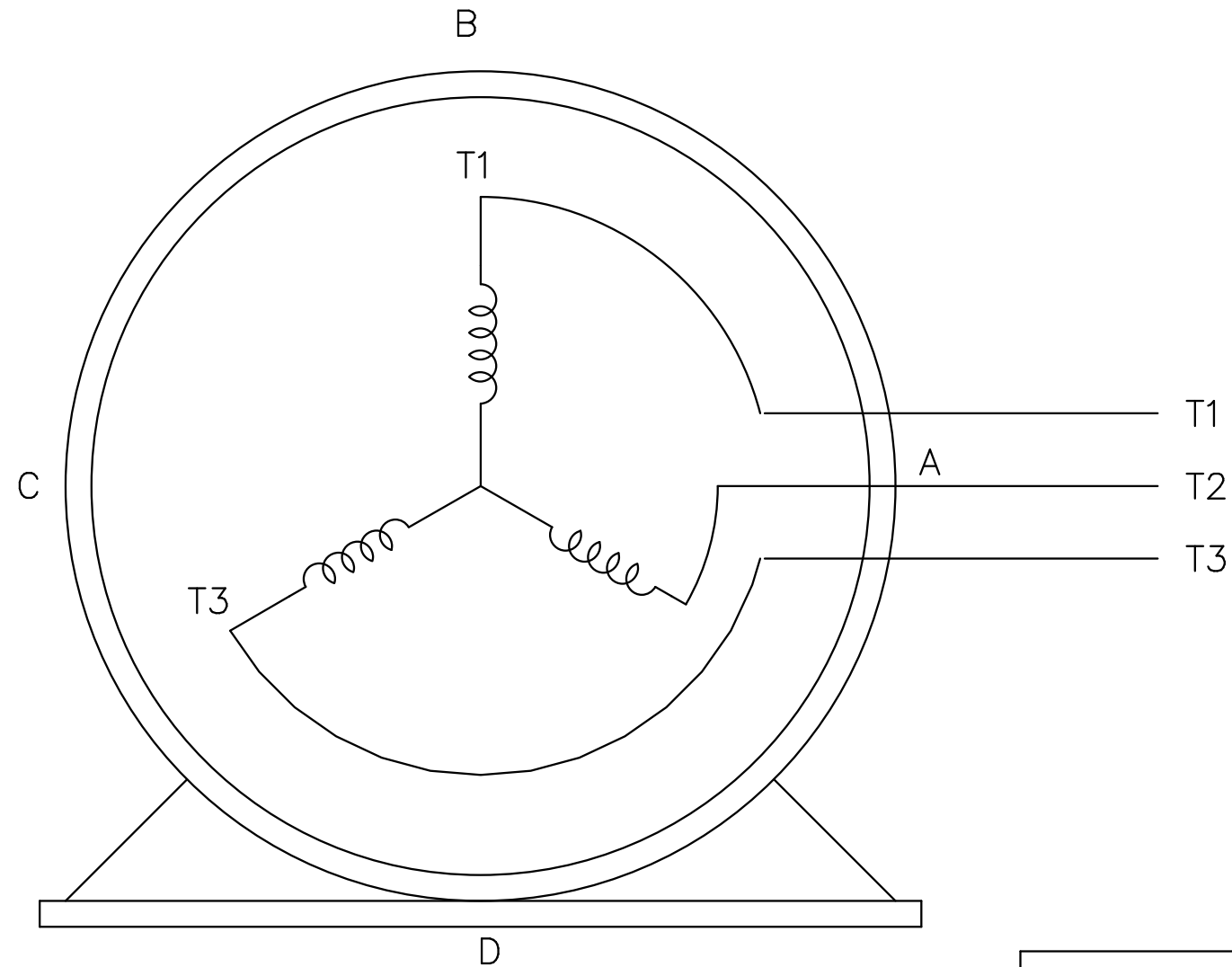
DASH	FR.	C	B	BS	2F	2FF	HOLE QTY.
1150	324U	29.24	13.00	5.25	10.50	—	4
1300	324/6U	30.74	14.50	6.00	12.00	10.50	8

		TOLERANCES UNLESS SPECIFIED		Lincoln MOTOR		DRAWN DRS 10-23-2000	
		DEC.	INCHES			CHK	ML 10-31-2000
4	ADDED DASH 1150 BACK TO DRAWING	TAT	04-26-2005	ML	.X ±	APPD	GK 10-31-2000
3	DELETED DASH 1150 & 1450 CN33797	RJW	03-22-2005	ML	.XX ±	TITLE OUTLINE - TEFC 320U FR. - CAST C'BOX	
2	REMOVED BRG. CAP SCREWS MU34291	NJS	11-17-2000		.XXX ±	SCALE 1=5	
1	NEW DRAWING	DRS	10-31-2000		.XXXX ±	REF	
NO. REVISION		BY & DATE		CHK	ANG ±	FMF	
THIS DRAWING IN DESIGN AND DETAIL IS OUR PROPERTY AND MUST NOT BE USED EXCEPT IN CONNECTION WITH OUR WORK ALL RIGHTS OF DESIGN AND INVENTION ARE RESERVED THIS IS AN ELECTRONICALLY GENERATED DOCUMENT - DO NOT SCALE THIS PRINT				RFP	CAD FILE ss311071ln	SIZE	DRAWING NO. PAGE OF REV.
				DIST	LB	B	SS311071LN 4

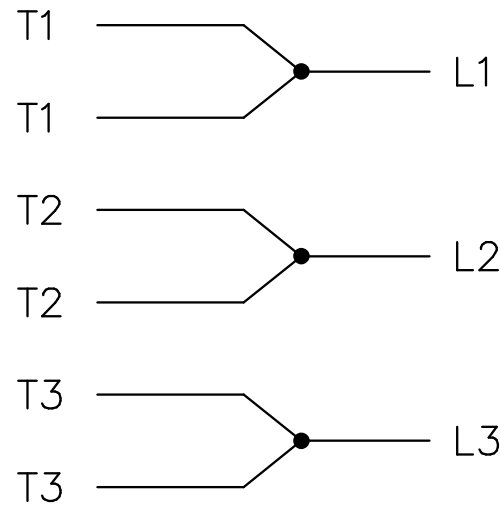
THREE PHASE – SINGLE VOLTAGE
MOTOR – CONDUIT BOX @ 'A'

EE7300-LN

TO REVERSE ROTATION:
INTERCHANGE ANY TWO LINE
LEAD CONNECTIONS



IF MOTOR HAS
6 LEADS




A-9806 DECAL

OPTIONAL CORD
CONNECTION

L1 WHITE
L2 RED
L3 BLACK

VIEW OF TERMINAL END

		TOLERANCES UNLESS SPECIFIED				DRAWN BLR 08-13-1999	
		DEC.	INCHES			CHK	ML
		.X	±.1				APPD GK 08-13-1999
		.XX	±.02	TITLE CONNECTION DIAGRAM SINGLE VOLT – 3Ø MOTOR		SCALE	1=1
2	ADDED OPTIONAL CORD CONNECTION PER MU47226	CTO 03-31-2004	PJB .XXX	±.005	MAT'L.	REF	
1	NEW DRAWING	CTO 08-13-1999	.XXXX	±.0005	FINISH	FMF	
NO.	REVISION	BY & DATE	CHK	ANG	FINISH	PREV	
THIS DRAWING IN DESIGN AND DETAIL IS OUR PROPERTY AND MUST NOT BE USED EXCEPT IN CONNECTION WITH OUR WORK ALL RIGHTS OF DESIGN AND INVENTION ARE RESERVED THIS IS AN ELECTRONICALLY GENERATED DOCUMENT – DO NOT SCALE THIS PRINT			RFP	CAD FILE EE7300_LN		SIZE	DRAWING NO. PAGE OF
			DIST	WP	A	EE7300-LN	REV. 2