



A Regal Brand

Catalog # : LM24079

Product Type: AC MOTOR

Description: 1,1725,TEFC,56C,3/60/208-230/460

Model: SRF4S1TC61

Stock: Stock

Quote: Price:

Date: 10/14/2014

Hazardous Loc
Explosion Proof
Class
Class

NONE

Temp Op Code
GROUP
GROUP

Brake Motors
FORCE
VDC
ADC

Brake Coil OHMs @25 C

Performance
Torque UOM
Torque
CURRENT (amps)
Efficiency (%)
PowerFactor

Inertia (WK²)

Load Curve Data @60/50 HzVolts,1Horsepower

Load	Amps	KW	RPM	Torque	Eff	PF	Rise By Resis	Frame Rise
0.0	1.2	0.12	1800	0.0	0.0	11.5	0.0	-
0.25	1.3	0.31	1785	0.74	61.0	29.0	0.0	-
0.5	1.4	0.51	1775	1.5	73.5	45.0	0.0	-
0.75	1.6	0.72	1755	2.2	77.0	60.0	0.0	-
1.0	1.8	0.93	1730	3.0	77.0	68.4	55.0	-
1.15	1.9	1.1	1725	3.5	77.0	71.0	70.0	-
1.25	2.0	1.2	1720	3.8	77.0	73.5	85.0	-
1.5	2.3	1.4	1710	4.6	77.0	78.5	0.0	-
1.75	2.6	1.7	1685	5.5	76.5	82.0	0.0	-

SOURCE: CALCULATED GROUP: 3

Load Curve Data @60/50HzVolts,1Horsepower

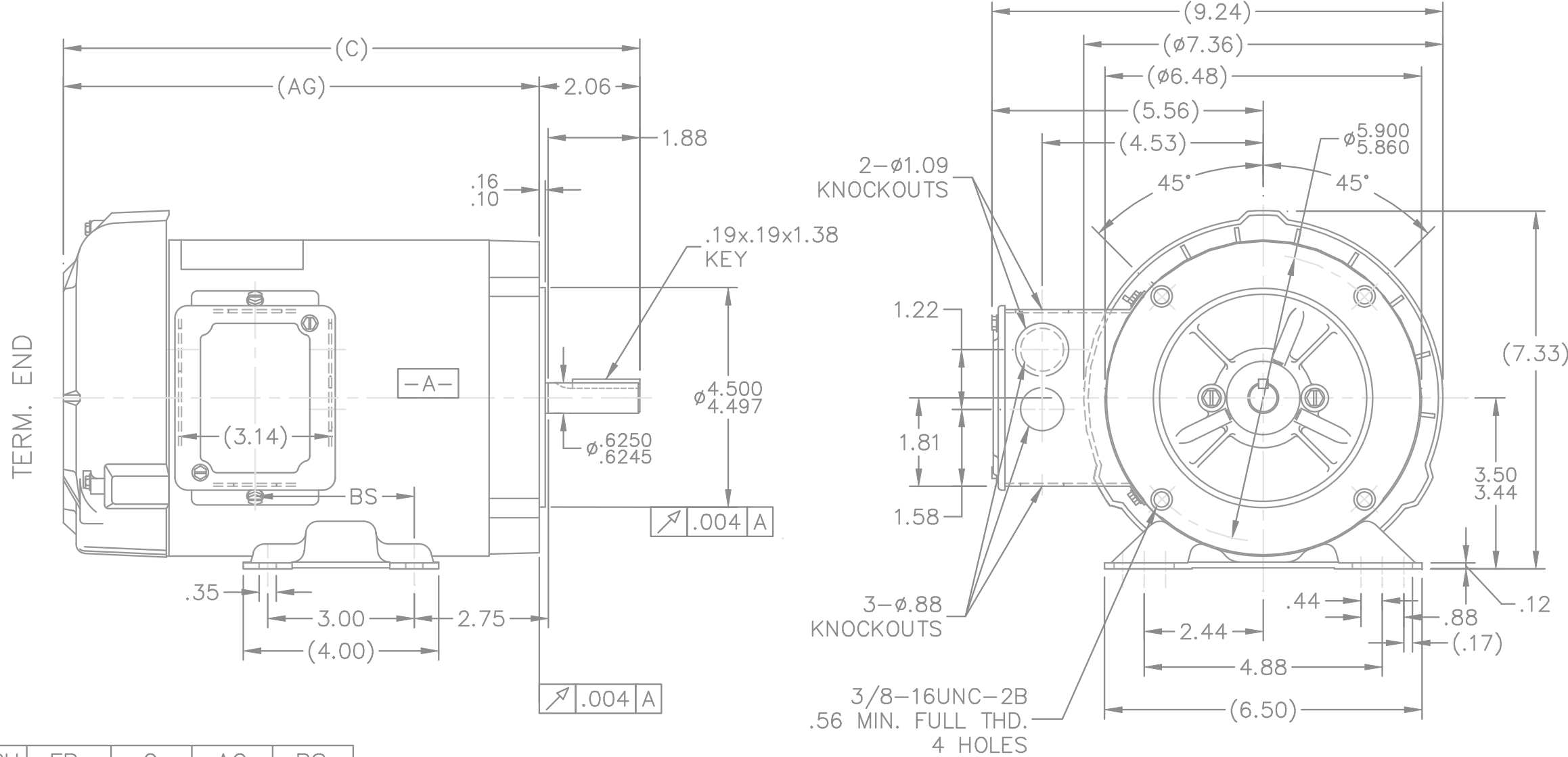
Load	Amps	KW	RPM	Torque	Eff	PF	Rise By Resis	Frame Rise
------	------	----	-----	--------	-----	----	---------------	------------

Load Curve Data Not Available

Quote: Price:

Date: 10/14/2014

100110LN



DASH	FR.	C	AG	BS
606	56-60	11.31	9.25	2.75
656	56-65	11.81	9.75	3.25
706	56-70	12.31	10.25	3.75
756	56-75	12.81	10.75	4.25

06-01-2000

NOTES:
 1. CONDUIT BOX CAN BE ROTATED 180°.
 2. NAMEPLATE READ FROM CONDUIT BOX SIDE OF MOTOR.

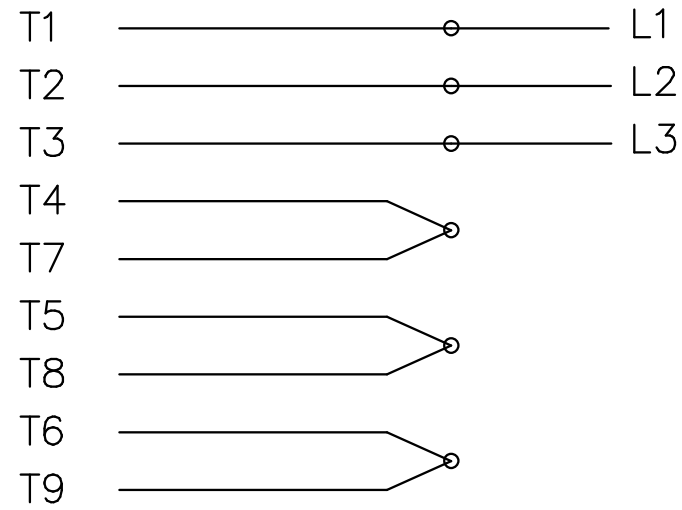


		TOLERANCES UNLESS SPECIFIED		TITLE	DRAWN	
		DEC.	INCHES			BLR 06-10-1999
		.X	±.1	OUTLINE	CHK ML 06-18-1999	
		.XX	±.03		APPD GK 06-18-1999	
2	ADDED NAMEPLATE LOC. CN27400-296	BLR	08-05-1999	56 FRAME - TEFC - C'FACE	SCALE 5=16	
1	NEW DRAWING	BLR	06-18-1999	MAT'L.	REF	
NO.	REVISION	BY & DATE	CHK	FINISH	FMF	
			ANG	±7'30"	PREV	
THIS DRAWING IN DESIGN AND DETAIL IS OUR PROPERTY AND MUST NOT BE USED EXCEPT IN CONNECTION WITH OUR WORK ALL RIGHTS OF DESIGN AND INVENTION ARE RESERVED THIS IS AN ELECTRONICALLY GENERATED DOCUMENT - DO NOT SCALE THIS PRINT		RFP	06-18-1999	CAD FILE 100110ln	SIZE	DRAWING NO. PAGE 1 OF 1 REV.
		DIST	WP		A	100110LN 2

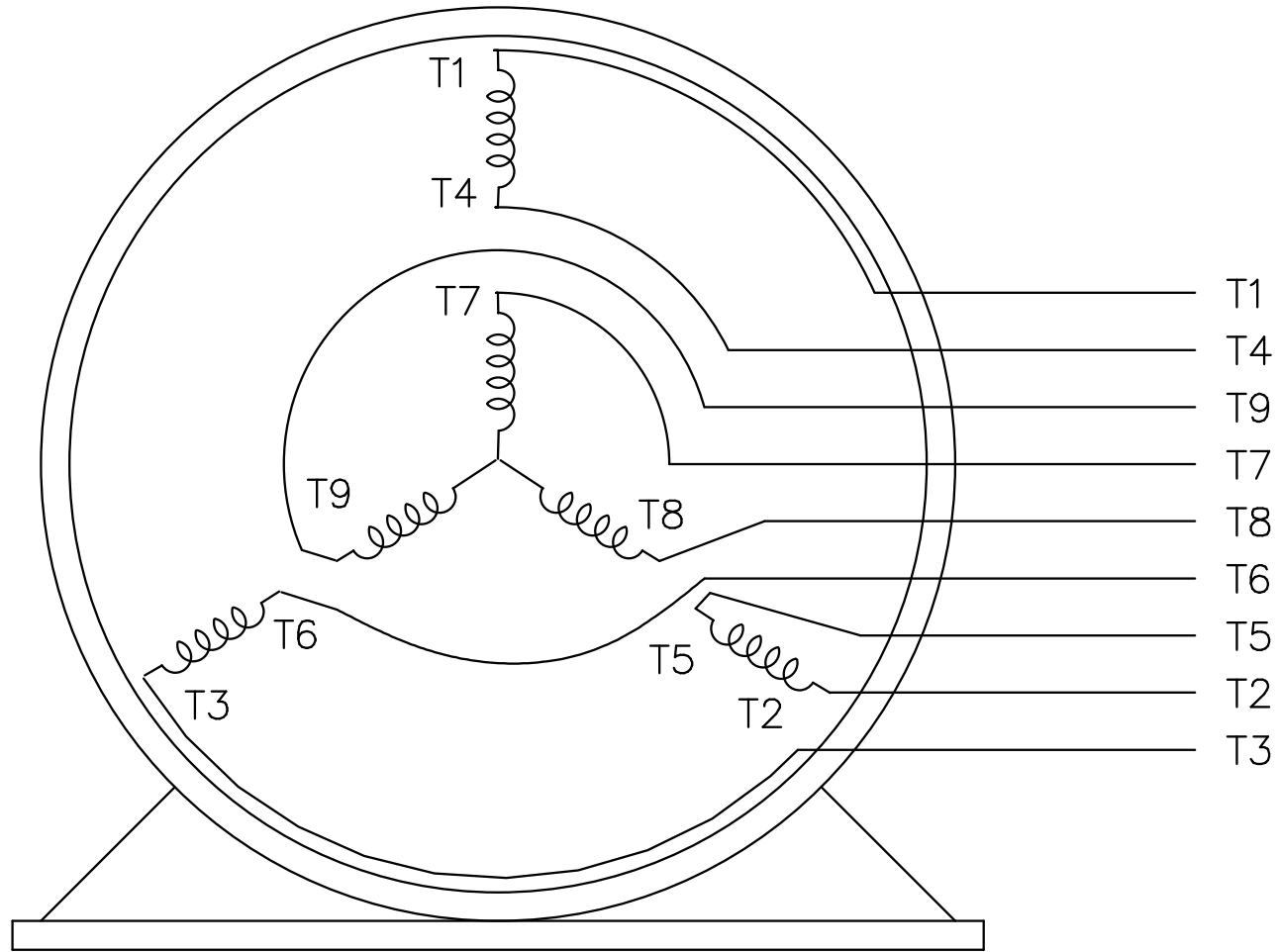
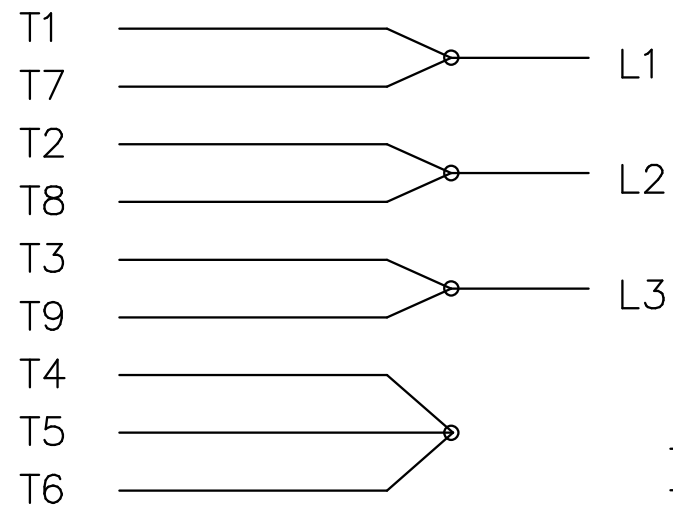
THREE PHASE
DUAL VOLTAGE MOTOR

EE7308-LN

HIGH VOLTAGE



LOW VOLTAGE



VIEW OF TERMINAL END

REF.
WINDING DIAGRAM

T8Y, T2Y, T2BL, T4BX, T2EC, T2G
T6BZ, T2B, T6BL, T4AV, T6B, T4B

OPTIONAL CORD
CONNECTION

L1 WHITE
L2 RED
L3 BLACK

NO.	REVISION	BY & DATE	CHK	TOLERANCES UNLESS SPECIFIED		FINISH	DRAWN BLR 06/11/1999
				DEC.	INCHES		
				.X	±.1		CHK ML 06/18/1999
3	ADDED THE OPTIONAL CORD CONNECTION MU46318	RDH 04/24/2003	DRS	.XX	±.02	TITLE CONNECTION DIAGRAM	APPD GK 06/18/1999
2	RE-ISSUE, ADDED '-' TO PART NUMBER	BLR 08/09/1999	GK	.XXX	±.005	3φ - DUAL VOLTAGE MOTOR	SCALE 1=1
1	NEW DRAWING	BLR 06/18/1999	GK	.XXXX	±.0005	MAT'L.	REF
				ANG	±7'30"		FMF
			RFP			CAD FILE EE7308LN	PREV
			DIST WP			SIZE A	DRAWING NO. EE7308-LN
							PAGE OF 3
							REV. 3

