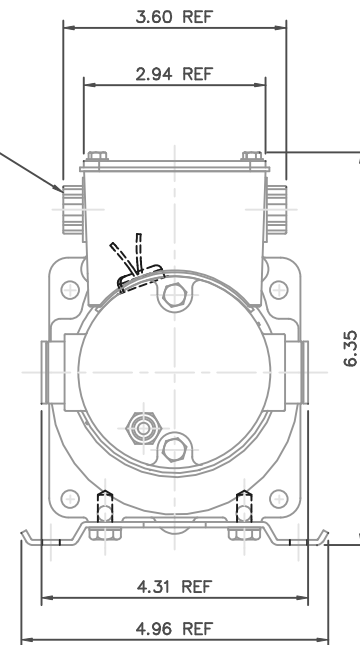


(2) 1/2 NPT CONDUIT PLUG  
(2) LEADS 6.0 LONG MIN



NOTES:

- 1) GASKETS BETWEEN FRAME AND ENDBELL/GEARBOX, CONDUIT BOX AND FRAME, AND CONDUIT BOX COVER AND CONDUIT BOX.
- 2) NAMEPLATE MUST BE LOCATED .10 BELOW CONDUIT BOX EDGE.

CATALOG NUMBER	OUTPUT RPM	FULL LOAD TORQUE LB.-IN.	INPUT HP	OVERHUNG LOAD LBS.	RATIO TO 1
M1125267.00	31	220	1/8	327	58

				TOLERANCES UNLESS SPECIFIED		LEESON	ELECTRIC MOTORS GEARMOTORS AND DRIVES	DRAWN IPG 5/12/05	
NO.	REVISION	BY & DATE	CHK	ANG	FINISH			SCALE	PREV
02	1/2 NPT CONDUIT PLUG QTY. WAS 3. ISAAC 08-3457	RPB 7/29/08	BC	.X	±.1	TITLE	OUTLINE - 31 FRAME DC 12V - P300 GEARMOTOR	CHK	SAD 5/12/05
01	REMOVED (2) O-RINGS FROM INSIDE OF BRUSH HOLDERS.			.XX	±.03			APPD	
	CHANGED BRUSH CAPS & ADDED TEFLON. ECN 07-4100	RPB 11/21/07	BC	.XXX	±.005			SCALE	1=2
00	RELEASED: REF. M1030987.00	IPG 5/12/05	SAD	.XXXX	±.0005	MAT'L		REF	M1030987.00
			CHK	ANG	±1/2'	FINISH		FMF	M1125267.00
THIS DRAWING IN DESIGN AND DETAIL IS OUR PROPERTY AND MUST NOT BE USED EXCEPT IN CONNECTION WITH OUR WORK ALL RIGHTS OF DESIGN AND INVENTION ARE RESERVED THIS IS AN ELECTRONICALLY GENERATED DOCUMENT - DO NOT SCALE THIS PRINT				RFP		CAD FILE	M1030988	SIZE	DRAWING NO.
				DIST				B	M1030988.00
									REV. 02