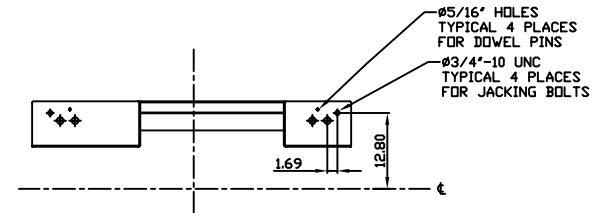
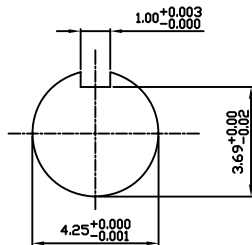


**TECHNICAL INFORMATION**

- BEARING LUBRICATION DE: CHEVRON SRI  
ODE: CHEVRON SRI
- BEARING TYPE DE: 6326C3  
ODE: 6326C3 INSULATED
- WINDING TEMP. DETECTORS  
NUMBER AND TYPE: 6xRTD(PtO°C-100ohm)  
LOCATION: IN STATOR SLOT
- BEARING TEMP. DETECTORS  
NUMBER AND TYPE: \_\_\_\_\_
- SPACE HEATER 1 PHASE  
VOLTS: 120 WATTS: 400
- ROTATION: CCW VIEWED FROM NON DRIVE END  
THIS MOTOR IS UNI DIRECTIONAL
- MOTOR PAINT COLOR: \_\_\_\_\_
- APPROX. WEIGHT: 7300 Lbs
- ACCESORIES: \_\_\_\_\_



DRAWING LIST				
MAIN TERMINAL BOX				
130-7532-02				
AUX TERMINAL BOX FOR	2	UPDATE	MH	8/15/05
SPACE HEATER 130-7520-50				
R.T.D. 130-7522-51	1	UPDATE	RW	4/16/03
THERMISTOR N/A				
	0	FIRST ISSUE	RW	3/25/03
PRODUCTION #	N/A	NO.	REVISION	BY DATE

**MOTOR OUTLINE FOR THREE PHASE INDUCTION MOTOR**

CUSTOMER NAME				P.O. NO.	MOTOR TAG NO.	
OUTPUT	POLE	VOLTAGE	FREQUENCY	FULL LOAD SPEED	TOSHIBA MODEL NO.	
1500 HP	4	4000 V	60 Hz	1785 (min <sup>-1</sup> )	M305WTAL11E-C	
TYPE	FORM	INS. CLASS	RATING	FRAME	S.F.	ENCLOSURE
TIKE	DCK4	F	CONT.	5811/12	1.15	WP-II
TOSHIBA INTERNATIONAL CORPORATION HOUSTON, TEXAS U.S.A.						
3rd ANGLE PROJ.	PREPARED BY:	DATE:	CHECKED BY:	DATE:	DRAWING NO.:	REV.
	R. WILKINS	03/25/03	M. HO	04/01/03	MDSL 0087-02	2

**TOSHIBA INTERNATIONAL CORPORATION**  
**Industrial Division / Houston Motor Plant**

**SQUIRREL CAGE INDUCTION MOTOR  
 PERFORMANCE SPECIFICATIONS**

INDEX	MPCF-1033
SHEET NO.	1 of 1
ISSUED	11/08/96
SUPERSEDES	10/06/95
REVISION	1
WRITTEN BY	R. EVANS
APPROVED BY	<i>Jay Bugbee</i>

Customer Tag:

CUSTOMER:  
 TIC SR No.:  
 Customer PO:

**MOTOR NAMEPLATE DATA**

H.P.: 1500	VOLTS: 4000	3 Ø / 60	Hz	S. RPM: 1800
FRAME: 5811/12 US	ENCL: WP11	FLAMPS:		FLRPM: 1785
FORM: DCK4	S.F.: 1.15	NEMA DESIGN: N / A		INSUL CLASS: F
TYPE: TIKE	AMB.: 40	CODE: F		DUTY: CONT.
MODEL No.: M305WTAL11E-C		kW: 1125		Serial No.:
NOM. EFF.: 95.8	MIN. EFF.: 95	P.F.: 87		

<b>AMPERAGE</b> Locked Rotor: 1200	<b>TORQUES</b> FULL LOAD (lb-ft.): 4,413.4 LOCKED ROTOR (%): 120 BREAK DOWN (%): 255	<b>** BEARINGS:</b> Drive End: 6326C3 Opposite Drive End: 6326C3 INS.
---------------------------------------	---	---

<b>EFFICIENCY (%)</b> FULL LOAD: 96 3/4 LOAD: 96 1/2 LOAD: 95.6	<b>POWER FACTOR (%)</b> FULL LOAD: 87 3/4 LOAD: 84.9 1/2 LOAD: 78.6
--	--

ALL CHARACTERISTICS ARE AVERAGE EXPECTED VALUES BASED UPON RATED VOLTAGE, FREQUENCY AND SINEWAVE POWER INPUT.

\* TEMPERATURE RISE WILL BE CONSISTENT WITH INSULATION, AMBIENT AND SERVICE FACTOR AS DEFINED BY NEMA-MG-12.43 OR -20.40.

\*\* BEARINGS ARE THE ONLY RECOMMENDED SPARE PART(S).

**CERTIFIED BY:**  
**DATE:**

**TOSHIBA**

Reliability in Motion

**TOSHIBA INTERNATIONAL CORPORATION**

INDUSTRIAL DIVISION

PO BOX 40906

HOUSTON TX 77240

(713) 466-0277

(800) 231-1412

FAX (713) 466-8773

**SPARE PARTS (RECOMMENDED)**

OTHER THAN THE GREASE USED FOR RE-GREASABLE BEARINGS, **TOSHIBA** ADVISES THAT THERE ARE NO "USE" PARTS. THE ONLY INSURANCE SPARES THAT **TOSHIBA** SUGGESTS FOR THESE SQUIRREL CAGE INDUCTION MOTORS ARE INDUSTRY STANDARD, AND COMMERCIALY AVAILABLE ANTI-FRICTION BEARINGS, AS NOTED BELOW.

MOTOR COMPONENTS (SUCH AS TERMINAL BOXES, FAN COVERS, MACHINED PARTS) ARE AVAILABLE UPON SPECIAL REQUEST. IN THIS CASE, PLEASE ADVISE OUR ORDER ENTRY DEPARTMENT THE MODEL AND SERIAL NUMBERS (FOUND ON THE MOTOR NAMEPLATE) , AND A DESCRIPTION OF THE COMPONENT REQUIRED. THEY WILL THEN FURNISH THE CURRENT PART NUMBER, PRICE AND AVAILABILITY.

(NOTE: OUR INTERNAL PART NUMBERS ARE SUBJECT TO CHANGE WITHOUT NOTICE, AND ARE NOT PUBLISHED).

PLEASE ADVISE IF YOU HAVE ANY QUESTIONS.

CUSTOMER:

PURCHASE ORDER #

Customer Tag:

TOSHIBA FILE #

MODEL # M305WTAL11E-C

HP / RPM / ENCL / FRAME: 1500 / 1800 / WP11 / 5811/12 US

DRIVE END BEARING: 6326C3

OPPOSITE DRIVE END BEARING: 6326C3 INS.

**Prepared By:**

**Date:**

Three Phase Motor Wiring Diagram
"Across the line" (Full Voltage) Starting



Customer Name:	
PO No.:	
Customer Tag:	
TIC File No.:	
Motor Model No.	M305WTAL11E-C

For Further Information Regarding Toshiba motor starting, maintenance or wiring,  
Please refer to the "Toshiba - A Quality Product for World Energy" Installation and  
Maintenance Manual, or contact the Toshiba Low Voltage Motor Marketing Department.  
(800) 231-1412

Prepared By:   
Date: