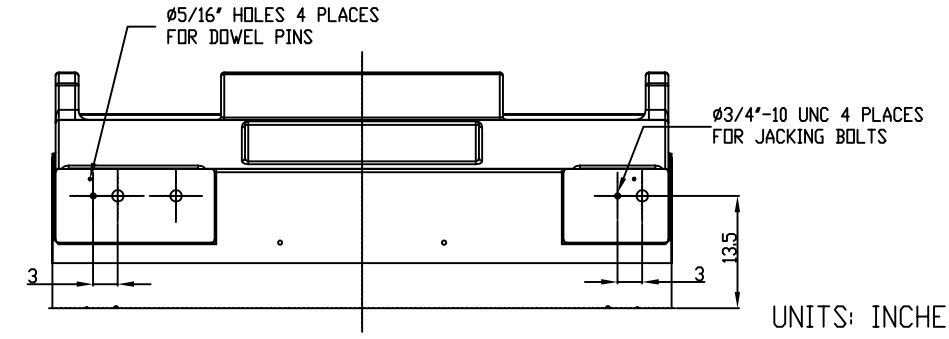
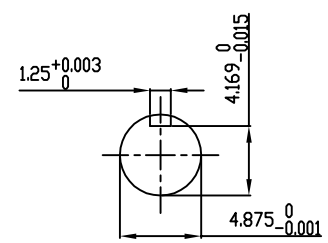


TECHNICAL INFORMATION

- BEARING LUBRICATION DE: MOBIL POLYREX EM OR EQUIVALENT
ODE: MOBIL POLYREX EM OR EQUIVALENT
- BEARING TYPE DE: 6328 INS
ODE: 6328 INS
- WINDING TEMP. DETECTORS
NUMBER AND TYPE: 6xRTD(Pt0°C-100ohm)
LOCATION: IN STATOR SLOT
- BEARING TEMP. DETECTORS
NUMBER AND TYPE: _____
- SPACE HEATER 1 PHASE
VOLTS: 120 WATTS: 800
- ROTATION: CCW VIEWED FROM NON DRIVE END
THIS MOTOR IS UNI DIRECTIONAL
- MOTOR PAINT COLOR: GRAY
- APPROX. WEIGHT: 14,000 Lbs
- ACCESORIES: _____

**PRELIMINARY
FOR QUOTATION ONLY
DO NOT BUILD
FROM THIS DRAWING**



UNITS: INCHES

DRAWING LIST					MOTOR OUTLINE FOR THREE PHASE INDUCTION MOTOR								
MAIN TERMINAL BOX 130P-7550-68					CUSTOMER NAME		P.O. NO.		MOTOR TAG NO.				
AUX TERMINAL BOX FOR					OUTPUT HP	POLE	VOLTAGE V	FREQUENCY Hz	FULL LOAD SPEED (min ⁻¹)	TOSHIBA MODEL NO.			
SPACE HEATER	139-0052-01	2	GRS FROM SRI JACKING TO INLINE	RWS	1/2/14	TYPE	FORM	INS. CLASS F	RATING CONT.	FRAME 6813US	S.F.	ENCLOSURE WP-II	
R.T.D.	139-0052-04	1	UPDATE INLET WINDOW SIZE & MAIN T-BOX P. No., CHG. SPACE HEATER WATTS FROM 400	JMP	10/12/11	TOSHIBA INTERNATIONAL CORPORATION HOUSTON, TEXAS U.S.A.							
THERMISTOR	N/A	0	FIRST ISSUE	JMP	03/01/11	3rd ANGLE PROJ.		PREPARED BY: J.PINON	DATE: 03/01/11	CHECKED BY: B.SIDLE	DATE: 03/01/11	DRAWING NO.: MDSL0087-62	REV. 2
PRODUCTION #	N/A	NO.	REVISION	BY	DATE								

TYPICAL MOTOR PERFORMANCE DATA

Model: M407WTAL11E-C

HP	kW	Pole	FL RPM	Frame	Voltage	Hz	Phase	FL Amps
2000	1492	6	1188	6813US	4000	60	3	250
Enclosure	IP	Ins. Class	S.F.	Duty	NEMA Nom. Eff.	NEMA Design	kVA Code	Ambient (°C)
WP-II	24	F	1.15	CONT	95.5	-	F	40 C

Load	HP	kW	Amperes	Efficiency (%)	Power Factor (%)
Full Load	2000	1491.4	249.9	95.5	90.2
¾ Load	1500.00	1118.6	190.3	95.3	89.0
½ Load	1000.00	745.7	134.8	94.5	84.6
¼ Load	500.00	372.9	87.0	91.2	67.8
No Load			53.8		6.4
Locked Rotor			1600.20		27.5

Torque				Rotor wk² Inertia (lb-ft²)
Full Load (lb-ft)	Locked Rotor (% FLT)	Pull Up (% FLT)	Break Down (% FLT)	
8842	150	155	215	1419.40

Safe Stall Time(s)		Sound Pressure dB(A) @ 1M	Bearings*		Approx. Motor Weight (lbs)
Cold	Hot		DE	NDE	
25.4	10.2	-	6328C3 INS	6328C3 INS	

*Bearings are the only recommended spare part(s).

Motor Options:
Mounting:Footed,Shaft:US Shaft

Customer	
Customer PO	
Sales Order	
Project #	

Tag:

All characteristics are average expected values.

TOSHIBA INTERNATIONAL CORPORATION · HOUSTON, TEXAS U.S.A.

Engineering	bmmamen	Doc. Written By	D. Suarez	Doc.# / Rev	MPCF-1119 / 0
Engr. Date	7/10/2014	Doc. Approved By	M. Campbell	Doc. Issued	6/8/2011

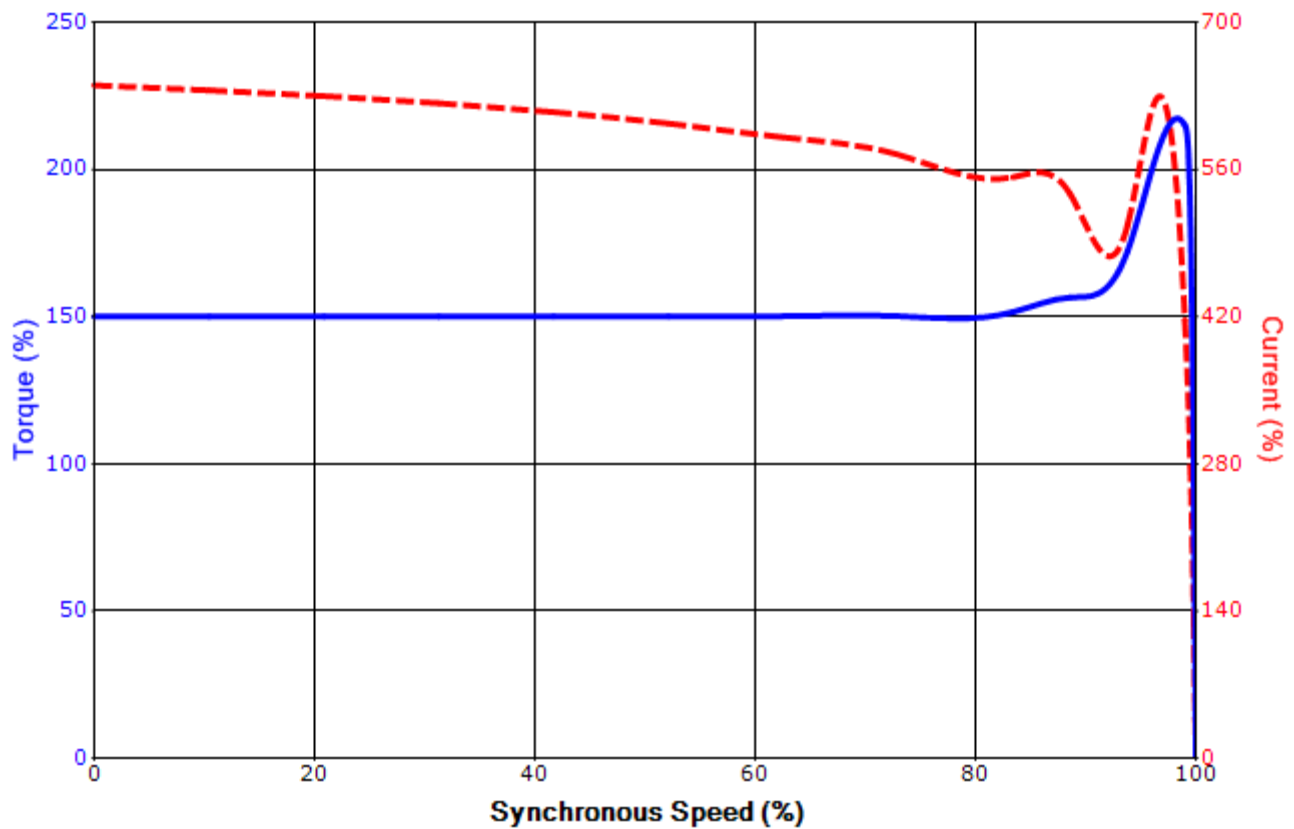
Issued Date	4/23/2015	Transmit #	
Issued By	dschoeck	Issued Rev	

SPEED TORQUE/CURRENT CURVE

Model: M407WTAL11E-C

HP	kW	Pole	FL RPM	Frame	Voltage	Hz	Phase	FL Amps
2000	1492	6	1188	6813US	4000	60	3	250
Enclosure	IP	Ins. Class	S.F.	Duty	NEMA Nom. Eff.	NEMA Design	kVA Code	Ambient (°C)
WP-II	24	F	1.15	CONT	95.5	-	F	40 C
Locked Rotor Amps	Rotor wk ² Inertia (lb-ft ²)	Torque						Break Down (%)
		Full Load (lb-ft)	Locked Rotor (%)	Pull Up (%)				
1600.20	1419.40	8842	150	155			215	

Design Values



Customer		wk ² Load Inertia (lb-ft ²)	-
Customer PO		Load Type	-
Sales Order		Voltage (%)	100
Project #		Accel. Time	-

Tag:

All characteristics are average expected values.

TOSHIBA INTERNATIONAL CORPORATION · HOUSTON, TEXAS U.S.A.

Engineering	bmammen	Doc. Written By	D. Suarez	Doc.# / Rev	MPCF-1121 / 0
Engr. Date	7/10/2014	Doc. Approved By	M. Campbell	Doc. Issued	6/8/2011