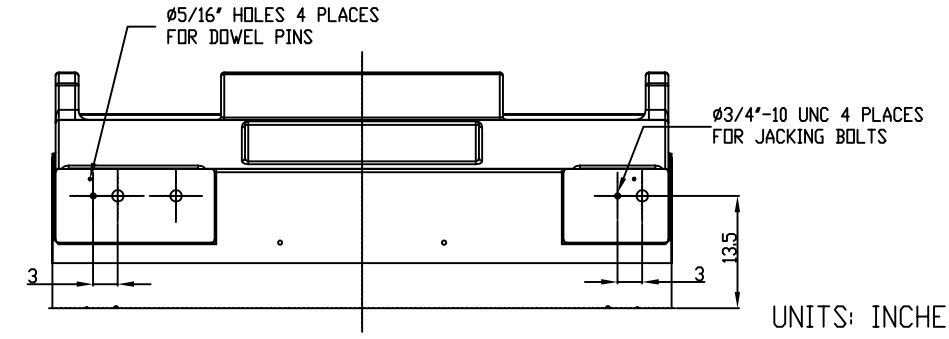
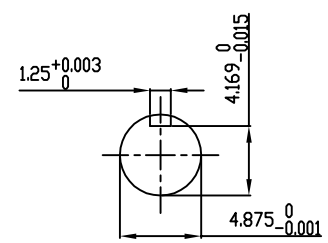


TECHNICAL INFORMATION

1. BEARING LUBRICATION DE: MOBIL POLYREX EM OR EQUIVALENT
ODE: MOBIL POLYREX EM OR EQUIVALENT
2. BEARING TYPE DE: 6328 INS
ODE: 6328 INS
3. WINDING TEMP. DETECTORS
NUMBER AND TYPE: 6xRTD(Pt0°C-100ohm)
LOCATION: IN STATOR SLOT
4. BEARING TEMP. DETECTORS
NUMBER AND TYPE: _____
5. SPACE HEATER 1 PHASE
VOLTS: 120 WATTS: 800
6. ROTATION: CCW VIEWED FROM NON DRIVE END
THIS MOTOR IS UNI DIRECTIONAL
7. MOTOR PAINT COLOR: GRAY
8. APPROX. WEIGHT: 14,000 Lbs
9. ACCESSORIES:

**PRELIMINARY
FOR QUOTATION ONLY
DO NOT BUILD
FROM THIS DRAWING**



DRAWING LIST		MOTOR OUTLINE FOR THREE PHASE INDUCTION MOTOR											
MAIN TERMINAL BOX 130P-7550-68					CUSTOMER NAME			P.O. NO.		MOTOR TAG NO.			
AUX TERMINAL BOX FOR		2	GRS FROM SRI JACKING TO INLINE		RWS	1/2/14	OUTPUT HP	POLE 4	VOLTAGE V	FREQUENCY Hz	FULL LOAD SPEED (min ⁻¹)	TOSHIBA MODEL NO.	
SPACE HEATER	139-0052-01		TYPE	FORM			INS. CLASS F	RATING CONT.	FRAME 6813US	S.F.	ENCLOSURE WP-II		
R.T.D.	139-0052-04	1	UPDATE INLET WINDOW SIZE & MAIN T-BOX P. No., CHG. SPACE HEATER WATTS FROM 400		JMP	10/12/11	TOSHIBA INTERNATIONAL CORPORATION HOUSTON, TEXAS U.S.A.						
THERMISTOR	N/A		0	FIRST ISSUE			JMP	03/01/11	3rd ANGLE PROJ.	PREPARED BY: J.PINON	DATE: 03/01/11	CHECKED BY: B.SIDLE	DATE: 03/01/11
PRODUCTION #	N/A	NO.	REVISION	BY	DATE								

TYPICAL MOTOR PERFORMANCE DATA

Model: M557WTAL11F-C

HP	kW	Pole	FL RPM	Frame	Voltage	Hz	Phase	FL Amps
2750	2052	6	1190	6813US	4000	60	3	368
Enclosure	IP	Ins. Class	S.F.	Duty	NEMA Nom. Eff.	NEMA Design	kVA Code	Ambient (°C)
WP-II	24	F	1.15	CONT	96	-	H	40 C

Load	HP	kW	Amperes	Efficiency (%)	Power Factor (%)
Full Load	2750	2050.7	367.6	96.0	83.9
¾ Load	2062.50	1538.0	292.0	95.7	79.4
½ Load	1375.00	1025.3	225.1	94.8	69.4
¼ Load	687.50	512.7	174.8	91.3	46.4
No Load			133.9		3.5
Locked Rotor			2796.20		27.7

Torque				Rotor wk ² Inertia (lb-ft ²)
Full Load (lb-ft)	Locked Rotor (% FLT)	Pull Up (% FLT)	Break Down (% FLT)	
1.214E+04	195	200	265	1672.86

Safe Stall Time(s)		Sound Pressure dB(A) @ 1M	Bearings*		Approx. Motor Weight (lbs)
Cold	Hot		DE	NDE	
16.1	5.9	-	6328C3 INS	6328C3 INS	

*Bearings are the only recommended spare part(s).

Motor Options:
Mounting:Footed,Shaft:US Shaft

Customer	
Customer PO	
Sales Order	
Project #	

Tag:

All characteristics are average expected values.

TOSHIBA INTERNATIONAL CORPORATION · HOUSTON, TEXAS U.S.A.

Engineering	bmmamen	Doc. Written By	D. Suarez	Doc.# / Rev	MPCF-1119 / 0
Engr. Date	7/10/2014	Doc. Approved By	M. Campbell	Doc. Issued	6/8/2011

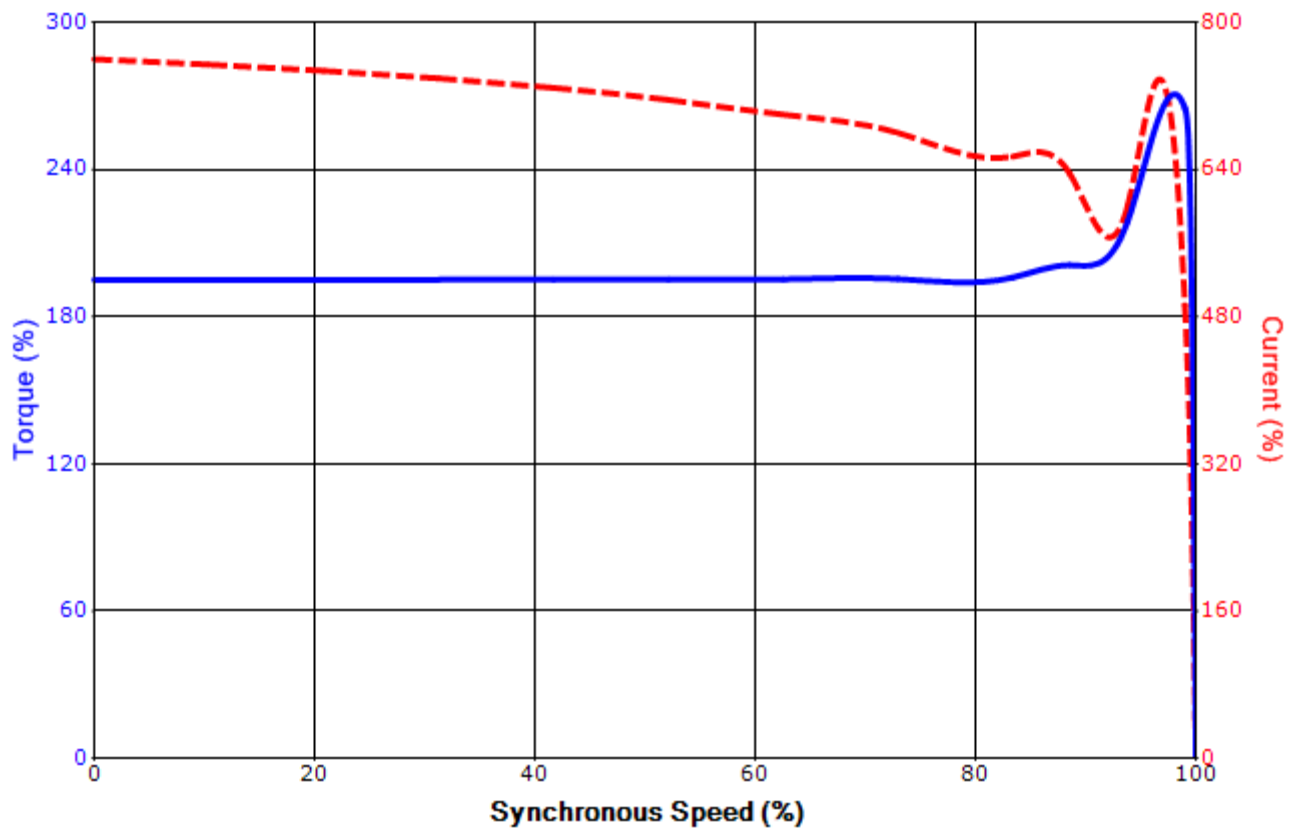
Issued Date	4/23/2015	Transmit #	
Issued By	dschoeck	Issued Rev	

SPEED TORQUE/CURRENT CURVE

Model: M557WTAL11F-C

HP	kW	Pole	FL RPM	Frame	Voltage	Hz	Phase	FL Amps
2750	2052	6	1190	6813US	4000	60	3	368
Enclosure	IP	Ins. Class	S.F.	Duty	NEMA Nom. Eff.	NEMA Design	kVA Code	Ambient (°C)
WP-II	24	F	1.15	CONT	96	-	H	40 C
Locked Rotor Amps	Rotor wk ² Inertia (lb-ft ²)	Torque				Break Down (%)		
		Full Load (lb-ft)	Locked Rotor (%)	Pull Up (%)				
2796.20	1672.86	1.214E+04	195	200	265			

Design Values



Customer		wk ² Load Inertia (lb-ft ²)	-
Customer PO		Load Type	-
Sales Order		Voltage (%)	100
Project #		Accel. Time	-

Tag:

All characteristics are average expected values.

TOSHIBA INTERNATIONAL CORPORATION · HOUSTON, TEXAS U.S.A.

Engineering	bmammen	Doc. Written By	D. Suarez	Doc.# / Rev	MPCF-1121 / 0
Engr. Date	7/10/2014	Doc. Approved By	M. Campbell	Doc. Issued	6/8/2011