

1

2

3

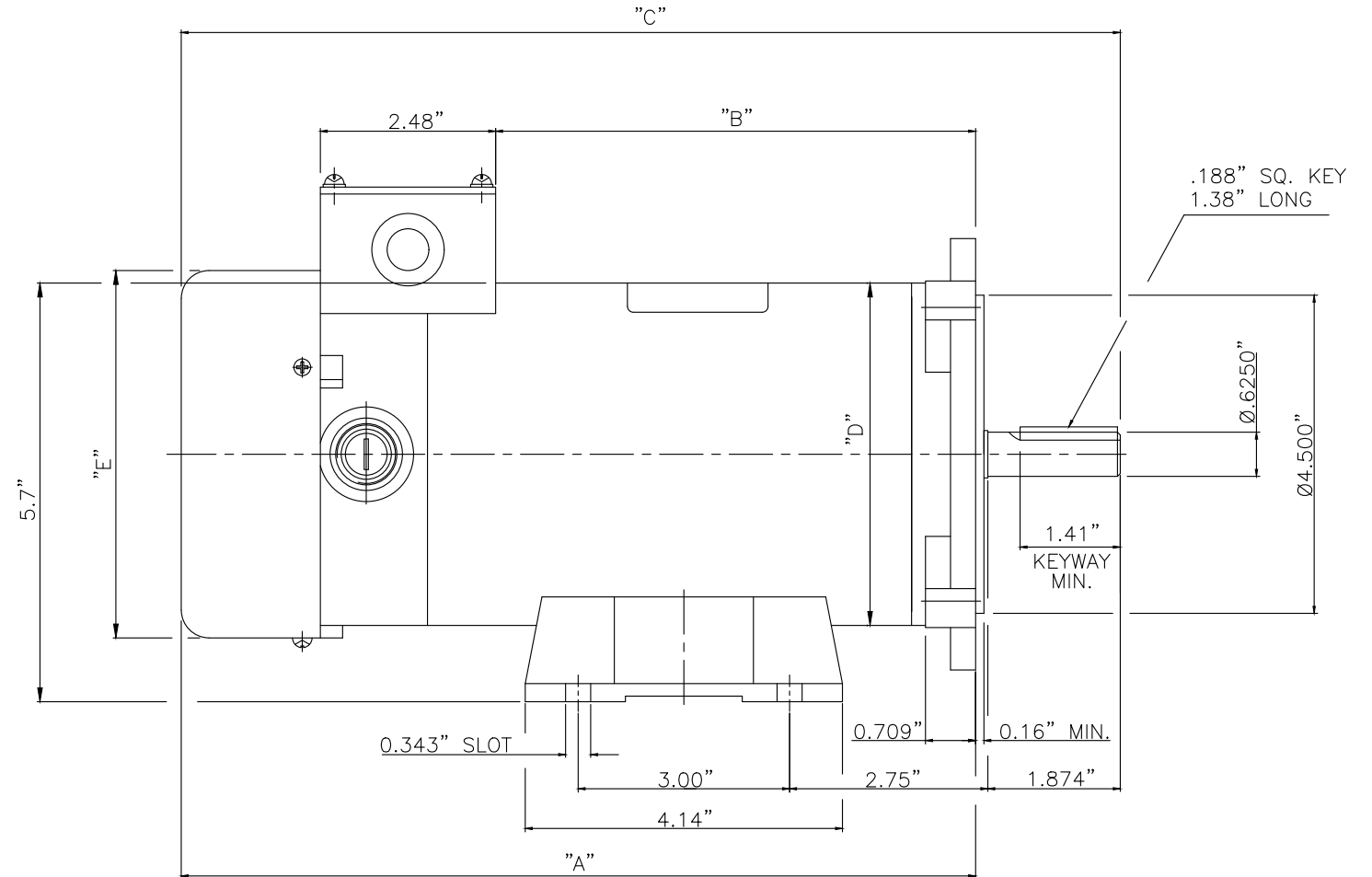
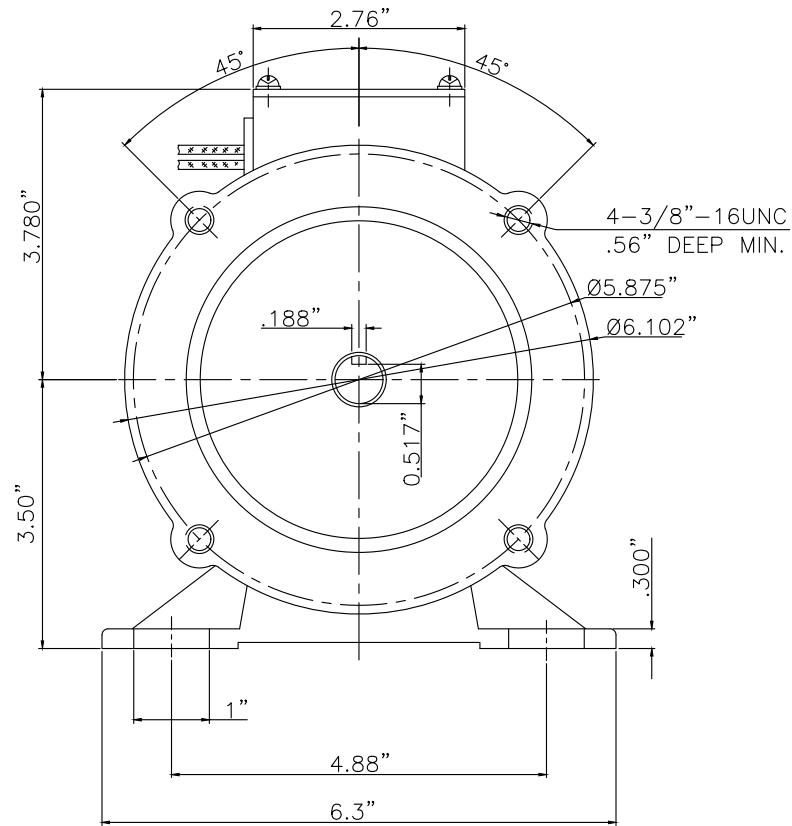
4

5

6

NOTES:

- 1. COLOR & FINISH: BLUE SEMI-GLOSS.
- 2. NAMEPLATE TO BE APPLIED ON TOP OF MOTOR - AS SHOWN.
COUNTRY OF ORIGIN TO APPEAR ON NAMEPLATE - PER RESOLUTION 19 CFR PART 134.
MANUFACTURER UL FILE # TO APPEAR ON NAMEPLATE.
MANUFACTURER SERIAL # & MANUFACTURING DATE CODE TO APPEAR ON NAMEPLATE.
- 3. WIRE LEADS: 14 AWG, 12" LONG FROM MOTOR SHELL, 1/4" END STRIP.
WIRES ARE TO BE LOOPED AND KEPT INSIDE JUNCTION BOX.



WEG PART #	SAP#	VOLTS	SPEED	H.P.	AMPS	TORQUE	ENCL.	FRAME	INSUL.	DIM 'A'	DIM 'B'	DIM 'C'	DIM 'D'	DIM 'E'
MT-031	14461554	90 D.C.	1750 R.P.M.	0.25	2.6	9 IN-LBS	TEFC	56C	F	9.63"	5.71"	11.57"	Ø4.45"	Ø5.0"
MT-032	14461730	90 D.C.	1750 R.P.M.	0.50	5.3	18 IN-LBS	TEFC	56C	F	10.25"	6.10"	12.20"	Ø4.45"	Ø5.0"
MT-033	14461731	90 D.C.	1750 R.P.M.	0.33	3.7	12 IN-LBS	TEFC	56C	F	9.63"	5.71"	11.57"	Ø4.45"	Ø5.0"
MT-034	14461734	90 D.C.	1750 R.P.M.	1.0	10.0	36 IN-LBS	TEFC	56C	F	12.34"	8.17"	14.30"	Ø4.93"	Ø5.5"
MT-035	14461735	90 D.C.	1750 R.P.M.	0.75	7.8	27 IN-LBS	TEFC	56C	F	11.67"	6.79"	13.70"	Ø4.93"	Ø5.5"
MT-037	14461736	180 D.C.	1750 R.P.M.	1.0	5.0	36 IN-LBS	TEFC	56C	F	12.34"	8.17"	14.30"	Ø4.93"	Ø5.5"
MT-041	14461750	180 D.C.	1750 R.P.M.	0.25	1.5	9 IN-LBS	TEFC	56C	F	9.63"	5.71"	11.57"	Ø4.45"	Ø5.0"
MT-042	14461751	180 D.C.	1750 R.P.M.	0.33	1.9	12 IN-LBS	TEFC	56C	F	9.63"	5.71"	11.57"	Ø4.45"	Ø5.0"
MT-043	14461752	180 D.C.	1750 R.P.M.	0.50	2.5	18 IN-LBS	TEFC	56C	F	10.25"	6.10"	12.20"	Ø4.45"	Ø5.0"
MT-044	14461753	180 D.C.	1750 R.P.M.	0.75	3.9	27 IN-LBS	TEFC	56C	F	11.67"	6.79"	13.70"	Ø4.93"	Ø5.5"
MT-073	15343595	12 D.C.	1750 R.P.M.	1.0	80.0	36 IN-LBS	TEFC	56C	F	12.63"	8.25"	14.60"	Ø4.84"	Ø5.0"
MT-074	15343597	24 D.C.	1750 R.P.M.	1.0	40.0	36 IN-LBS	TEFC	56C	F	12.63"	8.25"	14.60"	Ø4.84"	Ø5.0"
MT-079	16495341	90 D.C.	2500 R.P.M.	0.75	7.8	19 IN-LBS	TEFC	56C	F	10.25"	6.10"	12.20"	Ø4.45"	Ø5.0"
MT-080	16495342	180 D.C.	2500 R.P.M.	0.75	3.8	19 IN-LBS	TEFC	56C	F	10.25"	6.10"	12.20"	Ø4.45"	Ø5.0"
MT-084	18090270	90 D.C.	2500 R.P.M.	0.25	2.6	9 IN-LBS	TEFC	56C	F	9.63"	5.71"	11.57"	Ø4.45"	Ø5.0"
MT-085	18090271	90 D.C.	2500 R.P.M.	0.50	5.3	18 IN-LBS	TEFC	56C	F	10.25"	6.10"	12.20"	Ø4.45"	Ø5.0"
MT-086	18090272	90 D.C.	2500 R.P.M.	1.0	10.0	36 IN-LBS	TEFC	56C	F	12.34"	8.17"	14.30"	Ø4.93"	Ø5.5"
MT-087	18090273	180 D.C.	2500 R.P.M.	1.0	5.0	36 IN-LBS	TEFC	56C	F	12.34"	8.17"	14.30"	Ø4.93"	Ø5.5"

UNLESS OTHERWISE SPECIFIED: TOLERANCE - DECIMAL	
.XX	±.015
.XXX	±.005
.XXXX	±.002
ANGLE	±1/2°

GROSS WEIGHT		NET WEIGHT		SCALE		N/A	
500002691644	02	ADDED MOTORS TO CHART		COGINSKI	RAFAELAMS	RAFAELAMS	15.10.2024 02
500002661792	01	REVISED-ADDED NOTES + MOTORS TO CHART		COGINSKI	RAFAELAMS	RAFAELAMS	12.07.2024 01
ECM	LOC	SUMMARY OF MODIFICATIONS		EXECUTED	CHECKED	RELEASED	DATE VER
EXECUTED	COGINSKI		MT MOTORS	10011955408			
CHECKED	JCOLLINS		MT MOTORS	000	02		
RELEASED	JCOLLINS						
REL DT	14.03.2024	WBL	MCHENRY	ENGINEERING	SHEET	/	