

1

2

3

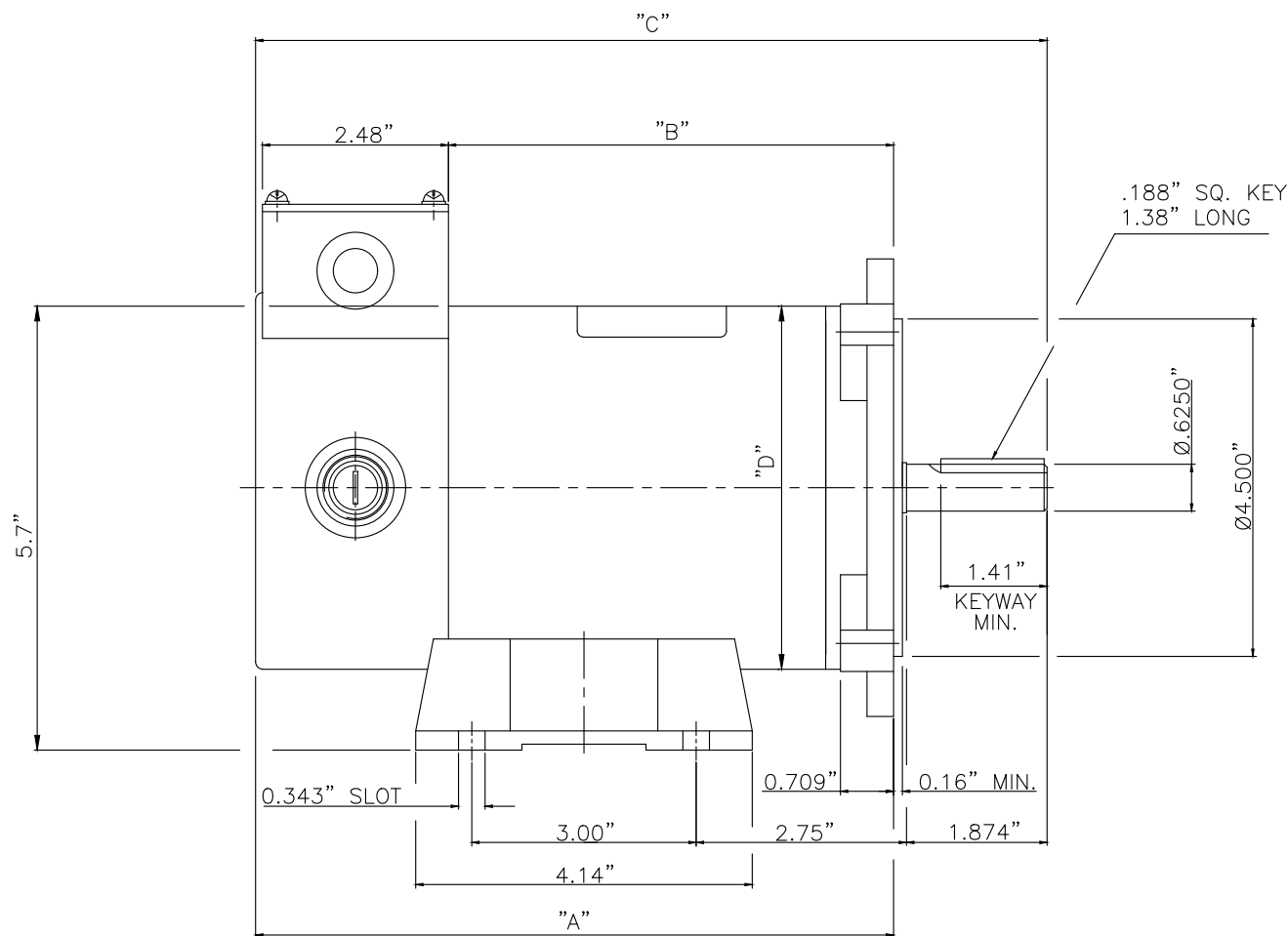
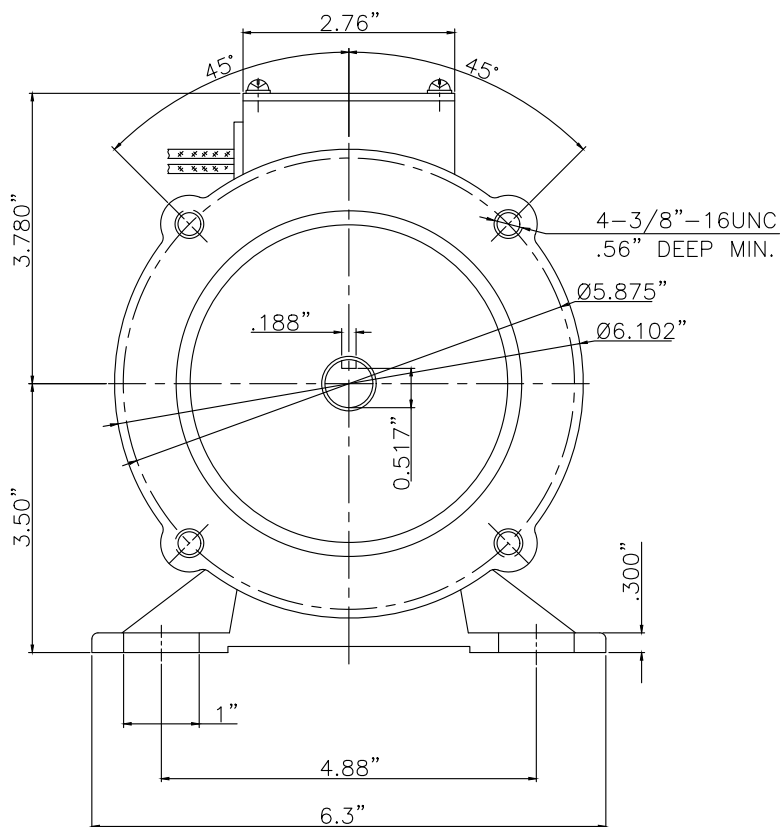
4

5

6

NOTES:

- 1. COLOR & FINISH: BLUE SEMI-GLOSS.
- 2. NAMEPLATE TO BE APPLIED ON TOP OF MOTOR - AS SHOWN.
COUNTRY OF ORIGIN TO APPEAR ON NAMEPLATE - PER RESOLUTION 19 CFR PART 134.
MANUFACTURER UL FILE # TO APPEAR ON NAMEPLATE.
MANUFACTURER SERIAL # & MANUFACTURING DATE CODE TO APPEAR ON NAMEPLATE.
- 3. WIRE LEADS: 14 AWG, 12" LONG FROM MOTOR SHELL, 1/4" END STRIP.
WIRES ARE TO BE LOOPED AND KEPT INSIDE JUNCTION BOX.



UNLESS OTHERWISE SPECIFIED: TOLERANCE - DECIMAL	
.XX	±.015
.XXX	±.005
.XXXX	±.002
ANGLE	±1/2°

WEG PART #	SAP#	VOLTS	SPEED	H.P.	AMPS	TORQUE	ENCL.	FRAME	INSUL.	DIM 'A'	DIM 'B'	DIM 'C'	DIM 'D'
MT-065	15420804	12 D.C.	1750 R.P.M.	0.25	21.0	9 IN-LBS	TENV	56C	F	7.80"	5.25"	9.80"	Ø4.45"
MT-067	16432935	12 D.C.	1750 R.P.M.	0.33	27.0	12 IN-LBS	TENV	56C	F	7.80"	5.25"	9.80"	Ø4.45"
MT-068	16433028	24 D.C.	1750 R.P.M.	0.33	13.5	12 IN-LBS	TENV	56C	F	7.80"	5.25"	9.80"	Ø4.45"
MT-069	15343590	12 D.C.	1750 R.P.M.	0.50	39.0	18 IN-LBS	TENV	56C	F	8.66"	6.10"	10.66"	Ø4.45"
MT-070	15343591	24 D.C.	1750 R.P.M.	0.50	20.0	18 IN-LBS	TENV	56C	F	8.66"	6.10"	10.66"	Ø4.45"

GROSS WEIGHT		NET WEIGHT		SCALE		N/A	
500002661792	00	CREATED DOCUMENT		COGINSKI	RAFAELAMS	RAFAELAMS	12.07.2024 00
ECM	LOC	SUMMARY OF MODIFICATIONS		EXECUTED	CHECKED	RELEASED	DATE VER
EXECUTED	COGINSKI	MT MOTORS MT MOTORS		10012268845			
CHECKED	RAFAELAMS			000	00		
RELEASED	RAFAELAMS						
REL DT	12.07.2024	WBL	MCHENRY	ENGINEERING	SHEET	/	