

1

2

3

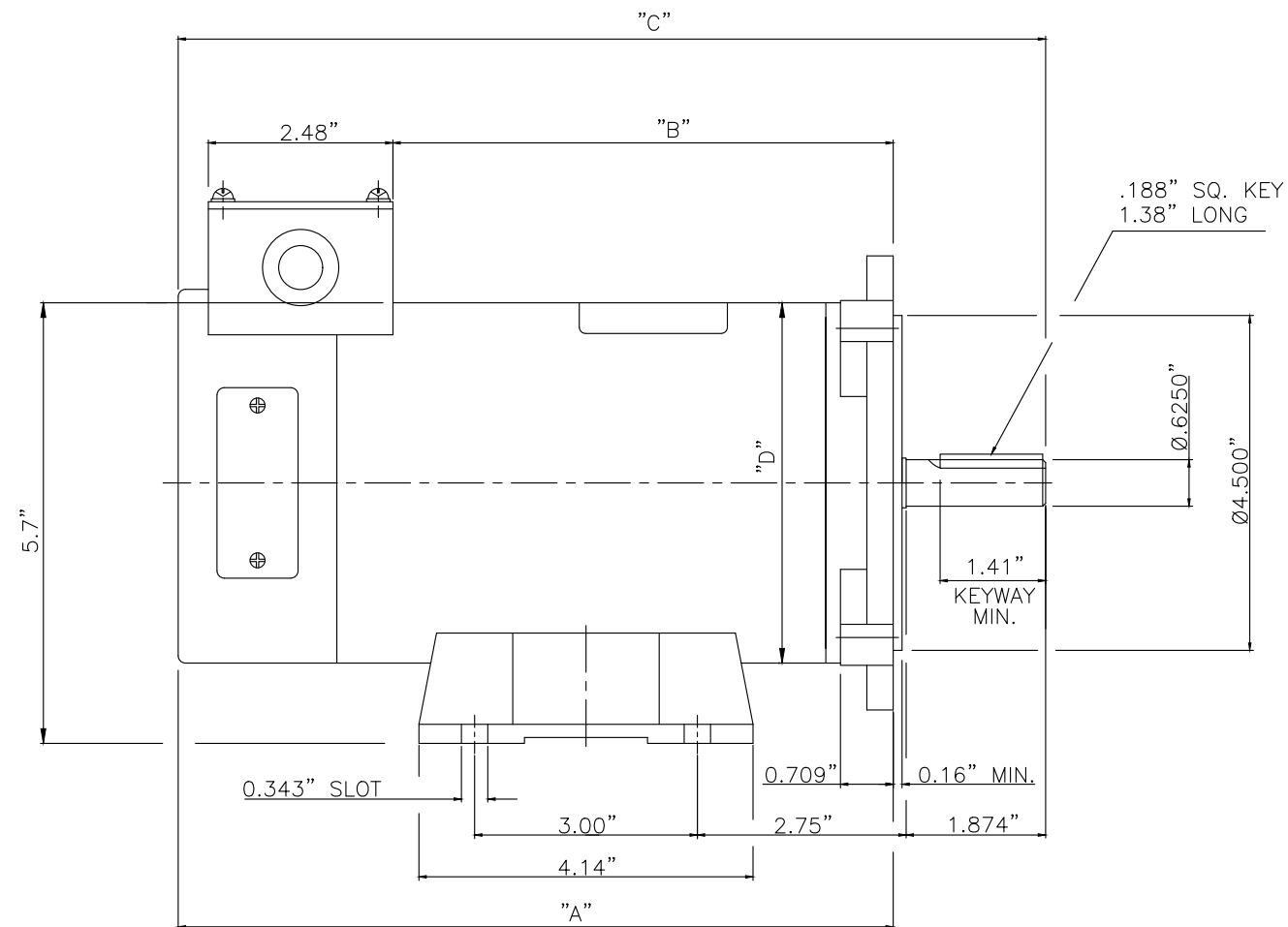
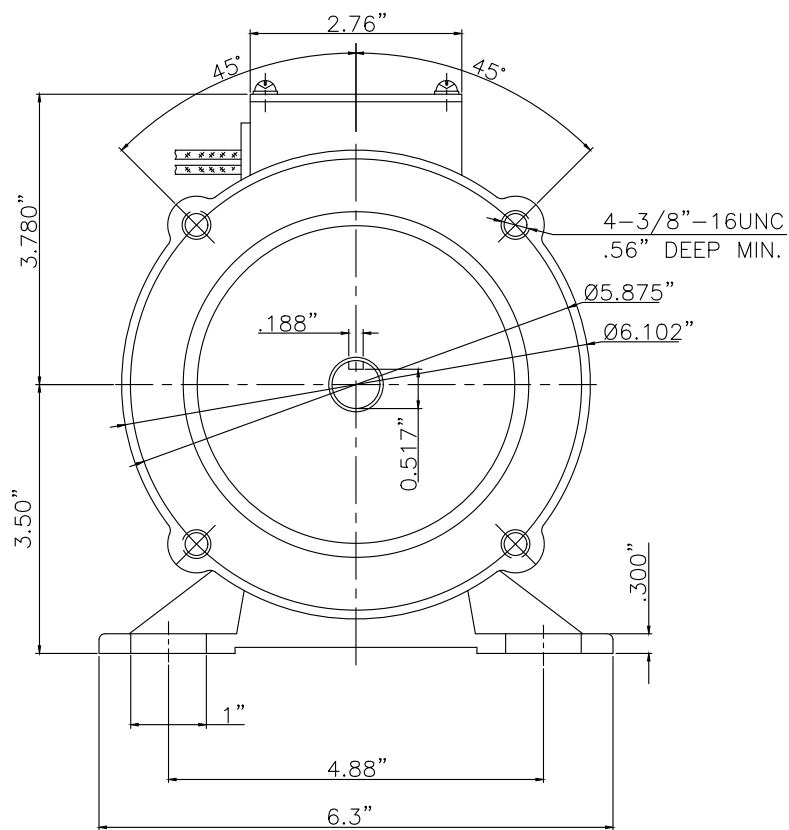
4

5

6

NOTES:

- 1. COLOR & FINISH: BLUE SEMI-GLOSS.
- 2. NAMEPLATE TO BE APPLIED ON TOP OF MOTOR - AS SHOWN.  
COUNTRY OF ORIGIN TO APPEAR ON NAMEPLATE - PER RESOLUTION 19 CFR PART 134.  
MANUFACTURER UL FILE # TO APPEAR ON NAMEPLATE.  
MANUFACTURER SERIAL # & MANUFACTURING DATE CODE TO APPEAR ON NAMEPLATE.
- 3. WIRE LEADS: 14 AWG, 12" LONG FROM MOTOR SHELL, 1/4" END STRIP.  
WIRES ARE TO BE LOOPED AND KEPT INSIDE JUNCTION BOX.



UNLESS OTHERWISE SPECIFIED: TOLERANCE - DECIMAL	
.XX	±.015
.XXX	±.005
.XXXX	±.002
ANGLE	±1/2°

GROSS WEIGHT		NET WEIGHT		SCALE		N/A		
500002661792	00	CREATED DOCUMENT		COGINSKI	RAFAELAMS	RAFAELAMS	12.07.2024	00
ECM	LOC	SUMMARY OF MODIFICATIONS		EXECUTED	CHECKED	RELEASED	DATE	VER
EXECUTED	COGINSKI	MT MOTORS		10012269046				
CHECKED	RAFAELAMS	MT MOTORS		000		00		
RELEASED	RAFAELAMS							
REL DT	12.07.2024	WBL	MCHENRY	ENGINEERING	SHEET	/		

WEG PART #	SAP#	VOLTS	SPEED	H.P.	AMPS	TORQUE	ENCL.	FRAME	INSUL.	DIM 'A'	DIM 'B'	DIM 'C'	DIM 'D'
MT-071	15343592	12 D.C.	1750 R.P.M.	0.75	58.0	27 IN-LBS	TENV	56C	F	9.84"	6.80"	11.85"	Ø4.84"
MT-072	15343594	24 D.C.	1750 R.P.M.	0.75	29.0	27 IN-LBS	TENV	56C	F	9.84"	6.80"	11.85"	Ø4.84"