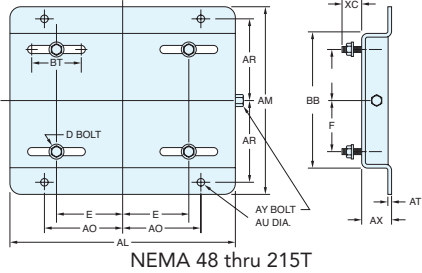
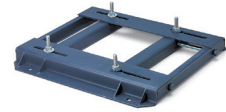


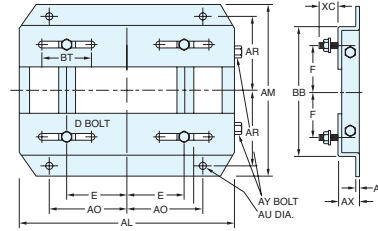
### Adjustable Motor Bases - NEMA 48-447T Frames

Heavy gauge steel mounting bases simplify the installation of motors and make the tensioning, maintenance and replacement of belts a simple efficient task. Fabricated from sheet or steel plate, then primed and finished in a gray rust and corrosion resistant oven-baked finish. Gussets and reinforcing channels on larger units and continuous seam welding on all units give these bases

strength and durability for a long life. A single (215T frame and smaller) or double (NEMA 254T frame and larger) zinc plated adjusting screw is provided. Motor mounting bolts are included. Adjustable motor bases are designed to mount to your existing motor's base.



NEMA 48 thru 215T



NEMA 254T thru 447T

Frame	List Price	Catalog Number	AL	AM	AX	BB	E	F	AO	AR	AU**	BT	AT	XC	D* Bolt	AY Bolt	App. Wgt. (lbs.)
48	83	175032.00	10	6 1/4	1 1/8	4 1/4	2 1/8	1 3/8	3 1/2	2 3/4	3/8	3.00	0.08	7/8	5/16 x 1	3/8 x 4	2
56	83	175033.00	10 5/8	6 1/2	1 1/8	4 1/2	2 7/16	1 1/2	3 1/16	2 7/8	3/8	3.00	0.08	7/8	5/16 x 1	3/8 x 4	3
143T	99	175034.00	10 1/2	7 1/2	1 1/8	5 1/2	2 3/4	2	3 3/4	3 3/8	3/8	3.00	0.12	1 1/16	5/15 x 1	3/8 x 4	5
145T	99	175035.00	10 1/2	8 1/2	1 1/8	6 1/2	2 3/4	2 1/2	3 3/4	3 7/8	3/8	3.00	0.12	1 3/16	5/15 x 1	3/8 x 4	6
182T	128	175036.00	12 2/4	9 1/2	1 1/2	6 1/2	3 3/4	2 1/4	4 1/2	4 1/4	1/2	3.00	0.13	1 1/2	3/8 x 1 3/4	1/2 x 5	9
184T	128	175037.00	12 2/4	10 1/2	1 1/2	7 1/2	3 3/4	2 3/4	4 1/2	4 3/4	1/2	3.00	0.13	1 1/2	3/8 x 1 3/4	1/2 x 5	9
213T	158	175038.00	15	11	1 3/4	7 1/2	4 1/4	2 3/4	5 1/4	4 3/4	1/2	3 1/2	0.16	1 1/2	3/8 x 1 3/4	1/2 x 5	13
215T	158	175039.00	15	12 1/2	1 3/4	9	4 1/4	3 1/2	5 1/4	5 1/2	1/2	3 1/2	0.16	1 1/2	3/8 x 1 3/4	1/2 x 5	15
254T	241	175040.00	17 3/4	15 1/8	2	10 3/4	5	4 1/8	6 1/4	6 3/8	5/8	4.00	3/16	1 7/16	1/2 x 1 3/4	5/8 x 6	17
256T	241	175041.00	17 3/4	16 3/8	2	12 1/2	5	5	6 1/4	7 1/2	5/8	4.00	3/16	1 7/16	1/2 x 1 3/4	5/8 x 6	18
284T	262	175042.00	19 3/4	16 7/8	2	12 1/2	5 1/2	4 3/4	7	7 1/2	5/8	4 1/2	3/16	1 11/16	1/2 x 2	5/8 x 6	21
286T	262	175043.00	19 3/4	18 3/8	2	14	5 1/2	5 1/2	7	8 1/4	5/8	4 1/2	3/16	1 11/16	1/2 x 2	5/8 x 6	22
324T	346	175044.00	22 3/4	19 1/4	2 1/2	14	6 1/4	5 1/4	8	8 1/2	3/4	5 1/4	3/16	2 3/16	5/8 x 2 1/2	3/4 x 9	31
326T	346	175045.00	22 3/4	20 3/4	2 1/2	15 1/2	6 1/4	6	8	9 1/4	3/4	5 1/4	3/16	2 3/16	5/8 x 2 1/2	3/4 x 9	32
364T	456	175046.00	25 1/2	20 1/2	2 1/2	15 1/2	7	5 3/8	9	9 1/8	3/4	6.00	1/4	2 1/16	5/8 x 2 1/2	3/4 x 9	44
365T	456	175047.00	25 1/2	21 1/2	2 1/2	16 1/2	7	6 1/8	9	9 3/8	3/4	6.00	1/4	2 1/16	5/8 x 2 1/2	3/4 x 9	45
404T	820	175048.00	28 3/4	22 3/8	3	16 1/2	8	6 1/8	10	9 7/8	7/8	7.00	1/4	2 1/2	3/4 x 3	3/4 x 11	60
405T	820	175049.00	28 3/4	23 3/8	3	18	8	6 1/8	10	10 3/8	7/8	7.00	1/4	2 1/2	3/4 x 3	3/4 x 11	61
444T	1015	175088.00	31 1/4	24 3/8	3	19 1/4	9	7 1/4	11	11.0	7/8	7 1/2	1/4	2 1/2	3/4 x 3	3/4 x 11	68
445T	1015	175089.00	31 1/4	26 3/8	3	21 1/4	9	8 1/4	11	12.0	7/8	7 1/2	1/4	2 1/2	3/4 x 3	3/4 x 11	73
447T	1119	175090.00	31 1/4	30 1/8	3	24 3/4	9	10	11	13 3/4	7/8	7 1/2	5/16	3	3/4 x 3 1/2	3/4 x 11	92
449T	1119	175302.00	31 1/4	35 1/8	3	29 3/4	9	12 1/2	11	16 1/4	7/8	7 1/2	5/16	3	3/4 x 3 1/2	3/4 x 11	95

\* Motor mounting bolt diameter and length, four supplied with each base.  
 \*\* Base mounting bolts, four required—not supplied with base.

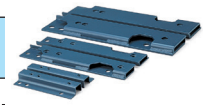
Specifications are subject to change without notice  
 NOTE: These bases are not suitable for vertical mounting. All dimensions in inches.

### Transition Bases

Transition bases compensate for the difference in mounting dimensions and shaft height of a rigid base NEMA T frame to the next higher NEMA U frame. This makes it possible, for example, to replace a 10 HP NEMA 254U frame motor with a 10 HP NEMA 215T frame motor without modifying the basic installation. Made of the same high-quality materials and construction as the

adjustable motor bases above. They are for horizontal mountings, shimming may be needed for direct coupled loads. Thread size listed is for mounting transition base to the "T" frame motor. Dimensions listed are for one piece—two are supplied, one for each side of the motor's foot.

Converts T Frame	To U Frame	Catalog Number	List Price	App. Wgt. (lbs.)	Height (Inches)	Width (Inches)	Length (Inches)	Thread
143T/145T	182/184	175091.00	84	2	1	2 1/4	7 1/2	5/16-18
182T/184T	213/215	175092.00	122	3	3/4	1 3/4	9 1/2	3/8-16
213T/215T	254U/256U	175093.00	144	5	1	2 7/16	12 3/4	3/8-16
254T/256T	284U/286U	175094.00	202	8	3/4	2 3/4	14 1/4	1/2-13
284T/286T	324U/326U	175095.00	269	10	1	3 1/4	15 3/4	1/2-13
324T/326T	364U/365U	175097.00	341	13	1	3 11/16	16 1/2	5/8-11
364T/365T	404U/405U	175098.00	456	22	1	4 1/4	18 5/8	5/8-11
404T/405T	444U/445U	175127.00	583	24	1	4 1/4	21 5/8	3/4-10



Specifications are subject to change without notice



- IEC Motors
- DC Motors
- Gearmotors
- AC / DC Controls
- Accessories / Kits
- Mods / Factory Options
- X-Ref / Index
- Tech Information
- Terms / Warnings