

**PESS215TC10M-2**

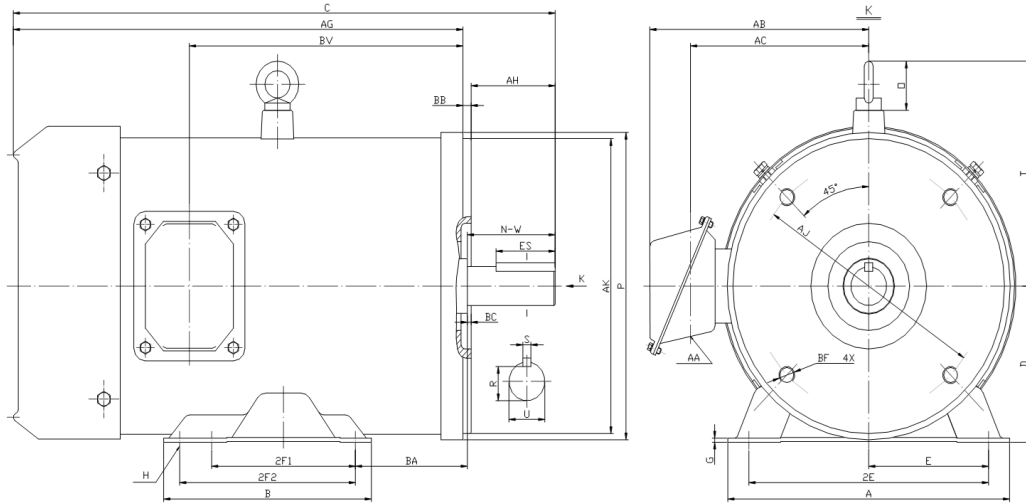
**WASHDOWN DUTY MOTOR**

**NEMA PREMIUM EFFICIENCY**

**STAINLESS STEEL CONSTRUCTION - C-FLANGE WITH FEET**

**TOTALLY ENCLOSED FAN COOLED - IP66 CONSTRUCTION**

**INVERTER DUTY 10:1 CT; 20:1 VT - NEMA MG1 PART 31**



**DIMENSIONS**

HP	RPM	Frame	Mounting													
			A	B	C	D	G	H	E	2E	2F1	2F2	P	AK	AJ	AH
10	3600	215TC	9.60	8.10	20.70	5.25	0.16	0.41	4.25	8.50	5.50	7.00	10.08	8.500	7.250	3.12

Mounting				Shaft Extension, Key Set						Conduit Box				Bearings		Mount
AG	BA	BB	BC	BF	U	R	S	ES	N-W	AA	AB	AC	BV	DE	ODE	
17.33	4.25	0.25	0.25	4*1/2-13	1.375	1.201	0.312	2.41	3.38	0.94	7.70	6.20	11.35	6308-2RS	6208-2RS	F1

**BEARING LUBRICATION:** The bearings come lubricated with Mobil Polyrex EM Polyurea Grease.



## PESS215TC10M-2



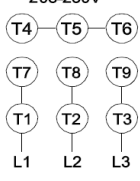
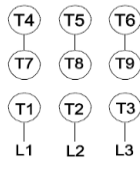




**WASHDOWN DUTY MOTOR**  
**NEMA PREMIUM EFFICIENCY**  
**STAINLESS STEEL CONSTRUCTION - C-FLANGE WITH FEET**  
**TOTALLY ENCLOSED FAN COOLED - IP66 CONSTRUCTION**  
**INVERTER DUTY 10:1 CT; 20:1 VT - NEMA MG1 PART 31**

### PERFORMANCE DATA

HP	RPM	Frame	Voltage	Frequency (Hz)	Full Load S.F.	Insulation Class	NEMA Design	Slip (%)	NEMA Code	Enclosure Type	IP Rating	Max. Ambient
10	3525	215TC	208-230/460	60	1.15	F	B	2.1	H	TEFC	66	40° C

Amps (460V)		Efficiency (%)				Power Factor			Torque (ft-lb)			DE Bearing	ODE Bearing	Connection	Weight (lbs.)
FLA	LRA	100%	75%	50%	Min.	100%	75%	50%	FLT	LRT %	BDT %				
12.2	81.0	90.2	90.0	89.0	88.5	0.87	0.82	0.72	14.7	250	270	6308-2RS	6208-2RS	9 Lead 2Y/Y	166

### NAME PLATE

 <b>North American Electric, Inc.</b>													<b>CONNECTION DIAGRAMS</b>  <b>208-230V</b> 						
<b>INVERTER DUTY 20:1 VT; 10:1 CT</b>										<b>WASHDOWN DUTY STAINLESS STEEL MOTORS</b>									
CAT NO:		PESS215TC10M-2				FRAME		215TC		PHASE		3		<b>460V</b> 					
HZ	60	S.F.	1.15	HZ	50	S.F.	1.0	ENCL	TEFC	IP	66								
HP	10	RPM	3525	HP	10	RPM	2920	DUTY	CONT	DES	B								
VOLTS		208-230/460				VOLTS		190/380		AMB	40° C	INS	F						
FLA	26 - 24.4 / 12.2		FLA				29/14.5		DE BEARING		6308-2RS								
CODE	H	P.F.	0.87	CODE	H	P.F.	0.89	ODE BEARING		6208-2RS									
EFF	90.2	MIN	88.5	EFF	88.5	MIN	86.5	LUB:		Mobil Polyrex EM									
MOTOR WEIGHT		166	LBS	CONNECTION		9 Lead 2Y/Y		SER NO											
Special purpose motor designed for washdown applications and extremely corrosive environments. Hernando, Mississippi																			

### APPLICATIONS:

Applications include washdown applications, food processing, chemical processing, pharmaceuticals, poultry processing, meat processing, dairy applications, bakeries, snack foods, bottling and extremely corrosive environments.