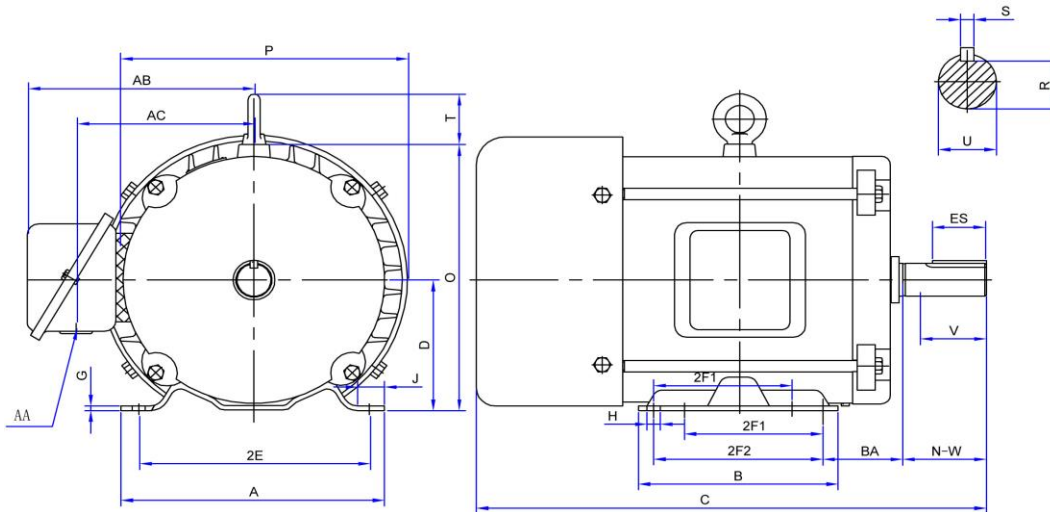


PR215T10M4A

**GENERAL PURPOSE ELECTRIC MOTOR
 HIGH EFFICIENCY / EISA COMPLIANT
 TOTALLY ENCLOSED FAN COOLED
 ROLLED STEEL CONSTRUCTION
 INVERTER RATED (10:1 VT; 5:1 CT)**



DIMENSIONS

HP	RPM	Frame	MOUNTING														
			A	B	C	D	G	H	J	E	2E	2F1	2F2	O	P	T	BA
10	1800	215T	10.40	8.50	19.00	5.25	0.16	0.45	1.61	4.25	8.50	5.50	7.00	10.60	11.60	2.00	3.50

Shaft Extension, Key Set						Conduit Box		Bearings		Mount
U	V	R	S	ES	N-W	AA	AB	DE	ODE	
1.375	3.00	1.201	0.312	2.38	3.38	1.38	8.50	6307-2RZC3	6206-2RZC3	F1

BEARING LUBRICATION: The bearings come lubricated with Mobil Polyrex EM Polyurea Grease.





PR215T10M4A

GENERAL PURPOSE ELECTRIC MOTOR
HIGH EFFICIENCY / EISA COMPLIANT
TOTALLY ENCLOSED FAN COOLED
ROLLED STEEL CONSTRUCTION
INVERTER RATED (10:1 VT; 5:1 CT)

PERFORMANCE DATA

HP	RPM	Frame	Voltage	Frequency (Hz)	Full Load S.F.	Insulation Class	NEMA Design	Slip (%)	NEMA Code	Enclosure Type	IP Rating	Max. Ambient
10	1750	215T	208-230/460	60	1.15	F	B	2.8	G	TEFC	IP55	40°C

Amps (460V)		Efficiency (%)			Power Factor			Torque (ft-lb)			DE Bearing	ODE Bearing	Connection	Weight (lbs.)
FLA	LRA	100%	75%	50%	100%	75%	50%	FLT	LRT %	BDT %				
12.6	76.8	91.7	91.4	91.1	0.81	0.77	0.68	30.22	199	270	6307-2RZC3	6206-2RZC3	9 Lead 2Y/Y	149

NAME PLATE											
THREE PHASE ELECTRIC MOTOR											
MODEL	HP	10	RPM	1750	FRAME	215T					
PR215T10M4A	ENCL	TEFC	HZ	60	PHASE	3					
VOLT	208-230/460	AMPS	27.5-25.2/12.6	S.F.	1.15	DESIGN	B				
S.F.	31.6-28.9/14.4	CLASS	F	CODE	G	LBS	149				
DE BEARING	6307-2RZC3		<div style="display: flex; justify-content: space-around;"> <div style="text-align: center;"> <p>208-230V</p> </div> <div style="text-align: center;"> <p>460V</p> </div> </div>								
ODE BEARING	6206-2RZC3										
RATING	CONT	MAX AMB.	40°C								
SER											
Hernando, MS www.naemotors.com											
CC 0998											

APPLICATIONS:

General purpose use on pumps, fans, blowers, compressors, conveyors, material handling and other industrial machinery installed in damp, dusty or dirty environments.