

**SS56C1/3M-2-RB**

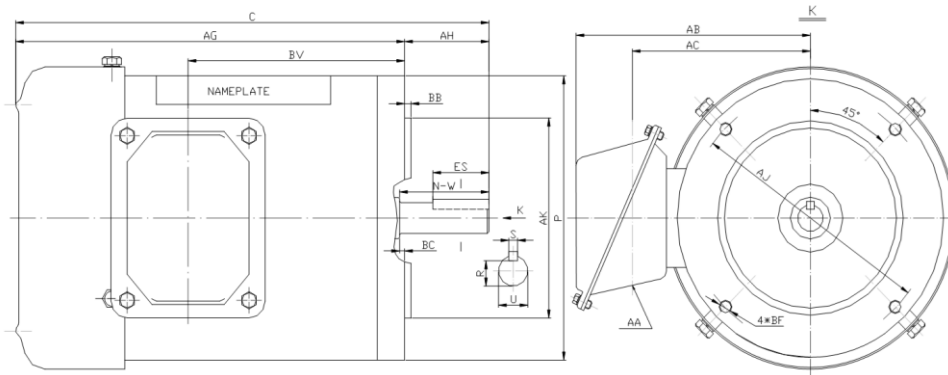
**WASHDOWN DUTY MOTOR**

**HIGH EFFICIENCY / EISA COMPLIANT**

**STAINLESS STEEL CONSTRUCTION - ROUND BODY (C-FLANGE FOOTLESS)**

**TOTALLY ENCLOSED FAN COOLED - IP66 CONSTRUCTION**

**INVERTER DUTY 10:1 CT; 20:1 VT - NEMA MG1 PART 31**



DIMENSIONS													
HP	RPM	Frame	Mounting										
			C	P	AK	AJ	AH	AG	BA	BB	BC	BF	
1/3	3600	56C	11.59	6.50	4.500	5.875	2.06	9.53	0.16	N/A	9.53	4*3/8-16	

Shaft Extension, Key Set					Conduit Box				Bearings		Mount
U	R	S	ES	N-W	AA	AB	AC	BV	DE	ODE	
0.625	0.517	0.188	1.41	1.88	0.86	5.75	4.25	5.30	6205-2RS	6205-2RS	F1

**BEARING LUBRICATION:** The bearings come lubricated with Mobil Polyrex EM Polyurea Grease.





## SS56C1/3M-2-RB

**WASHDOWN DUTY MOTOR**  
**HIGH EFFICIENCY / EISA COMPLIANT**  
**STAINLESS STEEL CONSTRUCTION - ROUND BODY (C-FLANGE FOOTLESS)**  
**TOTALLY ENCLOSED FAN COOLED - IP66 CONSTRUCTION**  
**INVERTER DUTY 10:1 CT; 20:1 VT - NEMA MG1 PART 31**

### PERFORMANCE DATA

HP	RPM	Frame	Voltage	Frequency (Hz)	Full Load S.F.	Insulation Class	NEMA Design	Slip (%)	NEMA Code	Enclosure Type	IP Rating	Max. Ambient
1/3	3500	56C	208-230/460	60	1.15	F	B	2.8	K	TEFC	66	40° C

Amps (460V)		Efficiency (%)				Power Factor			Torque (ft-lb)			DE Bearing	ODE Bearing	Connection	Weight (lbs.)
FLA	LRA	100%	75%	50%	Min.	100%	75%	50%	FLT	LRT %	BDT %				
0.6	8.0	74.0	64.0	59.0	71.0	0.85	0.72	0.62	0.5	285	300	6205-2RS	6205-2RS	9 Lead 2Y/Y	26

### NAME PLATE

		<b>WASHDOWN DUTY STAINLESS STEEL MOTOR</b>				<b>CONNECTION DIAGRAMS</b>	
<b>INVERTER DUTY 20:1 VT; 10:1 CT</b>				<b>HIGH EFFICIENCY EISA COMPLIANT</b>			
CAT NO: SS56C1/3M-2-RB		FRAME 56C		PHASE 3		<b>208-230V</b> 	
HZ 60	S.F. 1.15	HZ 50	S.F. 1.0	ENCL TEFC	IP 66		
HP 1/3	RPM 3500	HP 1/3	RPM 2880	DUTY CONT	DES B		
VOLTS 208-230/460		VOLTS 190/380		AMB 40° C	INS F		
FLA 1.2 - 1.1 / 0.55	FLA 1.3/0.65		DE BEARING 6205-2RS				
CODE K	P.F. 0.85	CODE K	P.F. 0.87	ODE BEARING 6205-2RS			
EFF 74.0	MIN 71.0	EFF 71.5	MIN 69.0	LUB: Mobil Polyrex EM			
MOTOR WEIGHT 26 LBS	CONNECTION 9 Lead 2Y/Y		SER NO				
Special purpose motor designed for washdown applications and extremely corrosive environments. Hernando, Mississippi							
				<b>460V</b> 			

### APPLICATIONS:

Applications include washdown applications, food processing, chemical processing, pharmaceuticals, poultry processing, meat processing, dairy applications, bakeries, snack foods, bottling and extremely corrosive environments.