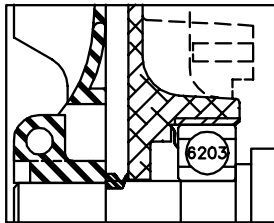
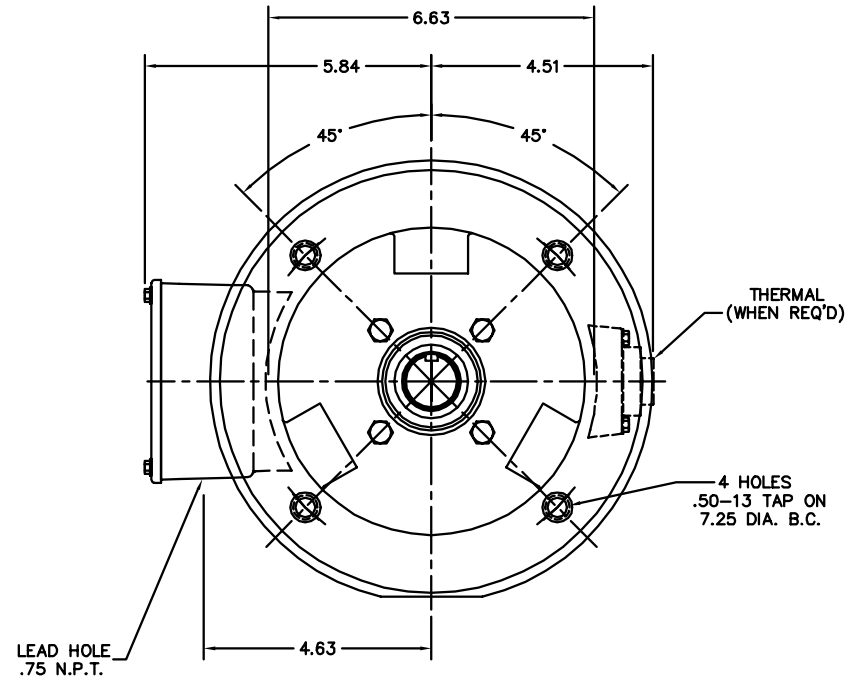
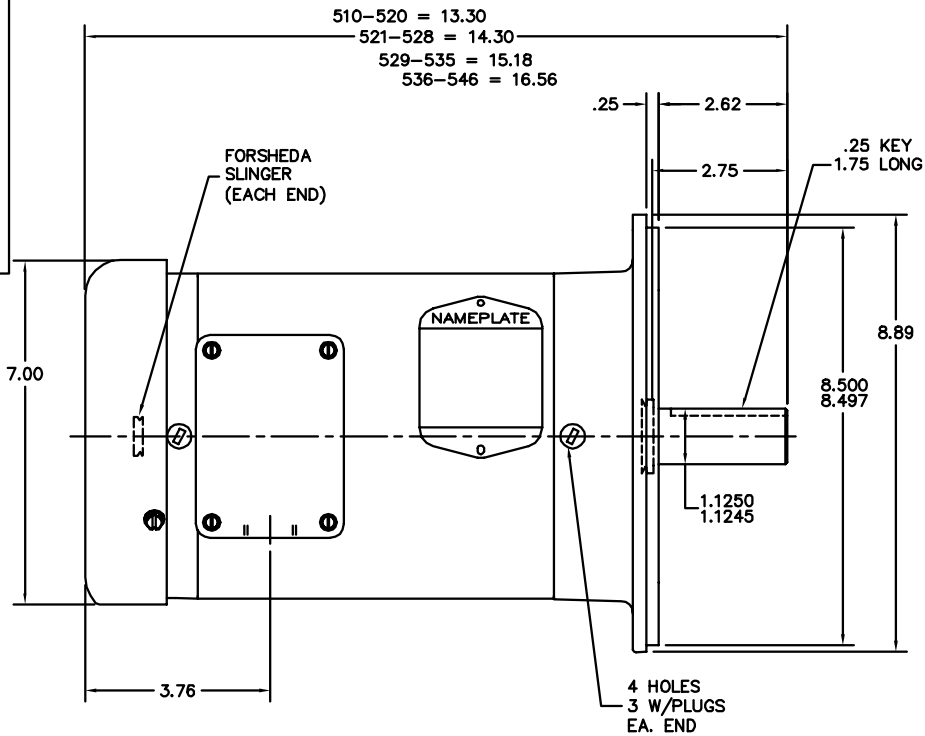
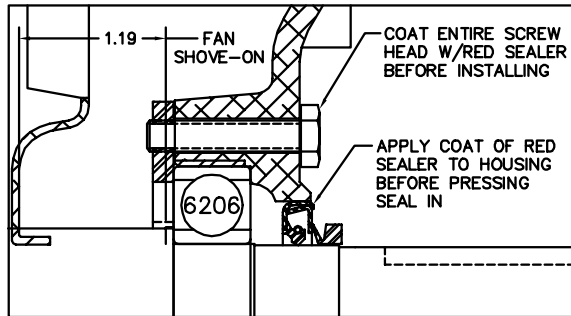


35LYSS608



FRONT END DETAIL



PULLEY END DETAIL

CUSTOMER IS RESPONSIBLE FOR DETERMINING THAT BALDOR'S PRODUCT WILL PERFORM SUITABLY IN THE INTENDED APPLICATION.

REV. DESC: CHG ODE SLINGER TO FORSHEDA	VERSION: 01	TDR: 00000801533
REV. LTR: A	REVISED: 03:35:29 05/28/2013	BY: ENADAFO
FILE: \AAA\00195\735	MTL: -	

**BALDOR**

STD VERT 182-4TC TEFC 35M WD (S/P #9) W/ .75 NPT LEAD HOLE

SH 1 of 1

35LYSS608