

UNLESS OTHERWISE SPECIFIED DIMENSIONS WITHOUT TOLERANCES ARE REFERENCE ONLY

NOTES

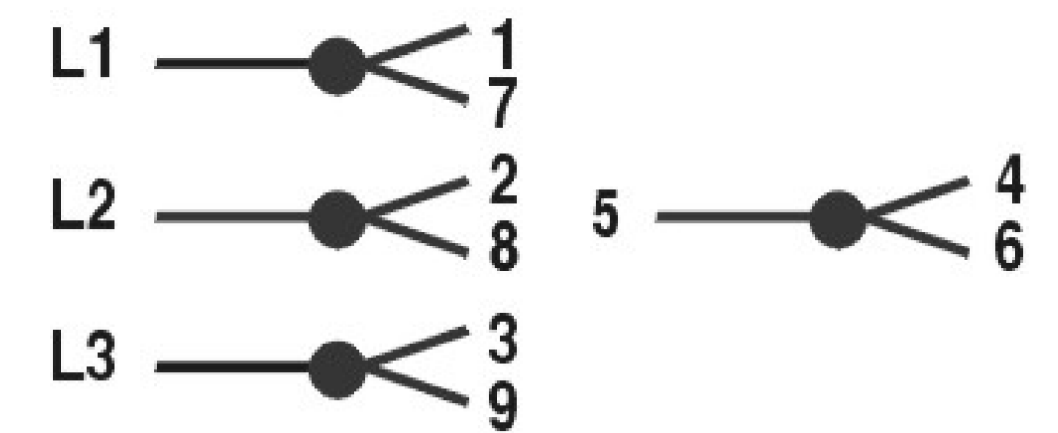
- PIPE PLUG AND SPECIAL LEAD SPLICE KIT TO BE SUPPLIED LOOSE IN CONDUIT BOX FOR ASSEMBLY BY CUSTOMER.
- LIFTING EYE BOLT IS SUPPLIED WITH THE MOTOR AND IS SHIPPED TAPED TO THE TOP OF THE CONDUIT BOX.

LEADS

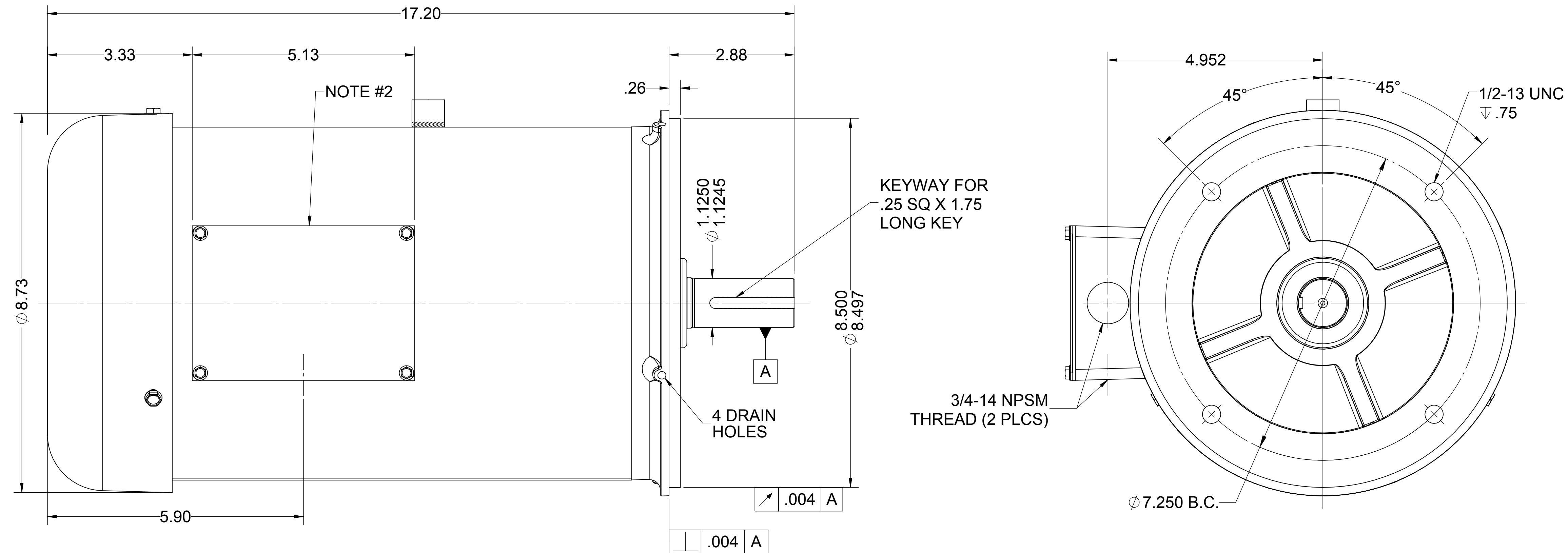
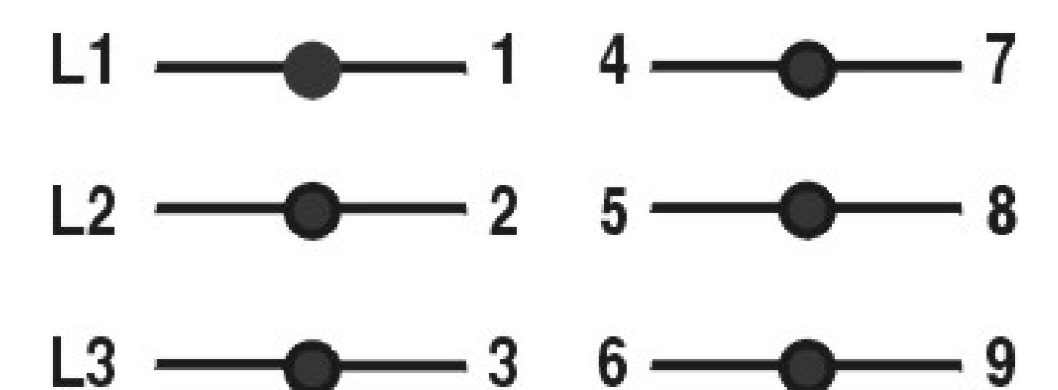
8"+2-0 INTO CONDUIT BOX WITH .44 STRIP

EXTERNAL CONNECTIONS

LOW VOLTAGE



HIGH VOLTAGE



MOTOR DATA

TYPE		POLY - INVERTER DUTY		SHAFT MATERIAL		17-4PH		CUSTOMER NAME		WEG HYDRODUTY	
HZ		60		HZ		50		FRAME		184TC	
VOLTS		230/460		VOLTS		190-220/380-415		ENCLOSURE		TEFC	
HP[kW]		5.0 [-]		SF		1.15		ENVIRONMENT		WASHDOWN	
RPM		1760		RPM		1450		I.P.CODE		IP69K	
F.L. AMPS		13.4/6.7		F.L. AMPS		13.2-13.6/6.6-6.7		NEMA NOM. EFF.		89.5%	
S.F. AMPS		15/7.5		S.F. AMPS		-		IE3		87.7%	
PHASE		3		PAINT		NONE		VIEWING LEAD END		MOTOR ROTATION	
CUSTOMER PART NUMBER		00518ET3EHDR184TC		ASSEMBLY ROTATION		CW		ASSEMBLY VOLTAGE		NONE	
THERMAL PROTECTION TYPE		NONE		MOUNTING POSITION		HORIZONTAL		WINDING AND TEST SPEC		830511	
DRAWN:		ZM 05/11/23		SCALE:		2:3		DO NOT SCALE DRAWING		SHEET 1 OF 1	

ECN	REV	CHANGE DESCRIPTION	DATE/INITIALS
	03	DRAFTING STANDARD UPDATE. CUSTOMER/CATALOG NUMBER WAS 64009. ASSEMBLY ROTATION WAS REV.	05/08/2025 ZM
THE INFORMATION DISCLOSED HEREIN INCLUDES PROPRIETARY RIGHTS OF WEG. ANY REPRODUCTION OR TRANSFERRAL OF INFORMATION FROM THIS DOCUMENT IS FORBIDDEN WITHOUT PRIOR CONSENT.			
SIZE	DWG NO.		
D	10008968411		

10008968411