

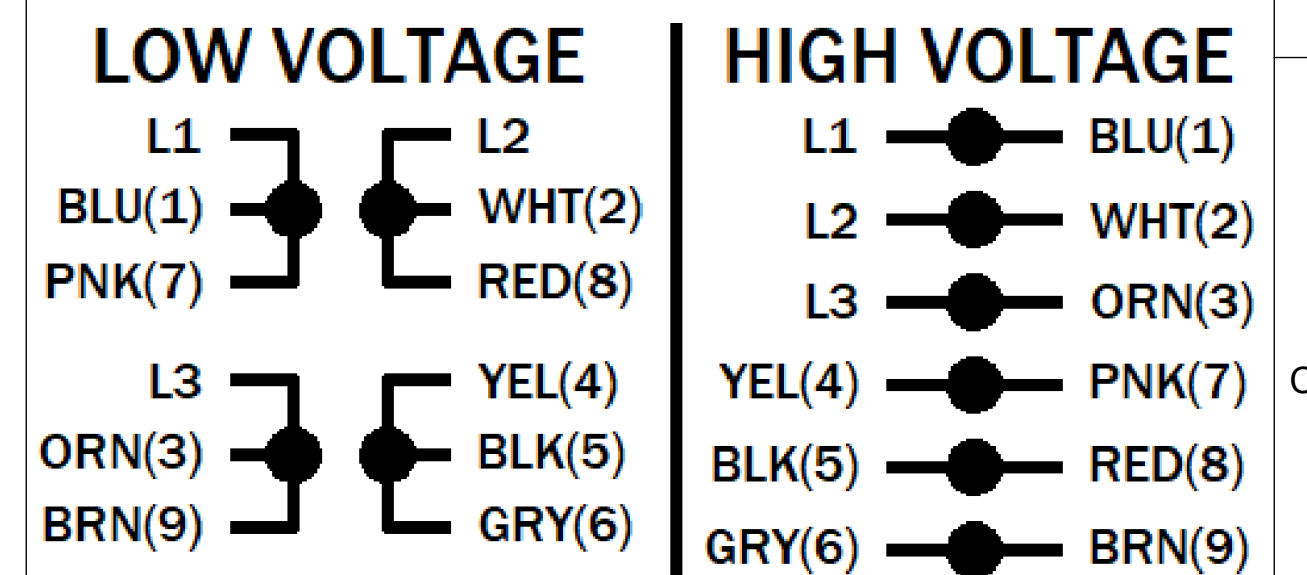
UNLESS OTHERWISE SPECIFIED DIMENSIONS WITHOUT TOLERANCES ARE REFERENCE ONLY

NOTES

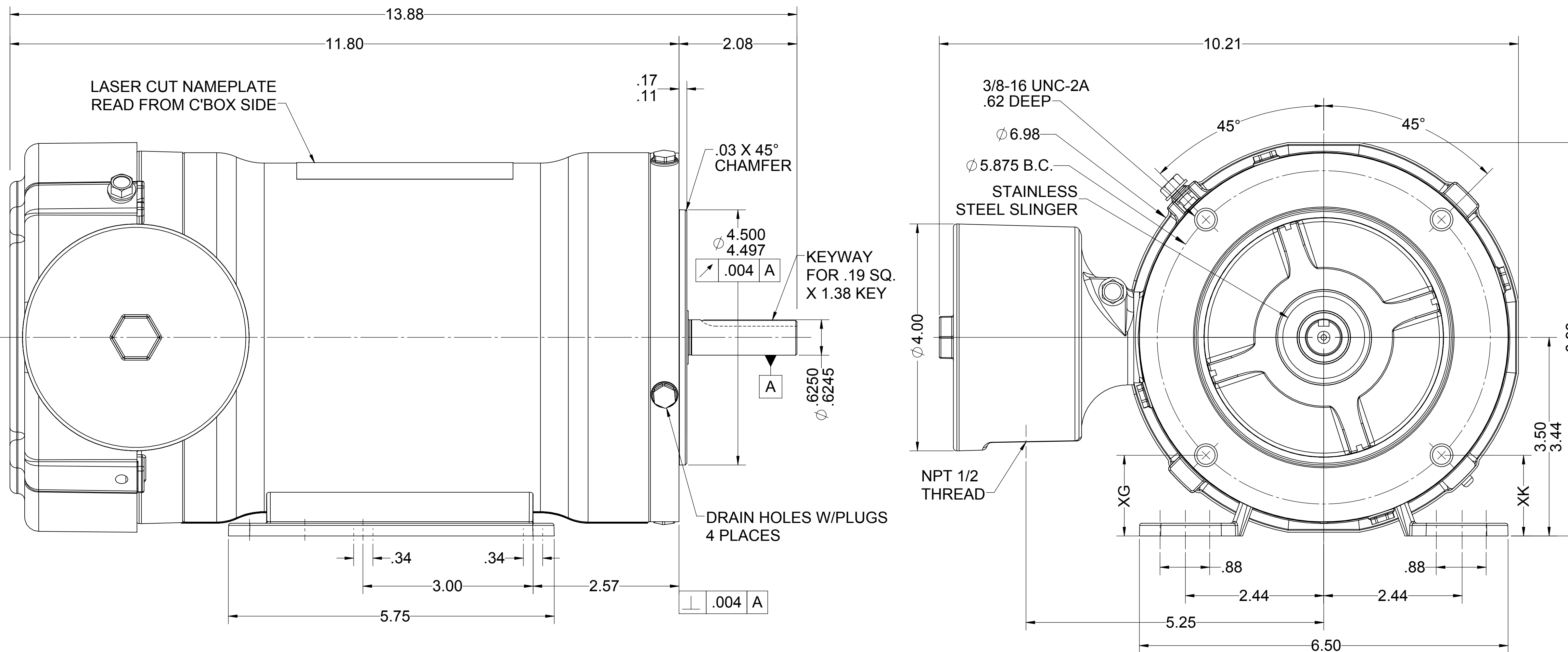
LEADS

TERMINAL BLOCK PLUS GROUND

EXTERNAL CONNECTIONS



DIFFERENCE BETWEEN XG AND XK NOT TO EXCEED .03.



MOTOR DATA

TYPE		POLY - INVERTER DUTY		SHAFT MATERIAL		303 S.S. EXTENSION		CUSTOMER NAME		WEG HYDRODUTY	
HZ		60		HZ		50		CUSTOMER PART NUMBER		00136ET3EHD56C	
VOLTS		230/460		VOLTS		190/380		VIEWING LEAD END		MOTOR ROTATION REV	
HP[kW]		1.0 [-]		SF		1.15		ENVIRONMENT		WASHDOWN	
RPM		3480		RPM		2890		BEARINGS		BALL	
F.L. AMPS		3.13/1.57		F.L. AMPS		2.97/1.48		I.P.CODE		IP69K	
S.F. AMPS		3.6/1.8		S.F. AMPS		-		END CAP		N/R	
TIME RATE		CONT		MAX AMB		40		ASSEMBLY VOLTAGE		HIGH	
KVA CODE		N		INS CLASS		F		THERMAL PROTECTION TYPE		NONE	
								MOUNTING POSITION		ALL POSITIONS	
								WINDING AND TEST SPEC		-	
								DRAWN: TR		02/05/24	

ECN	REV	CHANGE DESCRIPTION	DATE/INITIALS
	06	MOVED IE2 EFFICIENCY RATING DOWN TO MOTOR DATA FIELD.	07/28/2025 ZM
SIZE		DWG NO.	
D		10012467437	
SCALE: 3:4		DO NOT SCALE DRAWING	
		SHEET 1 OF 2	

10012467437

