

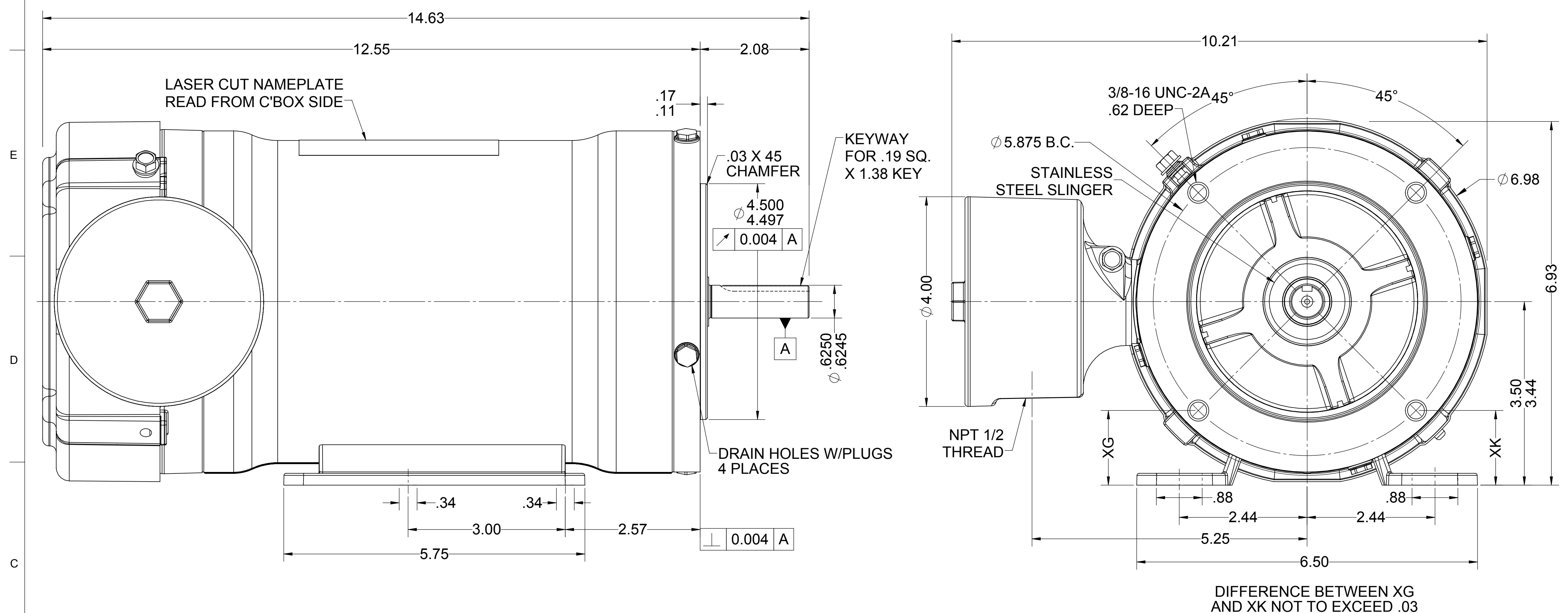
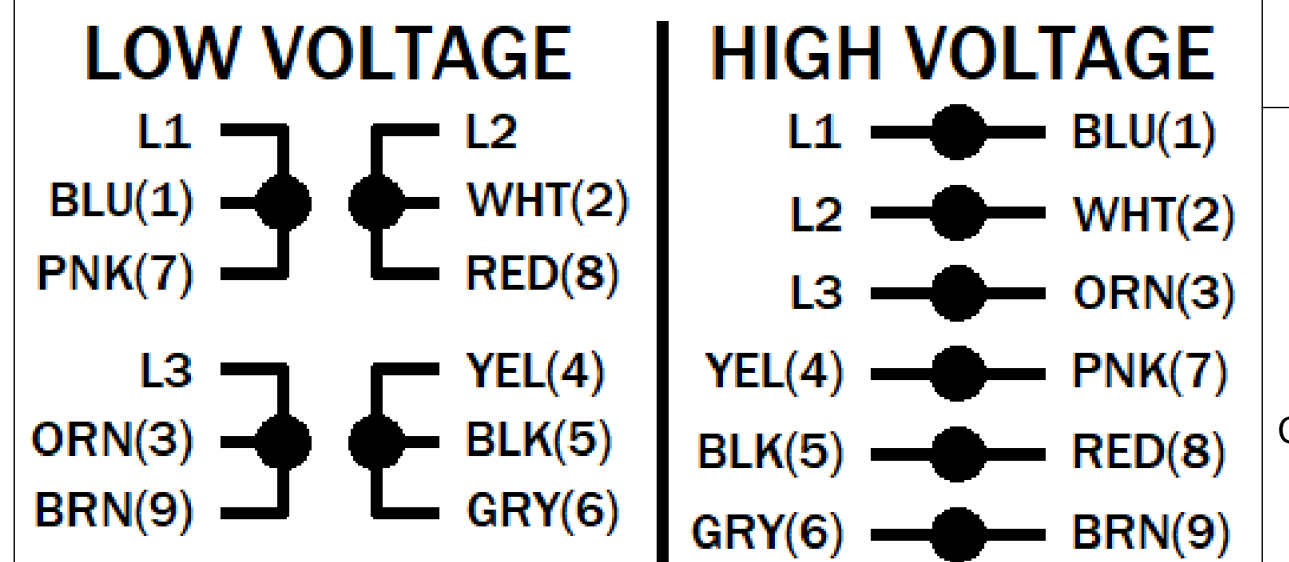
UNLESS OTHERWISE SPECIFIED DIMENSIONS WITHOUT TOLERANCES ARE REFERENCE ONLY

NOTES

LEADS

TERMINAL BLOCK PLUS GROUND

EXTERNAL CONNECTIONS



MOTOR DATA

TYPE		POLY - INVERTER DUTY		SHAFT MATERIAL		304 S.S. EXTENSION		CUSTOMER NAME		WEG HYDRODUTY	
HZ		60		HZ		50		CUSTOMER PART NUMBER		00152ET3EHD56C	
VOLTS		230/460		VOLTS		190/380		VIEWING LEAD END		MOTOR ROTATION REV	
HP[kW]		1.0 [-]		Hp[kW]		0.75 [0.560]		ASSEMBLY ROTATION		REV	
RPM		1150		RPM		950		ASSEMBLY VOLTAGE		HIGH	
F.L. AMPS		3.57/1.78		F.L. AMPS		3.49/1.75		THERMAL PROTECTION TYPE		NONE	
S.F. AMPS		4.0/2.0		S.F. AMPS		-		MOUNTING POSITION		ALL POSITIONS	
TIME RATE		CONT		MAX AMB		40		WINDING AND TEST SPEC		-	
KVA CODE		K		INS CLASS		F		DRAWN: AZAHM		09/16/24	

ECN	REV	CHANGE DESCRIPTION	DATE/INITIALS
-	03	UPDATE CONNECTION DIAGRAM AND EFFICIENCY VALUES. ADD KW VALUE AND CATALOG NUMBER.	07/31/2025 ZM
SIZE		DWG NO.	
D		10012467543	
SCALE: 7:8		DO NOT SCALE DRAWING	
SHEET 1 OF 1			

10012467543

