

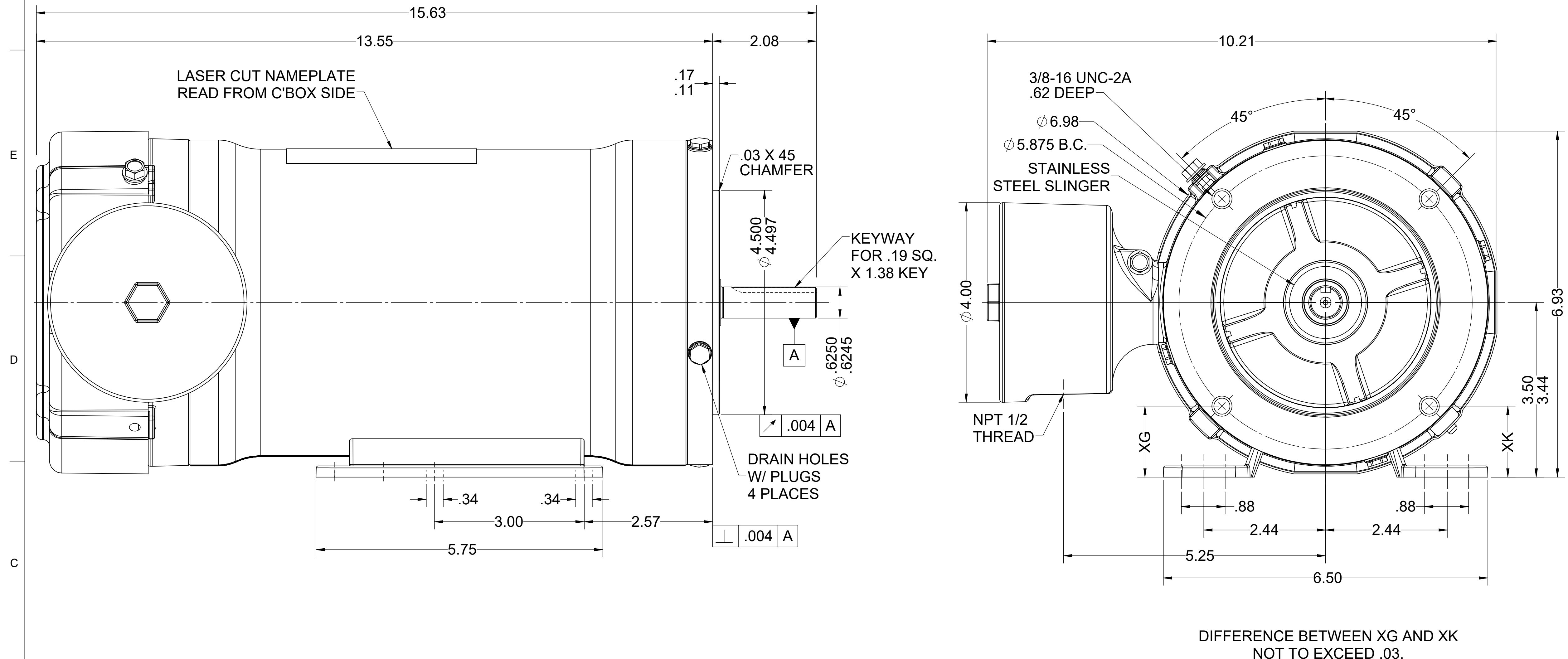
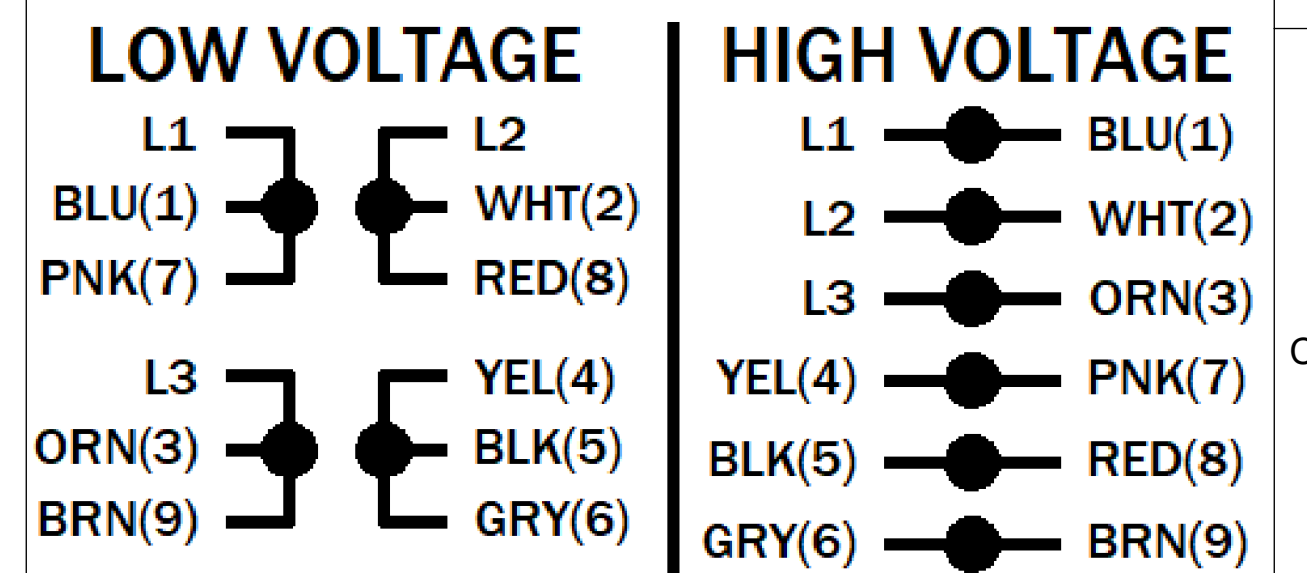
UNLESS OTHERWISE SPECIFIED DIMENSIONS WITHOUT TOLERANCES ARE REFERENCE ONLY

NOTES

LEADS

TERMINAL BLOCK PLUS GROUND

EXTERNAL CONNECTIONS



MOTOR DATA

<b>TYPE</b> POLY - INVERTER DUTY		<b>SHAFT MATERIAL</b> 304 S.S. EXTENSION		<b>CUSTOMER NAME</b> WEG HYDRODUTY	
<b>HZ</b> 60	<b>HZ</b> 50	<b>FRAME</b> 56C	<b>PHASE</b> 3	<b>CUSTOMER PART NUMBER</b> .7509ET3EHD56C	
<b>VOLTS</b> 230/460	<b>VOLTS</b> 190/380	<b>ENCLOSURE</b> TEFC	<b>PAINT</b> NONE	<b>VIEWING LEAD END</b>	<b>MOTOR ROTATION</b> REV
<b>HP[kW]</b> 0.75 [ ]	<b>SF</b> 1.15	<b>HP[kW]</b> 0.5 [0.373]	<b>SF</b> 1.0	<b>ENVIRONMENT</b> WASHDOWN	<b>BEARINGS</b> BALL
<b>RPM</b> 860	<b>RPM</b> 720	<b>I.P.CODE</b> IP69K	<b>END CAP</b> N/R	<b>ASSEMBLY VOLTAGE</b> HIGH	
<b>F.L. AMPS</b> 4.7/2.35	<b>F.L. AMPS</b> 4.35/2.18	<b>NEMA NOM. EFF.</b> -%	<b>IE2</b> 56.1%	<b>THERMAL PROTECTION TYPE</b> NONE	
<b>S.F. AMPS</b> 4.8/2.4	<b>S.F. AMPS</b> -			<b>MOUNTING POSITION</b> ALL POSITIONS	
<b>TIME RATE</b> CONT		<b>MAX AMB</b> 40		<b>WINDING AND TEST SPEC</b> 277921	
<b>KVA CODE</b> N		<b>INS CLASS</b> F		<b>DRAWN:</b> DMILOSTAN 09/13/24	

<b>ECN</b>	<b>REV</b> 02	<b>CHANGE DESCRIPTION</b>	<b>DATE/INITIALS</b> 01/06/2026 ZM
		ADDED CATALOG NUMBER, EFFICIENCY VALUES, KW, IE AND UPDATED CONNECTION DIAGRAM. ASSEMBLY ROTATION WAS REV AND ASSEMBLY VOLTAGE WAS FIXED.	
THE INFORMATION DISCLOSED HEREIN INCLUDES PROPRIETARY RIGHTS OF WEG. ANY REPRODUCTION OR TRANSFERRAL OF INFORMATION FROM THIS DOCUMENT IS FORBIDDEN WITHOUT PRIOR CONSENT.			
<b>SIZE</b> D	<b>DWG NO.</b> 10012467574		
<b>SCALE:</b> 5:6	DO NOT SCALE DRAWING	SHEET 1 OF 2	

10012467574